



GPS Tracker Data Logger

Trust in Confidence!

PRINTED MANUAL

GPS Tracker Data Logger

© 1999-2016 AGG Software

All rights reserved. No parts of this work may be reproduced in any form or by any means - graphic, electronic, or mechanical, including photocopying, recording, taping, or information storage and retrieval systems - without the written permission of the publisher.

Products that are referred to in this document may be either trademarks and/or registered trademarks of the respective owners. The publisher and the author make no claim to these trademarks.

While every precaution has been taken in the preparation of this document, the publisher and the author assume no responsibility for errors or omissions, or for damages resulting from the use of information contained in this document or from the use of programs and source code that may accompany it. In no event shall the publisher and the author be liable for any loss of profit or any other commercial damage caused or alleged to have been caused directly or indirectly by this document.

Printed: 29.11.2016

Publisher

AGG Software

Production

© 1999-2016 AGG Software

<http://www.aggsoft.com>

Table of Contents

Part 1 Introduction	1
1 About GPS Tracker Data Logger	1
2 Glossary	2
Part 2 License, Registration and technical support	4
1 License	4
2 Limitations	5
3 How to register	6
4 Support	6
Part 3 Installation	6
1 System requirements	6
2 Installation process	7
Part 4 Program use	7
1 Getting started	7
2 Introduction	9
3 Data flow diagram	10
4 Work complete	11
5 Useful advices	11
6 Configuration	12
Serial port	12
Network connection	12
TCP/IP settings.....	12
SMS	19
Configuring the SMS data source.....	19
Additional parameters	23
Data view change.....	23
Date/time configuration.....	24
Name and security	25
Log files	27
Log rotation.....	27
Log file access.....	29
Log deletion.....	30
Modules	31
Introduction & setup.....	31
OPC server.....	35
7 Program options	38
Window view	38
Date/time stamp view	40
Protocol and errors handling	41

Service mode on Windows 2000+	42
Configuration	42
Windows Vista+ notes	46
Restart & Security	47
Part 5 Serial communications overview	0
Part 6 Having problems?	48
1 Program doesn't run or work	48
2 FAQ	49

1 Introduction

1.1 About GPS Tracker Data Logger

Devices that use GPS to locate an object and a GSM channel to send data to the user have become widely used lately. With GPS trackers, you can create a vehicle tracking system that allows you to track the entire route of a car or another vehicle. Besides information about the location, a GPS tracker can use additional sensors to send data about fuel consumption, traveled distance, velocity and car alarm.

It works in the following way: the GPS tracking unit uses a GPS or GLONASS receiver to determine its coordinates. The tracker reads data from sensors and generates a data packet containing all information about the vehicle. Then it uses the GSM transmitter or the GPRS data transfer channel to send the information packet to the server.

Our program GPS Tracker Data Logger acts as the server and allows you to collect data from an unlimited number of various GPS trackers simultaneously. The obtained data is processed, uniformed and written to a log file or a database. Also, the program has a set of interfaces so other applications can get data in real time.

Besides, GPS Tracker Data Logger can convert data into other formats (the formats of other trackers) and send them to other servers. It allows you to connect previously unsupported devices to existing systems or view data from heterogeneous GPS trackers with the help of integrated client software.

What problems can be solved with GPS Tracker Data Logger?

The advantages of using GPS vehicle tracking systems are undeniable as they allow you to considerably reduce your company's expenses due to reduced expenditure on deviations from the route and prevented personal use of company vehicles.

Our program allows you to reduce the amount of client and server software being used thanks to the possibility to receive and process data from various trackers.

Key features:

- Various types of GPS trackers. Receiving, processing and exporting data from a lot of various GPS trackers at the same time.
- Universality. Receiving and processing binary and ASCII data packets.
- Receipt confirmation. GPS Tracker Data Logger can send data receipt confirmation packets to the GPS tracker.
- Advanced log file configuration. Logging received data to a file without any modification. A wide range of formatting log files (by time, date, etc.).
- Conversion. It is possible to convert data from all trackers to one format and retransmit them to another server (on request).
- Export to databases. Exporting data in real time to any ODBC-compatible database (MS SQL, MySQL, Oracle, MS Access, Interbase, Firebird and others).
- Integration. Plug-ins for writing to databases can work with tables of any structure. For special purposes, it is possible to write custom SQL queries, for example, for writing data to with the help of stored procedures.
- Fault-tolerant export to a database. For an additional fee, you can purchase the plug-in for exporting data to MS SQL, MySQL, Oracle, Interbase, Firebird that directly connects to the necessary database without additional drivers and allows you to save data if the database is

temporarily unavailable.

- Interfaces for receiving data. GPS Tracker Data Logger can work as a DDE or OPC server and pass all received data to other applications in real time.
- Data filter. The set of filtering plug-ins allows you not to write unnecessary data to the database or the log file. It is possible to specify complex conditions for filters with the help of scripting languages.
- Data modification. Additional plug-ins allow you to use formulas to calculate, correct and modify data before it is written to a database.
- Windows service mode. GPS Tracker Data Logger can also run as a service under Windows 2000 and higher. It allows the program to receive and process data in the background mode right after the operating system is started and before the user logs in. The program keeps running after the user logs off.
- Simple and intuitive interface. Neither programming nor special knowledge is required for the initial configuration of the program.
- Supporting various operating systems. It runs under all versions starting from Windows 2000, including 32 and 64-bit systems..
- It is very easy to use! The configuration process is completely visual and has full context help. You can completely customize the application.

1.2 Glossary

ASCII - An acronym for American Standard Code for Information Interchange. ASCII files are plain, unformatted text files that are understood by virtually any computer. Windows Notepad and virtually any word processor can read and create ASCII files. ASCII files usually have the extension .TXT (e.g., README.TXT).

Binary File - A file that contains data or program instructions written in ASCII and extended ASCII characters.

Bit - Binary digit in the binary numbering system. Its value can be 0 or 1. In an 8-bit character scheme, it takes 8 bits to make a byte (character) of data.

Bytes - A collection of eight bits that represent a character, letter or punctuation mark.

Cable - Transmission medium of copper wire or optical fiber wrapped in a protective cover.

Client/Server - A networking system in which one or more file servers (Server) provide services; such as network management, application and centralized data storage for workstations (Clients).

COM port - Short for a serial communication port. Most serial communication software communicate with a computer through a communication port, and most IBM and IBM-compatible computers support up to four serial ports COM1, COM2, COM3 and COM4. Additional ports can be added by adding additional hardware.

Data bits - A group of bits (1's and 0's) that represent a single character or byte. Typically, there are seven or eight data bits. During an asynchronous communication (e.g., BitCom connecting to CompuServe), each side must agree on the number of data bits. Data bits are preceded by a start bit and followed by an optional parity bit and one or more stop bits.

DNS (Domain Name System) - A DNS server lets you locate computers on a network or the

Internet (TCP/IP network) by domain name. The DNS server maintains a database of domain names (host names) and their corresponding IP addresses. PC aggssoft's IP address, 198.63.211.24, corresponds to the DNS name www.aggsoft.com.

Flow control - A method of controlling the amount of data that two devices exchange. In data communications, flow control prevents one modem from "flooding" the other with data. If data comes in faster than it can be processed, the receiving side stores the data in a buffer. When the buffer is nearly full, the receiving side signals the sending side to stop until the buffer has space again. Between hardware (such as your modem and your computer), hardware flow control is used; between modems, software flow control is used.

Handshaking - Is the way in which the data flow between computers/hardware is regulated and controlled. Two distinct kinds of handshaking are described: Software Handshaking and Hardware Handshaking. An important distinction between the kinds of signals of the interface is between data signals and control signals. Data signals are simply the pins which actually transmit and receive the characters, while control signals are everything else.

Internet - A global network of networks used to exchange information using the TCP/IP protocol. It allows for electronic mail and the accessing and retrieval of information from remote sources.

IP, Internet Protocol - The Internet Protocol, usually referred to as the TCP/IP protocol stack, allows computers residing on different networks to connect across gateways on wide-area networks. Each node on an IP network is assigned an IP address, typically expressed as 'xx.xx.xx.xx'.

IP address (Internet Protocol address) - The address of a computer attached to a TCP/IP network. Every client and server station must have a unique IP address. Client workstations have either a permanent address or one that is dynamically assigned to them each dial-up session. IP addresses are written as four sets of numbers separated by periods; for example, 198.63.211.24.

LAN (Local Area Network) - A network connecting computers in a relatively small area such as a building.

NIC, Network Interface Card - A card containing the circuitry necessary to connect a computer to a particular network media. Typically, the NIC plugs into the computer's accessory bus, (PCI, USB, etc.) and provides a network connection such as 10baseFL (fiber ethernet), thin-net, AUI, etc.

PC - abbreviation for a Personal Computer.

Parity - In data communications, parity is a simple procedure of checking the integrity of transmitted data. The most common type of parity is Even, in which the number of 1's in a byte of data add up to an even number, and None, in which a parity bit is not added.

Ports - A connection point for a cable.

Protocol - A formal description of a set of rules and conventions that govern how devices on a network exchange information.

RS232, RS423, RS422 AND RS485 - The Electronics Industry Association (EIA) has produced standards for RS232, RS423, RS422, and RS485 that deal with data communications. EIA standards were previously marked with the prefix "RS" to indicate the recommended standard. Presently, the standards are now generally indicated as "EIA" standards to identify the standards.

organization.

Electronic data communications will generally fall into two broad categories: single-ended and differential. RS232 (single-ended) was introduced in 1962. RS232 has remained widely used, especially with CNC control builders. The specification allows for data transmission from one transmitter to one receiver at relatively slow data rates (up to 20K bits/second) and short distances (up to 50' @ the maximum data rate). This 50' limitation can usually be exceeded to distances of 200' or more by using low capacitance cable and keeping the data rates down to 9600 baud and lower.

RTS/CTS Hardware handshaking - uses additional wires to tell a sending device when to stop or start sending data. DTR and RTS refer to these Hardware handshaking lines. you can select whether you need to use DTR or RTS individually, or use both lines for hardware handshaking. See also Xon/ Xoff.

TCP/IP, Transport Control Protocol / Internet Protocol - TCP and IP are communications protocols, that is, structured languages in which data is communicated between one process and another, and between one network and another. TCP/IP is implemented in a multi-level layered structure.

TCP/IP is the 'glue' that that ties together the many heterogeneous networks that make up the Internet.

Stop bits - In data communication, one or two bits used to mark the end of a byte (or character). At least one stop bit is always sent.

2 License, Registration and technical support

2.1 License

Copyright © 1999-2016 AGG Software.
All Rights Reserved

SOFTWARE LICENSE

Trial Limited Version

The trial limited version of this software may be used for evaluation purposes at the user's own risk for a trial period. At the end of the trial period, the user must either purchase a license to continue using the software, or remove it from his/her system.

The trial limited version may be freely distributed, provided the distribution package is not modified. No person or company may charge a fee for the distribution of GPS Tracker Data Logger without written permission from the copyright holder.

Licensed Version

On payment of the appropriate license fee, the user is granted a non-exclusive license to use GPS

Tracker Data Logger on one computer (i.e. a single CPU), for any legal purpose, at a time. The registered software may not be rented or leased, but may be permanently transferred, if the person receiving it agrees to terms of this license. If the software is an update, the transfer must include the update and all previous versions.

Registered customer are entitled to free updates during one year from the date of purchase. It means that during one year you can download and install the latest registered versions of GPS Tracker Data Logger from our site. If you don't want to purchase an updates, you can use the program forever; it will never expire, but you won't be able to use the latest version. If you purchased the software more than one year ago, you are no longer entitled to free upgrade and technical support; however, you can purchase an updates to the latest version at a special, greatly discounted price, and this updates will allow you to have free updates and technical support for another year. The type of update license must match the type of your existing license.

Whilst every care has been taken in the construction and testing of this software, it is supplied subject to the condition that the user undertakes to evaluate the suitability of the control for his/her purposes. AGG Software makes no representation of the software's suitability for any purpose, and the user agrees that AGG Software has no responsibility for any loss or damage occasioned by the use of this software.

TO THE MAXIMUM EXTENT PERMITTED BY APPLICABLE LAW, THE SOFTWARE AND DOCUMENTATION ARE PROVIDED "AS IS" AND AGG SOFTWARE DISCLAIMS ALL OTHER WARRANTIES AND CONDITIONS, EITHER EXPRESS OR IMPLIED, INCLUDING, BUT NOT LIMITED TO, IMPLIED WARRANTIES OF MERCHANTABILITY, FITNESS FOR A PARTICULAR PURPOSE, CONFORMANCE WITH DESCRIPTION, TITLE AND NON-INFRINGEMENT OF THIRD PARTY RIGHTS.

TO THE MAXIMUM EXTENT PERMITTED BY APPLICABLE LAW, IN NO EVENT SHALL AGG SOFTWARE BE LIABLE FOR ANY INDIRECT, INCIDENTAL, CONSEQUENTIAL, SPECIAL OR EXEMPLARY DAMAGES OR LOST PROFITS WHATSOEVER (INCLUDING, WITHOUT LIMITATION, DAMAGES FOR LOSS OF BUSINESS PROFITS, BUSINESS INTERRUPTION, LOSS OF BUSINESS INFORMATION, OR ANY OTHER PECUNIARY LOSS) ARISING OUT OF THE USE OR INABILITY TO USE THE SOFTWARE PRODUCT, EVEN IF AGG SOFTWARE HAS BEEN ADVISED OF THE POSSIBILITY OF SUCH DAMAGES. IN ANY CASE, AGG SOFTWARE'S CUMULATIVE AND ENTIRE LIABILITY TO YOU OR ANY OTHER PARTY FOR ANY LOSS OR DAMAGES RESULTING FROM ANY CLAIMS, DEMANDS OR ACTIONS ARISING OUT OF OR RELATING TO THIS AGREEMENT SHALL NOT EXCEED THE PURCHASE PRICE PAID FOR THIS LICENSE.

Should any term of these terms and conditions be declared void or unenforceable by any court of competent jurisdiction, such declaration shall have no effect on the remaining terms hereof.

If you do not agree to these conditions you should not install this software.

2.2 Limitations

Program is distributed on shareware terms. This means limited and unavailable secondary program possibilities, which become valuable or available after program registration. To register the program read [here](#).

In trial version of our program are the following limits:

- Trial period is limited by 21 days. After that time program won't work until it is registered.
- Continuous program work time is limited. After set period a message will be displayed and program stops its work;
- All data export modules can handle first 100 records only;

2.3 How to register

The program is distributed on shareware terms. This signifies limited or unavailable many features of the program, getting of full value or available after program registration.

If you'd like to be a registered user, to get information about the release of new versions, to use technical support and, at last, to get access to disabled functions of the program, register your copy. For registration, please, read [license agreement](#) [4].

If you want to buy a program through the Internet visit the [registration page](#) of our site. On this page you can get the newest information about the registration process, and also find an order link. After you've have the form of order registration. Enter your personal information and choose the most convenient payment method for you. Further, you'll get notification and follow the notes in it.

More information about services, registration documents, payment means you can get on our [registration page](#) of our site.

2.4 Support

Technical questions	support@aggsoft.com
Common questions	info@aggsoft.com
Sales questions	sales@aggsoft.com

3 Installation

3.1 System requirements

Windows 2000 Professional - Windowsa 8.1, including x64 and x86 OS, Workstation and Server OS.

3.2 Installation process

If any beta-version was installed on your computer, remove it.

Quit of the working GPS Tracker Data Logger on installation time.

Run an installation file.

By default, GPS Tracker Data Logger will be installed to the directory "/Programs Files/GPS Tracker Data Logger" of your system disk, but you can change this path.

In the standard distributive of GPS Tracker Data Logger are no additional modules files, which you can download from our [site](#).

4 Program use

4.1 Getting started

After you have successfully installed GPS Tracker Data Logger, use the following simple steps to configure and run it.

Open the GPS Tracker Data Logger program from the Start Menu.

At program run you get into the main program window (fig. 1.1.1), main elements of which are the main menu, the data window, the program messages list and the status bar. In the data window will be viewed formatted data processing. In the messages list are logged information, warning and error messages. The status bar shows current state of the selected data source, interface error messages and a number of bytes processed. Through the main menu, placed above the data window, you can get access to [program settings](#)⁹ ("Options/Program settings...") and from the menu "File" (fig. 1.1.2) can open an current log-file or clean the data window.

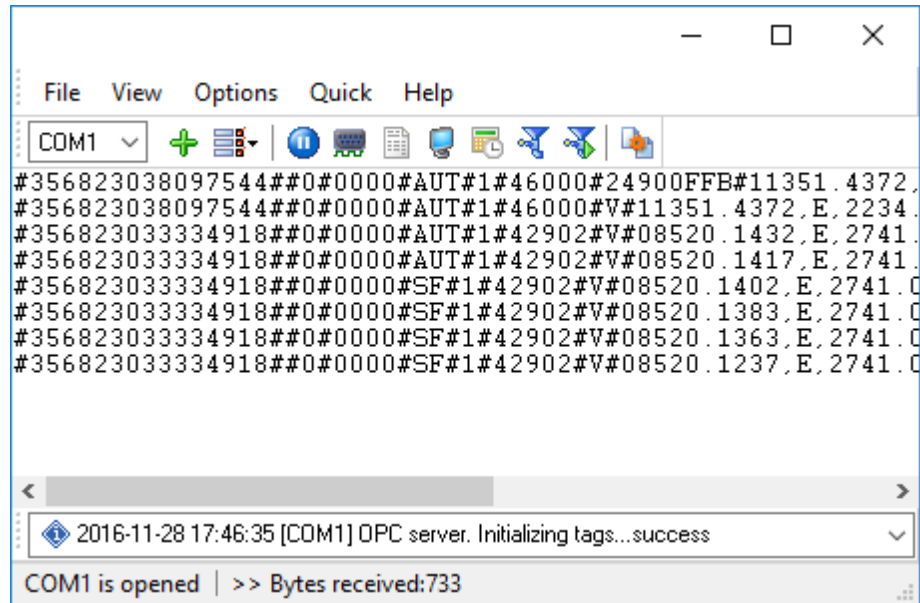


Fig. 1.1.1 Main program window

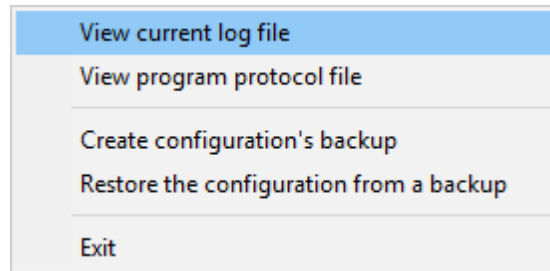


Fig. 1.1.2. "File" menu item

By default (after installation), the program has not any data sources configured. If the list of data sources on the toolbar is empty, then the program will ask you to add new configuration. Otherwise, the program will fill in the list of data sources and try to start logging of data sources configured. Yes, of course, all your settings are being saved while exiting from the program and loaded while the program start.

Set-Up is as Easy as 1-2-3

Step 1. Configure one or more data sources.

Click the "Add configuration" button on the toolbar with big green plus and choose [communication parameters](#)^[12] for your device. The tab of the "Configuration options" dialog lets you configure your settings.

Step 2. Configure log file.

Select the "Log file" header in the configuration dialog window and enable logging for a necessary data direction.

Step 3. Define how you want the your data to be filtered and exported [parsed and translated](#)^[31].

The "Plug-in" button on the toolbar in the main window or "Modules" tab in the dialog window lets you specify how to parse, filter and format your data to the fit the exact format required by your application. It also lets you pre-define automatic output strings to be sent to an external device.

Now, the program process and exports data from one or multiple data sources.

4.2 Introduction

Program can work with any kind of network interface cards (NIC). Before configuring our software, the following conditions should be executed:

- If your PC has more than one network interface card (NIC) then GPS Tracker Data Logger will display a list of all the IP addresses for each NIC installed in your system so that you can select the IP Address that you want to use. In order for GPS Tracker Data Logger to act as a server, the PC that it is running on must have at least one network interface card with an IP address assigned to it;
- If GPS Tracker Data Logger will work as a server and your PC receives the IP address dynamically from a DHCP server, then you should ask your network administrator to assign a static IP address to your PC.

How to configure port parameters, you can read in the next chapter "[IP settings](#)^[12]".

GPS Tracker Data Logger can save data to a log file(s) without any changes (i.e. create raw binary log files) or write to log files depending on the parser module selected. In the first case you can view the log file with any hex editor and use this data for further analysis and remaking. In the second case you can view data with any text editor. You can find more information about log files in the "[Log rotation](#)^[27]" chapter.

You can watch the data in the data window ([fig. 1.1.1](#)^[7]). The data view is fully customizable. You can watch data in decimal, hexadecimal or your own format. How to customize data view you can read in the "[Data view](#)^[23]" chapter and how to customize program view you can read in the "[Window view](#)^[38]" chapter.

The data can be exported or transferred to one or more targets. Most simple way is to configure the log file rotation. But it is small part of all features of GPS Tracker Data Logger. GPS Tracker Data Logger has many [additional modules](#)^[31] (so-called plug-ins), that are appreciably extending possibilities of the logging software. You can download and install any module supported. Most modules are free of charge for our customers. How to install and configure modules you can read in the "[Modules](#)^[31]" chapter.

The program and their plug-ins generates many messages and writes they to the list in the main window ([fig. 1.1.1](#)^[7]) and a protocol file, that you can use for administration of the software. You can configure types of system messages. More information about it you can read in the "[Protocol and errors handling](#)^[41]" chapter.

4.3 Data flow diagram

This diagram may help you to understand the flow of data within our software and a place of each module. All modules are described in following chapters.

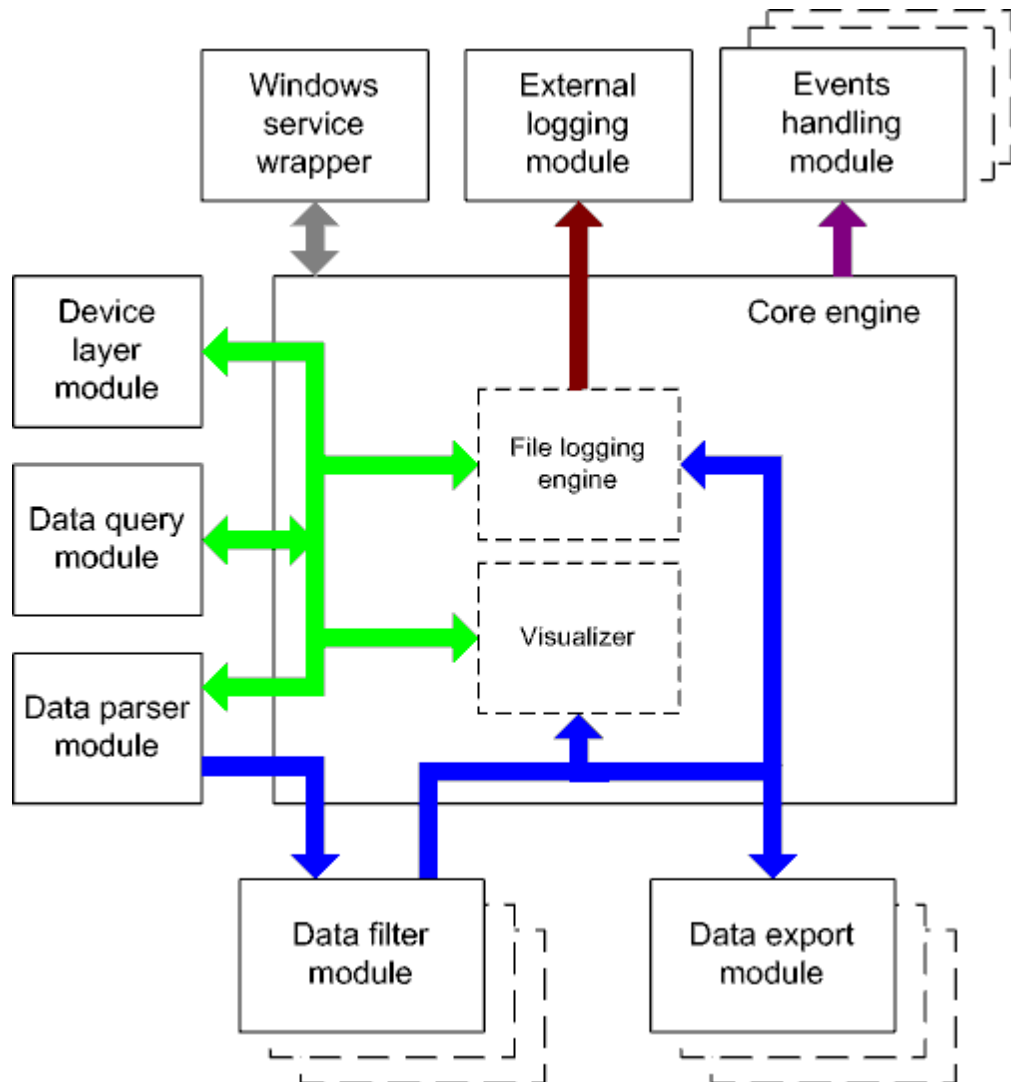


Fig. 1.2.1 Data flow diagram

History:

■ - Binary flow of data (RAW, unformatted data).

■ - Parsed data (formatted data). The data flow was been separated to data packets and variables. Each data packet can be interpreted as a row, and each variable can be interpreted as a column.

Wires with other colors mark other relations with unstructured data flow.

4.4 Work complete

After program work stop all program settings will be saved in Windows registry. Opened for reading/writing data sources will be automatically closed and will be available for other applications.

4.5 Useful advices

1. Look through hint helps on all window elements - this will help you to get a picture of this element's function.
2. You can change all program settings without restarting the program. To transfer settings to another computer you can do the following:
 1. Create a configuration backup from the "File" menu and restore it using the same menu.
 2. Or export the registry node with all program settings. Start regedit.exe and export the following registry node:

on Windows x64

HKEY_LOCAL_MACHINE\SOFTWARE\Wow6432Node\AGG Software\GPS Tracker Data
Logger

on Windows x32

HKEY_LOCAL_MACHINE\SOFTWARE\AGG Software\GPS Tracker Data Logger

3. On another computer import settings to the Windows registry.

Many main window elements have "hot" keys for quick access to its functions.

- Ctrl+S - analogues to click on "Start/Pause" button on toolbar.
- Ctrl+C - analogues to click on "Clear" button on toolbar.
- Ctrl+P - call options window with configuration settings.
- Ctrl+L - call options window with log file settings.
- With Ctrl+W hot key You can configure window view.
- Ctrl+R - show window with program's restart settings.
- Ctrl+E - Windows NT/2000/XP service settings is available here.
- Ctrl+M - here you can configure queries, parsers and other modules.

4. You can look at the summary statistic that contains summary about sent and received data, created files etc (View - Statistics)
5. You can save program settings to an INI file. It may help to install and use several copies of the program. You can make your choice from the "Options" menu.
6. The program window can display only last 10 message. The full program log file (if activated) you can open using the "File - View program protocol file" menu item.

4.6 Configuration

4.6.2 Network connection

4.6.2 Network connection

4.6.2.1 TCP/IP settings

UDP vs. TCP

The most commonly used network protocols today are TCP (Transport Control Protocol) and UDP (User Datagram Protocol). TCP is a proven and reliable protocol, and probably the most widely implemented protocol in use on IP networks today. However, TCP has a lot of overhead and payload issues, and can sometimes be 'too-reliable' or robust for many applications. In fact, when used as transport, for many serial based applications TCP can actually hinder reliable communications. In contrast, UDP is a much simpler protocol, and is being used more frequently today - particularly in areas where bandwidth or throughput is constrained. An example is the predominant use of UDP for transport of wireless data applications.

UDP is first a connectionless protocol. Like TCP, UDP runs on top of IP networks. But unlike TCP, UDP does little to help with transport delivery or error recovery. Instead it offers a direct way to send and receive packets, letting the software application manage things like error recovery and data retransmission. Once primarily used for broadcasting small messages, UDP is now used for everything from browsers to Instant Messaging, Video, and Voice over IP applications.

While a powerful tool, the downside to using UDP is that there is not 'connection' report to know that you have end-to-end connectivity. This often makes detecting whether or not a packet is 'making it' from one place to another quite a hassle.

Client vs Server

GPS Tracker Data Logger can be configured to log data from as many ports that you like simultaneously on a single PC. The program uses a multi configurations. Each configuration may contain different settings for each TCP/IP port. Each configuration has a set of TCP/IP parameters that are described below.

Each port configuration (i.e. TCP/IP connection) in GPS Tracker Data Logger can act as:

1. **Client.** You will need to specify the remote host IP address and the port number for the TCP/IP server that you want to connect to. The IP address that you specify in GPS Tracker Data Logger when configuring it as a client may also be either a URL or the name of a computer located on your network. For example, if you want to connect to a computer named "Plant1", you can simply enter "Plant1" for the IP address instead of the actual IP address. If you are configuring GPS Tracker Data Logger as a client and your network is set up to assign IP addresses dynamically to each individual workstation, then you may need to use the name of the PC that you want to connect to instead of an actual IP address in order to guarantee a connection;
2. **Server.** In this mode you should specify the IP address of the local PC will be used and you only need to specify the port number that you would like to use. If your PC has more than one network interface card (NIC) then GPS Tracker Data Logger will display a list of all the IP addresses for each NIC installed in your system so that you can select the IP Address that you

want to use. In order for GPS Tracker Data Logger to act as a server, the PC that it is running on must have at least one network interface card with an IP address assigned to it. In Microsoft Windows, the TCP/IP protocol can be configured to automatically obtain an IP address from a host computer. This means that your PC may not have an IP address until it is connected to a network server or a host computer. You may need to contact your network administrator to assign an IP address to your PC if you wish to configure a TCP/IP server connection. This is done in the network settings for the TCP/IP protocol in your control panel.

After you enter the parameters that you would like to use, you must click the "OK" button to establish a connection between GPS Tracker Data Logger and the TCP/IP port. If the current port configuration is set up as a client, it will immediately try to establish a connection to the specified remote server. If the server is not available, GPS Tracker Data Logger will continually try to establish the connection until it is successful. If the port configuration is set up as a server, it will listen the specified port until a client establishes a connection to it.

If one or more port are configured already, then GPS Tracker Data Logger is opening these ports and starting logging. If the port is opened successful, then the status bar in the main window displays a status of this port (fig. 1.1.1⁷). But, before you should configure port parameters that are described below.

You can create the new configuration by clicking the "Plus" button in the main window (fig. 1.1.1⁷) or through the "Options" menu. After you clicked the "Plus" button, the dialog window will be opened (fig. 2.2.2). The dialog window contains few sections with parameters. The "IP settings" section is described in this chapter.

To log data from more than one TCP/IP connection you would create and configure multiple port configurations. You can manage the configuration created with a drop down menu near the "Plus" button (fig. 2.2.1).

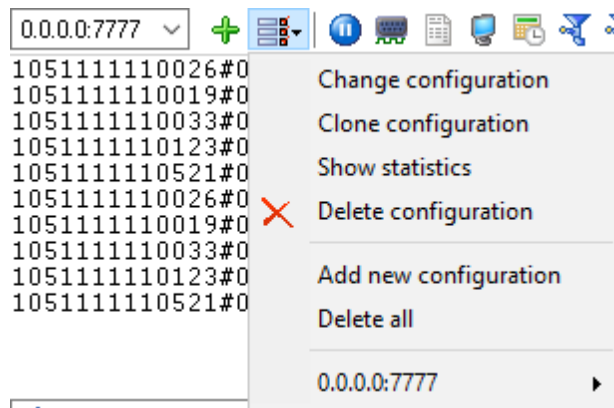


Fig. 2.2.1 Access to the port configuration

The "IP settings" tab contains indispensable settings of any TCP/IP port: IP address and port.

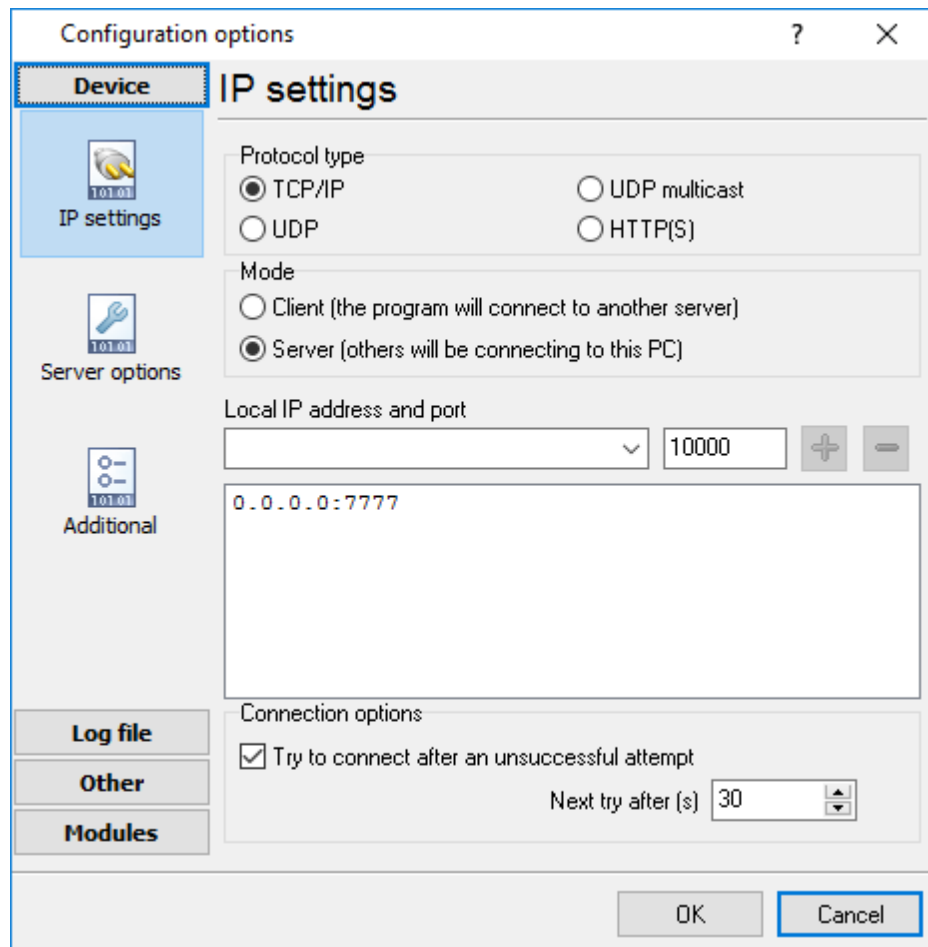


Fig. 2.2.2 TCP/IP parameters

Port

In addition to IP address, you should specify how to connect to a remote machine. Our software can be thought of as a trunk line with thousands of individual lines (the ports) which are used to connect machines. Some ports are considered well-known ports. For example, the port typically used for network mail systems (SMTP) is port 25, the telnet port is port 23, the network news server port (NNTP) is typically port 119, and so on. To see a list of well-known ports, inspect the SERVICES file in the Windows directory (for Windows NT it is in the WINNT\SYSTEM32\DRIVERS\ETC directory). The SERVICES file is a text file used by GPS Tracker Data Logger to perform port lookups (which return the service name for the specified port) and port name lookups (which return the port number for the specified service name). You can open this file in any text editor to see a list of port numbers and their corresponding service names. While these well-known ports are not set in stone, they are traditional and their use should be reserved for the service which they represent. When writing network applications, you should select a port number that is not likely to be duplicated by other applications on your network. In most cases you can choose a port number other than any of the well-known port numbers.

The IP address and port number are used in combination to create a socket. A socket is first created and then is used to establish connection between two computers. How the socket is used depends on whether the application is a client or a server. If an application is a server, it creates the socket, opens it, and then listens on that socket for computers trying to establish a connection. At

this point the server is in a polling loop listening and waiting for a possible connection. A client application, on the other hand, creates a socket using the IP address of a particular server and the port number that the server is known to be listening on. The client then uses the socket to attempt to connect to the server. When the server hears the connection attempt, it wakes up and decides whether or not to accept the connection. Usually this is done by examining the IP address of the client and comparing it to a list of known IP addresses (some servers don't discriminate and accept all connections). If the connection is accepted, the client and server begin communicating and data is transmitted.

Connection options

If the remote server (in the client mode) or local network interface (in the server mode) is not available and the "**Try to connect after unsuccessful attempt**" option is True, then GPS Tracker Data Logger will continually try to establish the connection until it is successful. The program will try to establish the connection each N seconds that you can specify in the "**Next try after XXX seconds**" field.

Allowed IP addresses

This option is active in the server mode and allows you to enter one or more IP addresses that have access to the server. IP addresses that are not listed in this field will be refused by the server. This option is very useful if you transfer your data over Internet connection or your server PC is connected to a big corporate network. You can specify multiple addresses - one per row. If you'll not specify any address here, then GPS Tracker Data Logger will accept connections from all IP addresses.

Firewall settings

After you install Microsoft Windows XP Service Pack 2 (SP2), our GPS Tracker Data Logger may not seem to work. Windows Firewall, enabled by default, blocks unsolicited access to your computer via the network and may be blocking the normal operation of the program. To provide increased security to Windows XP users, Windows Firewall blocks unsolicited connections to your computer. When Windows Firewall detects incoming network traffic that it does not recognize, a Security Alert dialog box appears. The security alert dialog box looks like this:

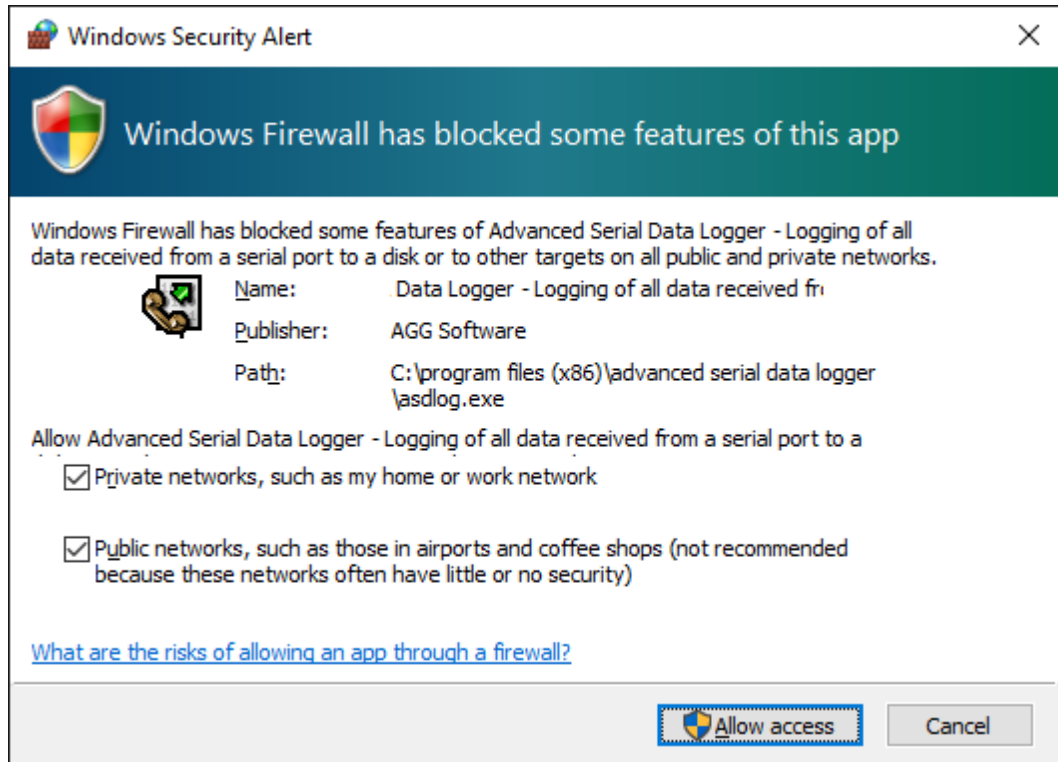


Fig. 2.2.3 Firewall alert

The dialog box includes the following buttons:

- Unblock this program;
- Keep Blocking this program;
- Keep blocking this program, but Ask Me Later.

In order for our program to function properly, you must unblock the program by clicking the Unblock button. Unblocking allows Windows XP SP2 to allow the program to continue to work by adding it as an exception to your Windows Firewall configuration. Exceptions are specific programs and processes that you allow to bypass the firewall. After you add a program as an exception, you no longer receive the security alert. If you choose to continue blocking the program certain functions will be disabled.

Note: If you are using another firewall software, then please, refer to a firewall manual for corresponding settings.

Limitations

The specific limit of connections is dependent on how much physical memory your server has, and how busy the connections are:

The Memory Factor: According to Microsoft, the WinNT and successor kernels allocate sockets out of the non-paged memory pool. (That is, memory that cannot be swapped to the page file by the virtual memory subsystem.) The size of this pool is necessarily fixed, and is dependent on the amount of physical memory in the system. On Intel x86 machines, the non-paged memory pool stops growing at 1/8 the size of physical memory, with a hard maximum of 128 megabytes for Windows NT 4.0, and 256 megabytes for Windows 2000. Thus for NT 4, the size of the non-paged

pool stops increasing once the machine has 1 GB of physical memory. On Win2K, you hit the wall at 2 GB.

The "Busy-ness" Factor: The amount of data associated with each socket varies depending on how that socket's used, but the minimum size is around 2 KB. Overlapped I/O buffers also eat into the non-paged pool, in blocks of 4 KB. (4 KB is the x86's memory management unit's page size.) Thus a simplistic application that's regularly sending and receiving on a socket will tie up at least 10 KB of non-pageable memory.

The Win32 event mechanism (e.g. `WaitForMultipleObjects()`) can only wait on 64 event objects at a time. Winsock 2 provides the `WSAEventSelect()` function which lets you use Win32's event mechanism to wait for events on sockets. Because it uses Win32's event mechanism, you can only wait for events on 64 sockets at a time. If you want to wait on more than 64 Winsock event objects at a time, you need to use multiple threads, each waiting on no more than 64 of the sockets.

If you have more than 64 connection at a time, then we recommend to create multiple configuration in our software (the green plus button). Each configuration will use different port number and will run in a different thread. This change will allow to decrease an influence of Windows limitations.

Additional parameters

The "Additional" tab contains additional settings of a TCP/IP or UDP connection (fig. 2.2.4).

Simple terminal emulation - the program realizes simple implementation of some terminal protocols. If this emulation is enabled then the program will process some special commands and character sequences.

Following options are effective only in the "TCP/IP server" mode:

Limit of simultaneous connections - you can define number of clients that can connect to the server at the same time. It allows to optimize a server load with large number of TCP clients.

Disconnect inactive clients after (s) - if a client is connected, but didn't send or receive any data within the specified time, then the connection with this client will be closed. If you will specify "-1" then the clients will not be disconnected.

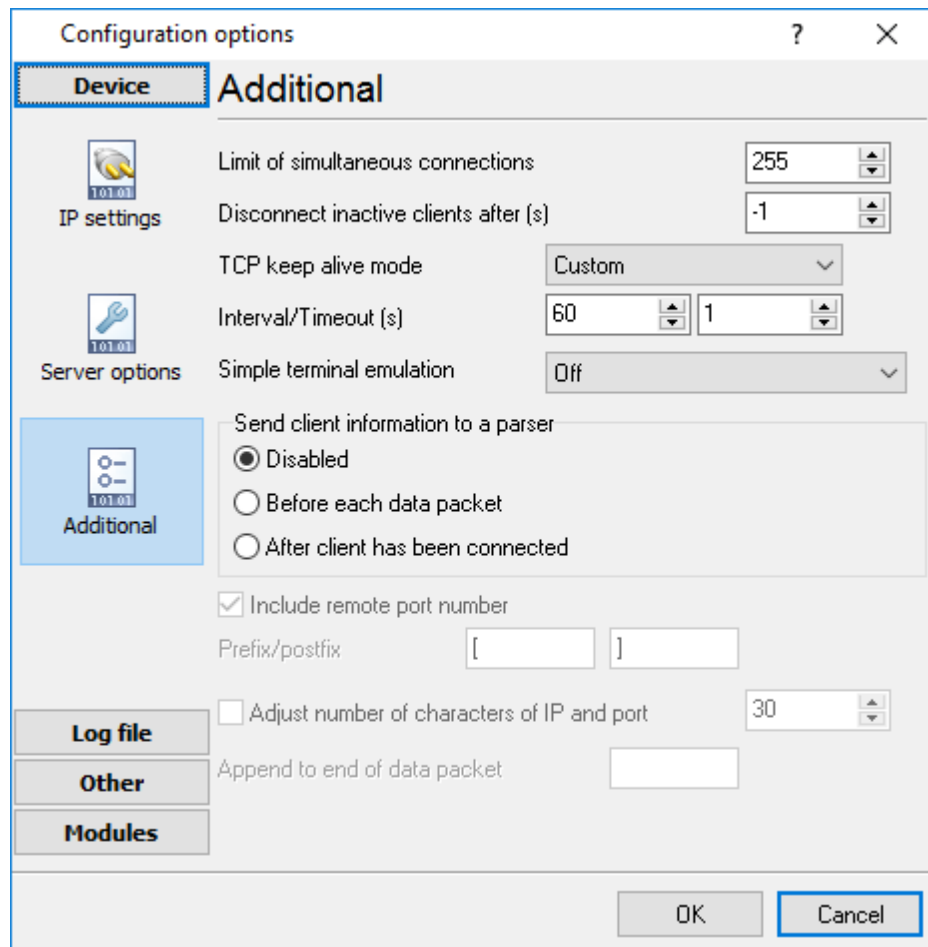


Fig. 2.2.4. Additional parameters

Following options are effective only in the TCP/IP server or client modes:

TCP keep alive mode

A TCP keep-alive packet is a short packet which is sent periodically by the OS to keep the connection alive. The connection stay alive because those packets and their replies generate small traffic on the connection when the application is idle.

Keep-alives can be used to verify that the computer at the remote end of a connection is still available.

It is simply an ACK with the sequence number set to one less than the current sequence number for the connection. A host receiving one of these ACKs responds with an ACK for the current sequence number.

TCP keep-alives can be sent once every KeepAliveTime (defaults to 7,200,000 milliseconds or two hours) if no other data or higher-level keep-alives have been carried over the TCP connection. If there is no response to a keep-alive, it is repeated once every KeepAliveInterval seconds. KeepAliveInterval defaults to 1 second. Some (buggy) routers may not handle keep-alive packets properly.

Our software supports three modes of keep alive (fig 2.2.4):

1. **Off** - the program doesn't use keep alive at all. You can disable keep alive if your network is very stable or your routers doesn't support it.

2. **System** - the program will use keep alive, but use system values of KeepAliveTime and KeepAliveInterval. These values are stored in the following registry branch:

```
[HKEY_LOCAL_MACHINE\System\CurrentControlSet\Services\Tcpip\Parameters]
KeepAliveTime (32-bit number) = milliseconds
KeepAliveInterval (32-bit number) = milliseconds
```

3. **Custom** - the program will use keep alive, but you can specify your values of KeepAliveTime and KeepAliveInterval, that are more applicable for your network and system. **Note:** in our software you should define these values in seconds.

Note: Some routers may not allow keep-alive TCP packets. In this case the "keep-alive" function will not work.

Following options are effective only in the server mode (TCP/IP or UDP):

Send client information to the a parser - if this option is activated then program will append a system header to a data packet about the remote client. It allows the parser to separate data packets from several clients that send data simultaneously.

4.6.3 SMS

4.6.3.1 Configuring the SMS data source

During the configuration of how to receive incoming text messages, GSM modem(s) must be connected directly to the server where the program is running. The following requirements should be observed when you connect a GSM modem:

1. The modem must support the list of AT commands for handling text messages. The text message receiving plug-in checks the modem for compatibility during the initialization. If the modem is not compatible, no text messages will be received.
2. If the modem is connected to the COM port, you should specify the correct data transfer parameters (speed, data bits, etc.) (fig. 2.9.1)
3. If the modem is connected via the Ethernet, USB, Bluetooth interface or some other interface, drivers that create or emulate the modem COM port must be installed for this modem. The speed value does not usually matter for these modems.

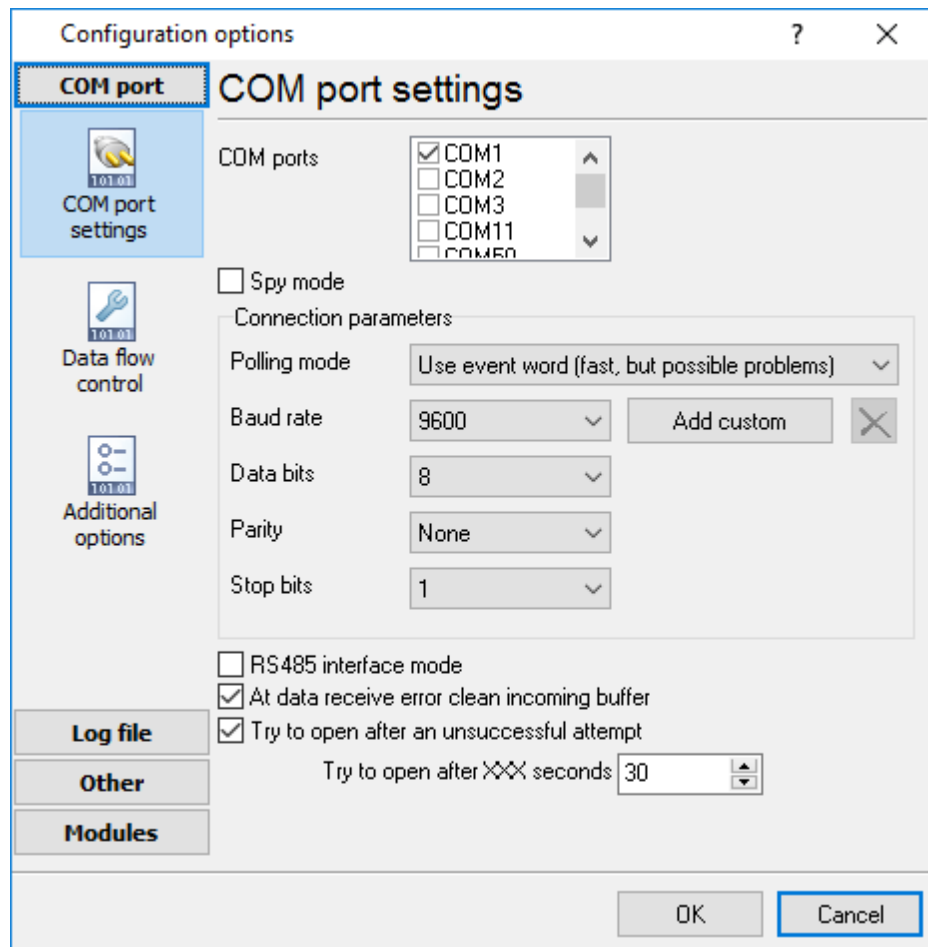


Fig. 2.9.1 Data transfer options

It is possible to configure advanced modem options on the "Advanced options" tab (fig. 2.9.2).

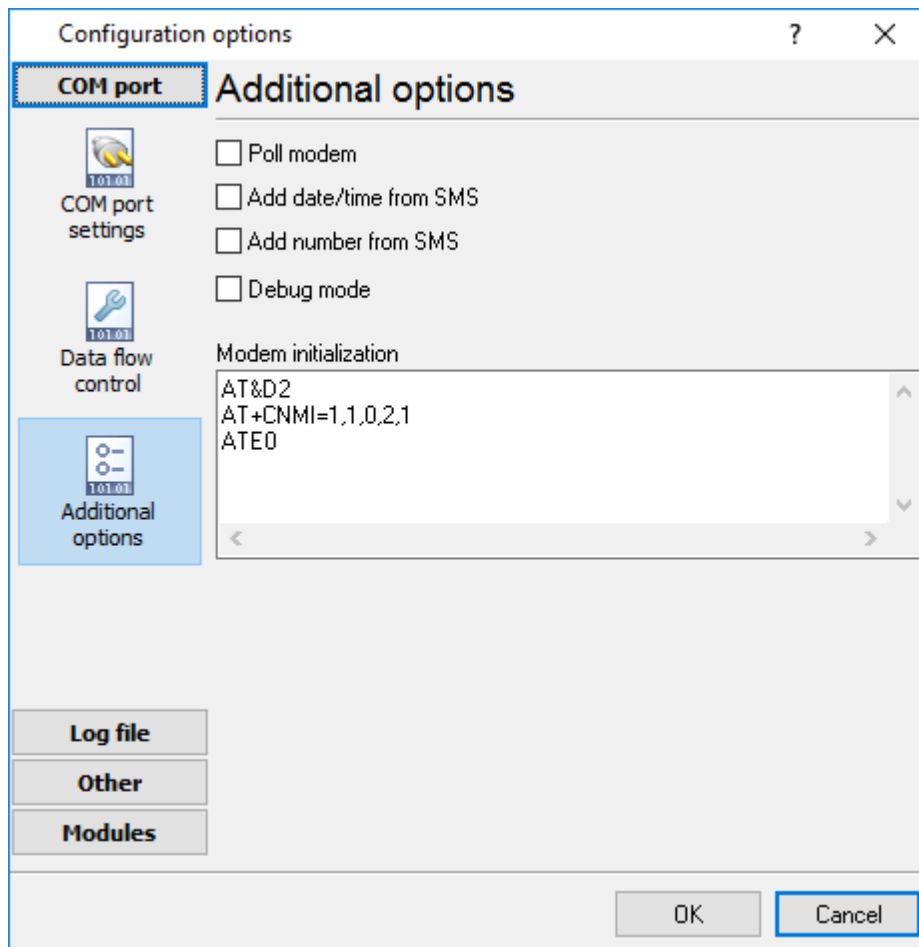


Fig. 2.9.2 Advanced options

Poll modem – if this option is enabled, the plug-in will query the modem every 3 seconds for new text messages. This mode is used if the GSM modem cannot notify the computer when a new text message is received.

Modem initialization – modem initialization string(s). It is a list of AT commands that are sent when a connection to the modem is being established. One command per line. For example:

```
AT&D2
AT+CNMI=1,1,0,2,1
ATE0
```

In this case, the modem is configured to send notifications to the computer when a new text message is received.

Note: different initialization commands can be used for different types of modems, for example:

```
Siemens: AT+CNMI=1,1,0,2,1
WaveCom: AT+CNMI=2,1,0,1,1
SonyEricsson: AT+CNMI=3,1,0,1,0
Motorola USB modem: AT+CNMI=3,1,0,0,0
```

This command affects the process of receiving messages and receipt reports, if it is specified incorrectly problems with receiving them may occur. That is why it is recommended to make sure that parameters of this command correspond to the documentation of your modem. It is also possible to use other commands to optimize the operation of modems.

How to configure modems

Below you can see the instructions how to preliminarily configure modems using Hyperterminal (the standard Windows program) or any other terminal software.

1. Connect the modem to the computer and wait till it is registered in the GSM network. Configure the modem port speed (as a rule, 9600 or 19200 bps), open the port.

2. Make sure the modem is active with the help of simple commands:

ATZ (modem reset),
ATI (manufacturer's identification),
ATE1 (echo on).

3. Configure the modem for the correct text message transfer, check the text message transfer mode using the command

AT+CMGF?

the response should be

+CMGF: 0,

which means that modem is in the SMS PDU mode necessary for the plug-in to run, otherwise switch the modem into this mode using the command

AT+CMGF=0

the response is OK.

4. Configure the modem to save incoming and outgoing text messages to the SIM card using the command

AT+CPMS?

the response is +CMPS: "SM",0,20, "SM",0,20, "SM",0,20.

If the response is different (for example: +CMPS: "ME",0,20, "SM",0,20, "ME",0,20), use the AT+CPMS="SM", "SM", "SM" command to enable the necessary configuration.

5. Save this configuration to the modem profile using the AT&W command.

6. Use the ATZ command to reset the modem and send the AT+CMGL=4 command (the response is OK or the list of saved text messages) to make sure that you have specified the correct settings.

4.6.4 Additional parameters

4.6.4.1 Data view change

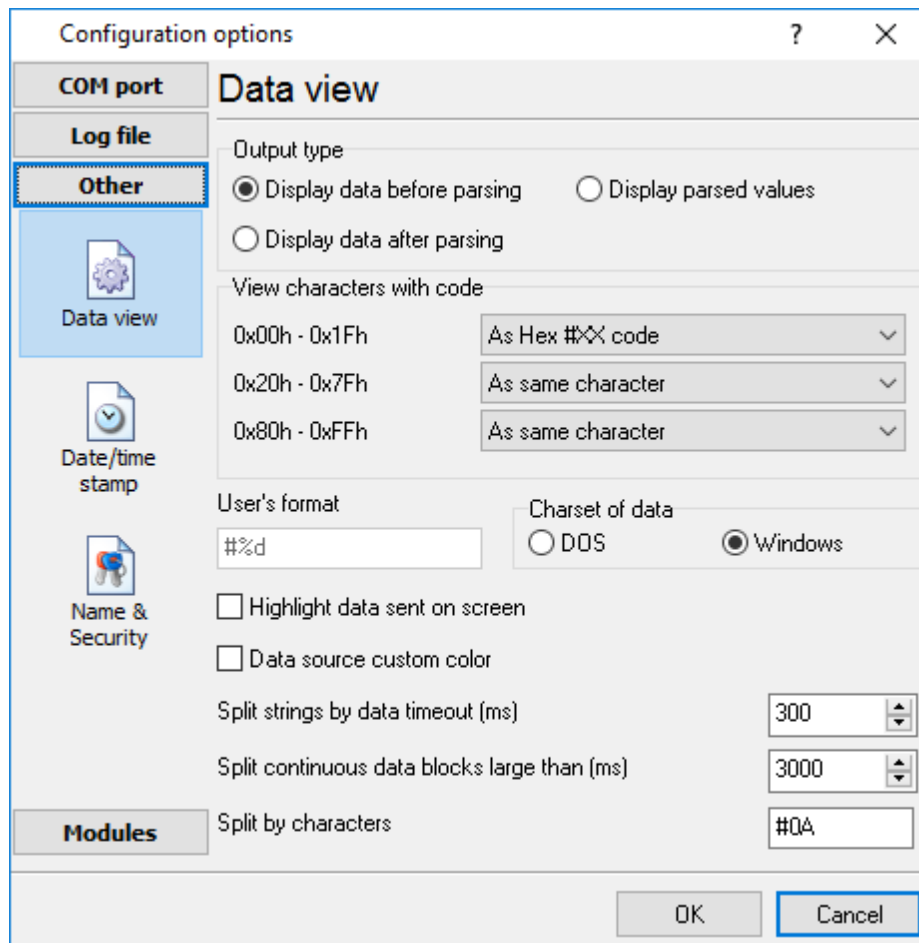


Fig. 3.1.1. Data view

Data view settings, that can be configured on the "Data view" tab:

1. **View characters with code** - the program can interpret and decode bytes as characters. You can select decoding mode for each characters range. If the range doesn't have the corresponding character, that's why these data can be displayed only in hexadecimal and decimal code.
2. You can set up data byte display **users format**. The directive %d shows to display an decimal code, the directive %x - hex code. You can set any framing characters before/after the user format.
3. **Highlight data sent on screen** - string with sent data will be highlighted by the set color.
4. **Character set** - allows to define the character set of incoming data. Windows - Windows ANSI character set, DOS - OEM character set.
5. Data source custom color - if you've created several configurations then you can define a custom color for each data source that allows to distinguish data flows on the "All data" page in the main window.
6. **Split strings by data timeout** - this option allows to visually split data packets in the program

window. A data packets that will be received after the specified interval will be showed on a new line. If this value is set to 0 then data packets will not split.

7. **Split continuous data blocks large than** - this option allows to visually split continuous data flow in the program window. The program will show data from a new line every specified interval.
8. **Split by characters** - this option allows to visually split continuous data flow in the program window using the specified symbols. For example (fig. 3.1.1), the program will use a character with the 0Ah hexadecimal code that is equal to the "LF" ASCII code.

4.6.4.2 Date/time configuration

This group of options (fig. 3.2.1) allows you to configure how data and time stamps appear in the log file and on the screen. You can configure the stamp format in the [program options](#) [40].

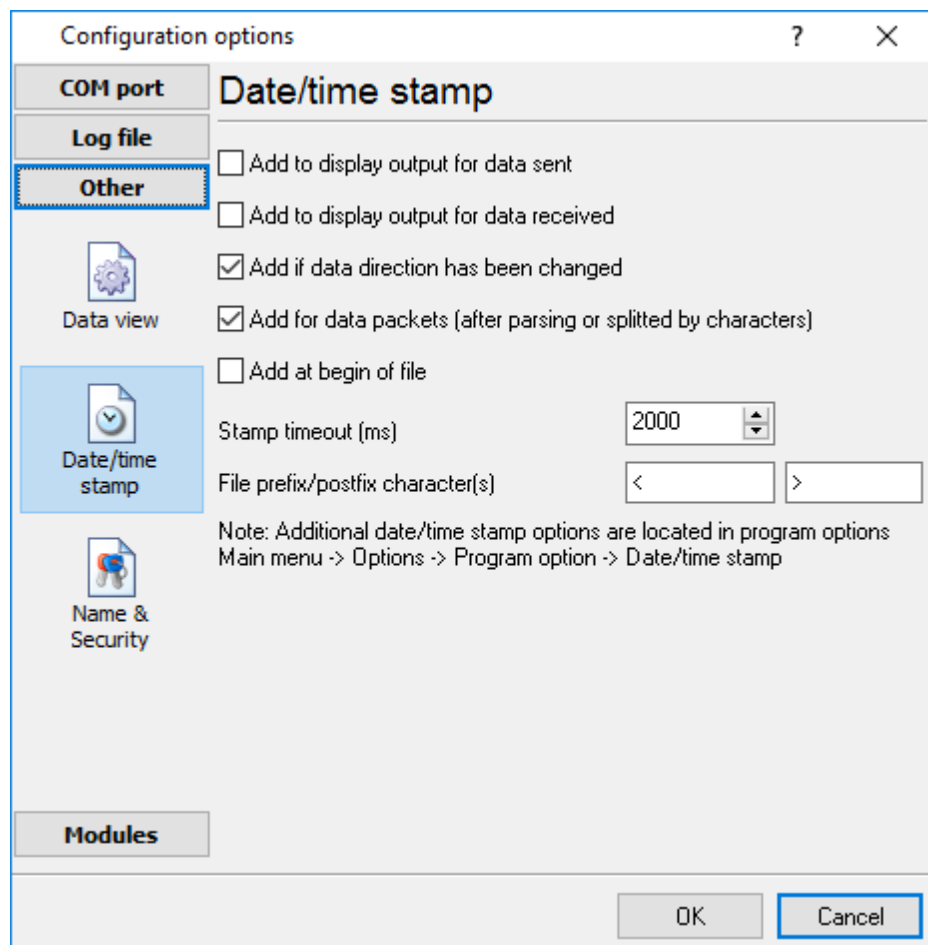


Fig. 3.2.1 Time stamp configuration

Add to display output for data sent - the time stamp will be added for the sent data displayed on the screen. The stamp will be added according to the timeout (if the data flow is uninterrupted) or when a data packet is sent.

Add to display output for data received - the same but for the received data.

Add if data direction has been changed - if the program is sending and receiving data, the time

stamp will be also added when the data transfer direction changes (sending/receiving).

Add for data packets - if the data is displayed after it is processed, the stamp will be added to each processed data packet.

Add at begin of file - the stamp will be added at the beginning of every new log file.

Stamp timeout - if the data flow is uninterrupted, the stamp will be added regularly at the interval specified in milliseconds.

File prefix/postfix character(s) - the program will use these characters instead of those specified in the [program options](#)^[40] while writing data to a file. For example, it allows you to add the new line character or another sequence of characters before or after the stamp. Example: >#0D#0A

4.6.4.3 Name and security

This group of options (fig. 3.3.1) allows you to configure the following parameters:

Friendly name - this name will be added before the port number or the data source in the drop-down list in the main window of the program. It allows you to describe the data source.

Start logging automatically - if this option is enabled, the program will start receiving and logging data automatically when it is launched.

The "Security" option group allows you to protect user operations in this particular configuration with a password. You can specify advanced security options applied to the entire program in the [program options](#)^[47].

Ask password before start and stop - the password will be required when the user clicks the "Start/Pause" button in the main window of the program.

Ask password before configuration edit - the password will be required when the user tries to open the Configuration options dialog box.



Fig. 3.3.1. Name and security

4.6.5 Log files

4.6.5.1 Log rotation

The main function of GPS Tracker Data Logger is logging data to a file (so-called, log file). The "Log rotation" tab has a rich set of options for it. (fig. 4.1.1).

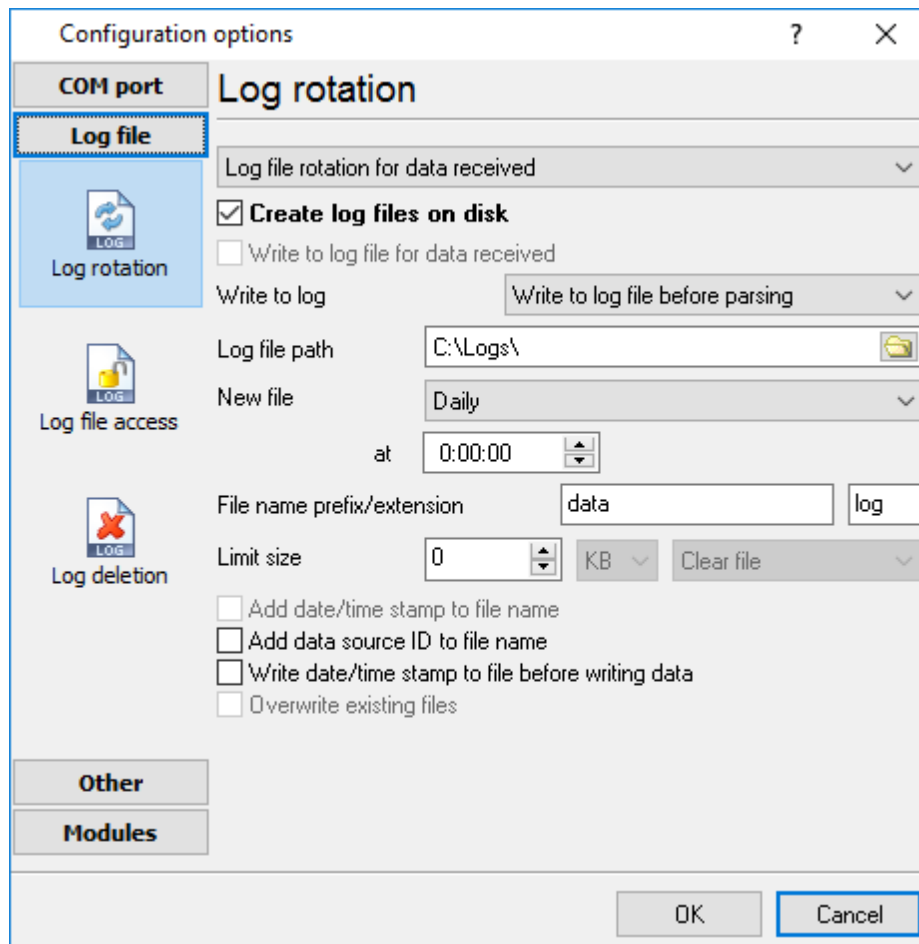


Fig. 4.1.1 Log-file forming modes

First of all, select log file what you can configure:

- **Log file for data received** - all data received will be saved here.
- **Log file for data sent** - all data sent will be saved here. If you want to save data to the same file, as data received, then select the "Log file rotation for data sent" from the list and enable two options: "Create log files on disk" and "Write to log for data received". Yes, of course, you should configure a log rotation for data received before.

Set the "Create log file on disk" option to checked state. Then you can set path to folder, where files will be created with the help of dialog window, which will be showed up after clicking a button with picture of opening folder. You should select a necessary folder in the dialog window and click the "OK" button.

Note: The program can work with network paths too, but in this mode, the program will increase

data flow over a network and can be failed with exceptional errors.

A log file name can be stamped with date and time. In this case a new log file is created periodically. The time stamp format depends on the selected period. For instance, if the "**File name prefix**" field is set to "sample", the "**File extension**" field to "log" and the "**File name format**" option is "Daily", then each log file created will have the format "sampleYYYYMMDD.log". On March 21st, 2003, the log file will be "sample20030321.log". Please, note, that the final extension (after the final period), remains at the end of the file name.

Log rotation mode is defined by the following key parameters:

- **File name prefix** - text string, which will be added at file name beginning;
- **File name extension** - text string, which will be a file extension (characters after dot);

Limit size - the "Limit size" field specify the maximum size in kilobytes of any log file. If you'll specify zero size, then the file size will not limited. You may select from the following modes:

1. **Clear file** - if the log file size will exceed the limit specified, then the log file content will be deleted and file filling will start from beginning.
2. **Rename old** - if the log file size will exceed the limit specified then the existing log file will be renamed.
3. **Shift (no threshold)** - the older data over the limit specified will removed from the log file.
4. **Shift (with threshold)**. In this mode the program will wait when the file size will exceed the limit specified + the threshold value. After this, the older data over the limit specified will removed from the log file.

If the program works continuous for a long time, it is possible that the log file will have large size and this file will be inconvenient for looking and analysing. For this there is the possibility to create files in dependence with the time on PC. You can select one variant predefined or set up new one:

- **Daily** - file will be created with name containing prefix, and date in format DDMMYYYY, where DD is two-digit day sign, MM is two-digit month sign and YYYY is four digits of the current year. The file name extension will be added at the end of file;
- **Monthly** - file will be created with name containing prefix, and date in MMYYYY format. The file name extension will be added at the end of file;
- **Each data packet in different file** - in this mode the program splits data flow to a different file. In this mode you should configure the parser or the program will split a data by timeout about 300 ms.
- **Don't create new file** - in this mode the program will write all data to one file. It is recommended for a small data flow. Otherwise your log file will be too big and a performance of the program will fall down;
- **User's format** - file will be created with name containing prefix and date in showed by you format (for example, DDMMYYYY). The file name extension will be added at the end of file. The file may not contain format signs, then file name will be constant. You should not use characters, that the OS doesn't allows in file name, such as "/", "\", "*", "?" and some others;
- **Weekly** - create a new file every week. The file name will contains a week number;
- **After data timeout** - the program will create a new file if the program didn't receive any data at the specified interval.
- **Hourly** - file will be created with name containing prefix, and date in format YYYYMMDDHH, where HH is two-digit hour sign, DD is two-digit day sign, MM is two-digit month sign and YYYY is four digits of the current year. The file name extension will be added at the end of file;
- **Constantly named file** - the current log file will have a constant name. When creating a new file the existing log file will be saved using the new file name that will contain a data and time

stamp.

Date and time formatting codes:

d - day, not adding null(1-31).
dd - day ,adding null(01-31).
ddd - day of the week in text form(Mon-Sat) according to standard, set on this computer.
dddd - day of the week in full text form(Monday-Saturday) according to standard, set on this computer.
m - month, not adding null(1-12).
mm - month, adding null (01-12).
mmm - month in text form(Jan-Dec) according to standard, set on this computer.
mmmm - month in full text form (January- December) according to standard, set on this computer.
yy - year in the form of two last digits(00-99)
yyyy - year in the form of four last digits (0000-9999).
h - hours, not adding null (0-23).
hh - hours, adding null (00-23).
n - minutes, not adding null (0-59)
nn - minutes, adding null (00-59).
s - seconds, not adding null (0-59).
ss - seconds, adding null (00-59).

Example: you want to create log file every hour. It is desired that file name starts from "sample_log" and the file extension "txt".

Answer: set file prefix = sample_log_, file extension= txt (without dot!). In file name format show HHDDMMYYYY. Now file will be created every hour. Naturally, you can set any formatting characters combination, described higher.

If you want to access to a log file while the program work, then you should configure [access mode settings](#) ^[29] for the log file in the next chapter.

Add date/time stamp to file name - this option is available for modes #4 and #7 and allows to add date and time to the file name.

Add data source ID to file name - if this options is activated then then the program will append the data source name at the beginning of the file name. For example, COM1-sample20030321.log.

Write data/time stamp to file before writing data - if this options is activated then then the program will write a date/time stamp to a file before each data portion.

Overwrite existing files - this option is available for modes #4 and #7 and allows to delete an existing log file before creating a new log file.

4.6.5.2 Log file access

During work can be such situations, when it is necessary to get access to a file with *current* data (current log file) from other applications (for example, for data processing). But while you are accessing the current log file GPS Tracker Data Logger can't write data to a log file and all data at this moment will be lost. We recommend to use a temporary file for data storage. It is most safe way. (fig. 4.2.1).

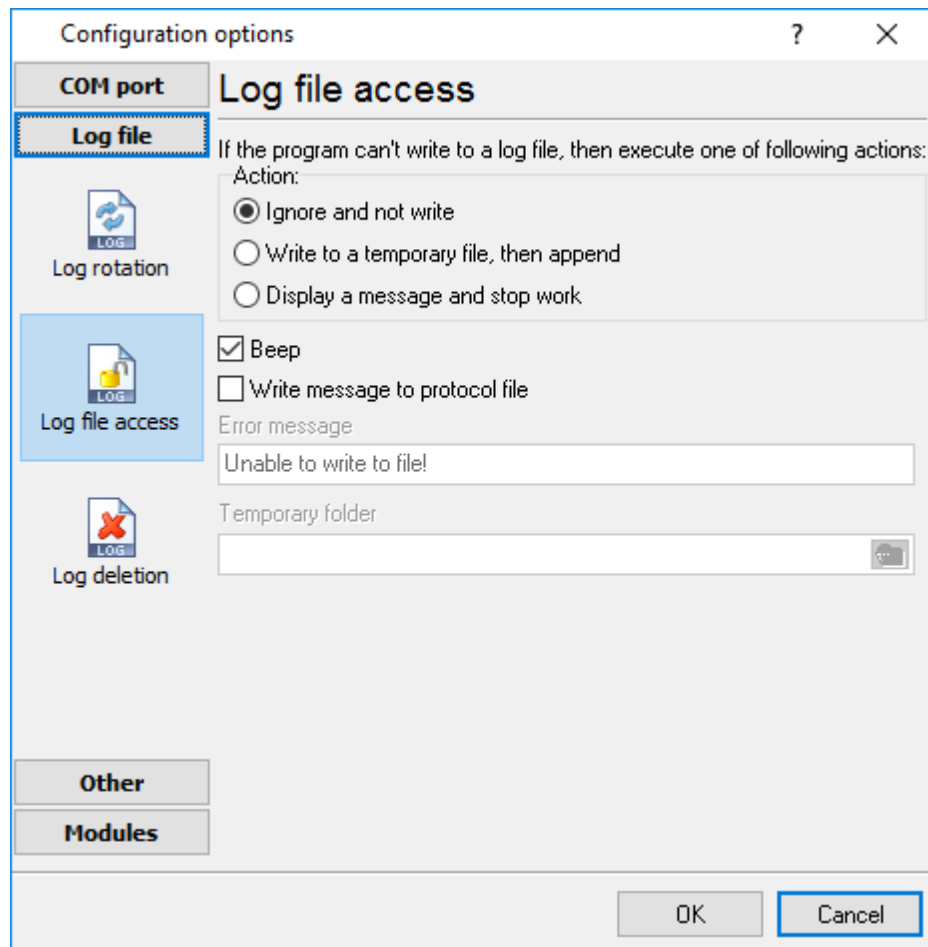


Fig. 4.2.1 File access mode.

You can select one from following variants:

- **Ignore and not write** - with this mode, the data will be **lost**;
- **Write to a temporary file, then append** - a temporary file will be created, to which writing will be done. After access to current file will be got, temporary file content will be added to the end of main file. But mind that if file is created in dependence of time, there can be a situation when at temporary file forming name of the main file will be changed. Then temporary file will be added to the end of newly created file.
- **Display a message and stop work** - data will be lost until dialog window is closed.

You can set up your message text, which will be displayed at writing error to data file. The sound signal can be on for an additional indication. You can also enable writing a message to a protocol file.

4.6.5.3 Log deletion

The deletion of files (fig. 4.3.1) will help you to avoid stuffing your hard disk with needless information. Log files can be deleted either depending on the time of storing or when the maximal number of files is exceeded.

When deleting files by the time of their storage, the files that were modified last time before the specified period are deleted.

When controlling the number of files, the files with the oldest modification dates are deleted first.

You can select both variants of file deletion. In that case files will be deleted when either of the conditions is true.

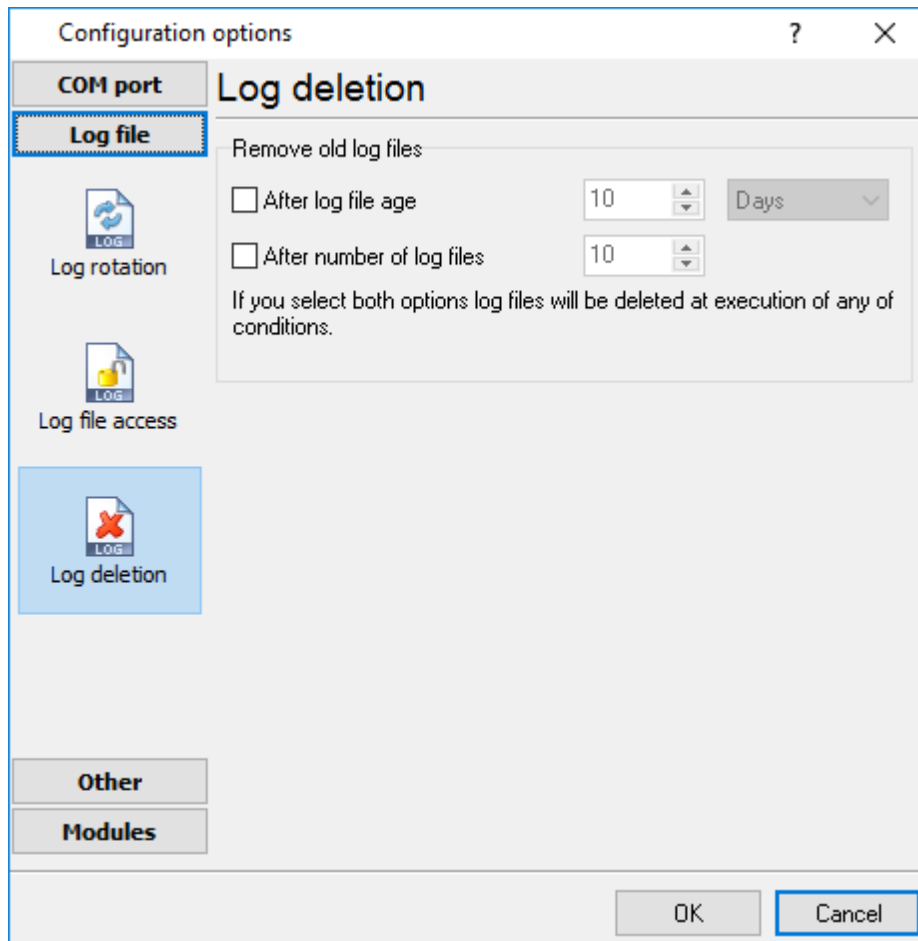


Fig. 4.3.1 Log deletion

4.6.6 Modules

4.6.6.1 Introduction & setup

To extend program functionality we implemented plug-ins modules. Module structure lets reduce your program size and purchase costs (you pay only functionality, which you need), to low down program distributive download time, your computer processor load and reduce disk space.

GPS Tracker Data Logger supports few types of modules (fig. 5.1.1 - 5.1.3):

- **Data query** - transmits queries or commands out the data source to control or query your instruments directly;

- **Data parser** - data parser that allows you to parse, filter and format more complex data from more sophisticated devices. Some of the advanced features of the parser are the ability to work with raw binary or hex data;
- **Data filter** - data filters allow you to filter your data and modify values of parser variables;
- **Data export** (fig.11) - GPS Tracker Data Logger has many modules for passing serial data directly to other applications, such as as keystrokes where incoming data is passed to other programs as a sequence of keys, as DDE Server that passes data to other programs using Dynamic Data Exchange, ODBC for exporting data to a database and many others;
- **Events handling** (fig.12) - an external plug-ins used to handle events generated by the GPS Tracker Data Logger software. Once an event occurs (for example: "Data source is opened" or "Configuration changed"), the plug-in creates a text message using the specified template and sends a notification, do some actions, such as execute programs, scripts and etc. The form of the notification or actions depends on the plug-in settings.

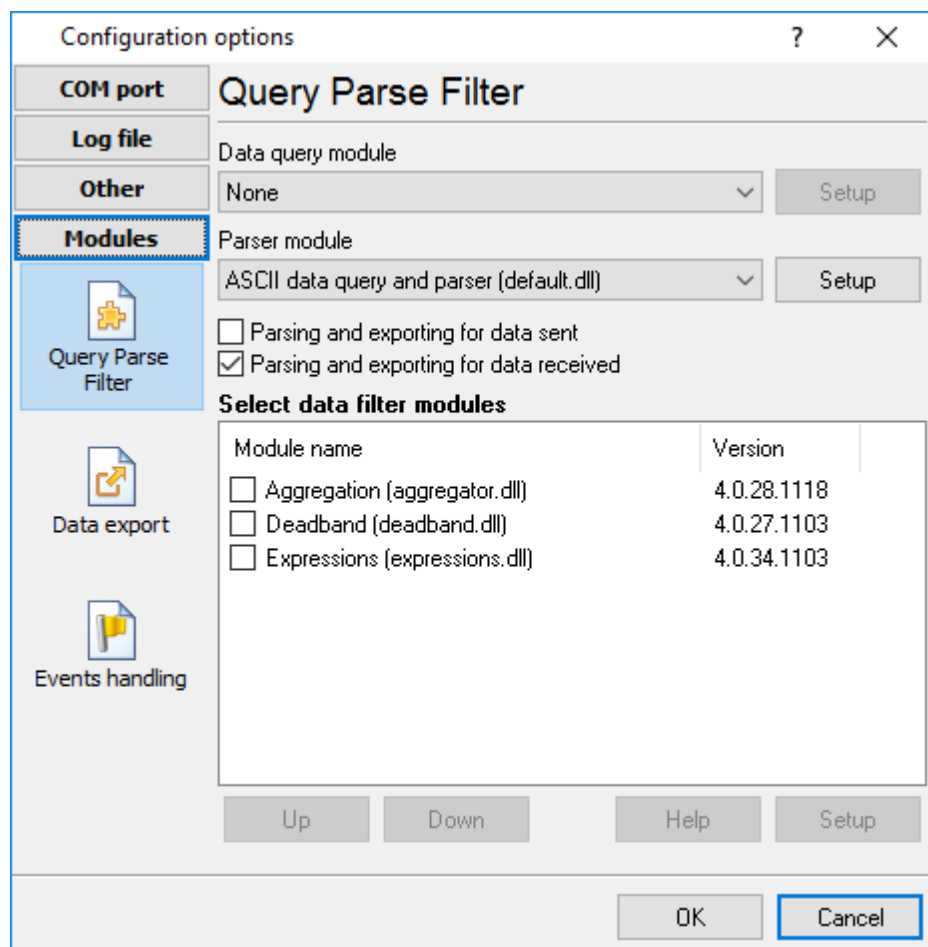


Fig. 5.1.1. Activating plug-ins

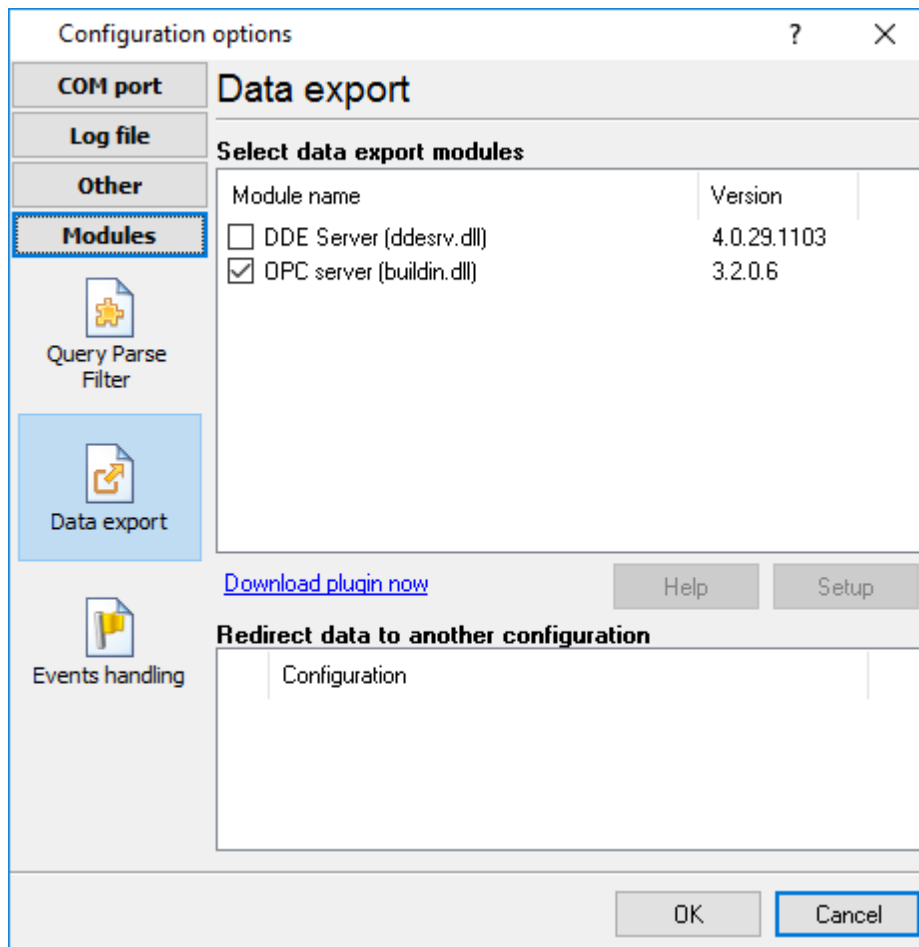


Fig. 5.1.2 Activating data export plug-ins

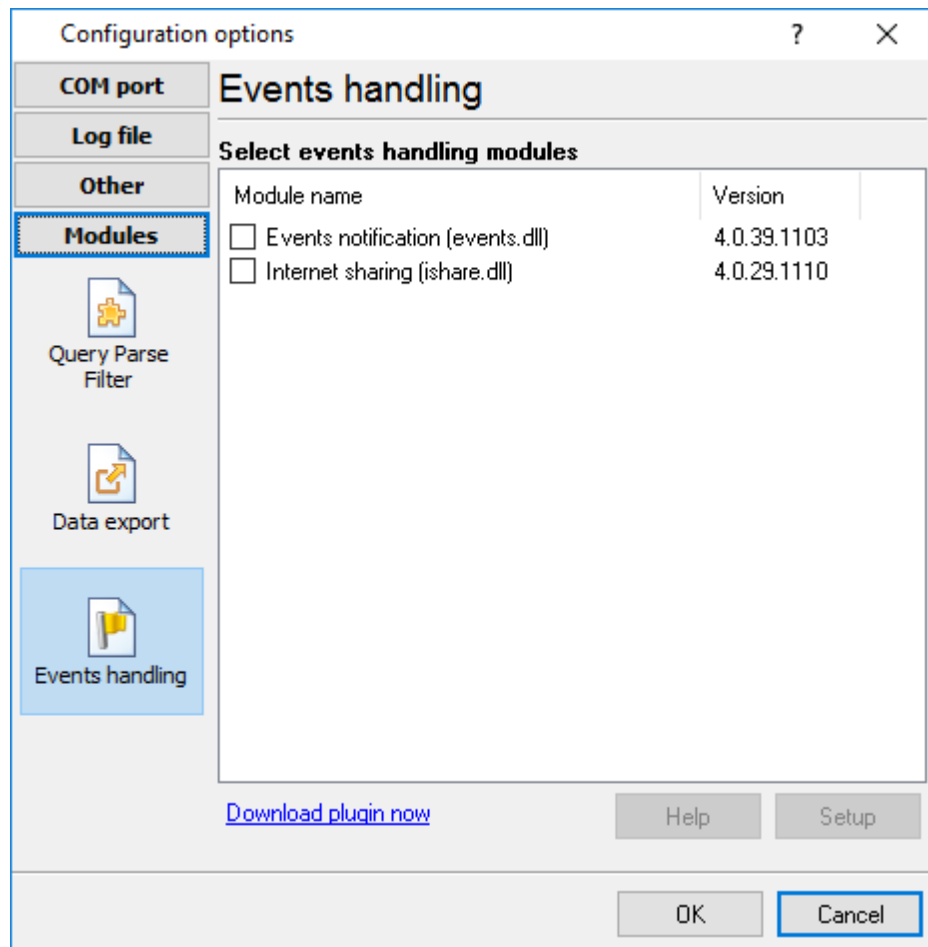


Fig. 5.1.3 Activating events handling plug-ins

You can parse and export data sent and received (fig. 5.1.1). By default, only data received will be parsed.

Installation

You can easily install a new module. usually, you should start the installation file and click the "Next" button for few times. The installation wizard will detect a place of your GPS Tracker Data Logger software and place a plug-in module and all distributive files to the "Plugins" folder, which is in the program folder (by default X:\Program Files\GPS Tracker Data Logger\Plugins).

After program restart a module will be loaded and initialized. If module is supported with our software, its short description you will see in modules list (Fig. 5.1.1-5.1.3). Most modules require additional settings. If you want to configure the plug-in module, simply click the "Setup" button near it. If you selected the module and the "Setup" button is not active, then module doesn't have additional settings and can work without additional settings. Please, read users manual of a corresponding plug-in for additional information.

Configuration steps

1. Select and configure a query module. You may use a module of this type if you need to send

- some data to your device (for example, initialization strings or request strings).
2. Select and configure a parser module. This step is necessary, because filter and export modules can use parsed data only. If you didn't select the parser module, then you can't configure the data filter and data export modules.
 3. Activate and configure data export modules. You can select one or more modules simultaneously. The program will use selected modules simultaneously. Please, note, the program can't use the data export module, if you didn't configure the parser module.
 4. Activate and configure event modules. You can select one or more modules simultaneously.

4.6.6.2 OPC server

Since the version 2.1.1 GPS Tracker Data Logger has an internal OPC server. It means, that any OPC compatible client application can get data from GPS Tracker Data Logger without any additional software. For connecting to the OPC server our OPC server has an unique attributes (Fig. 5.2.1). Before using the OPC server on your PC you should download and install the OPC Core Components Redistributable from www.opcfoundation.org (registration required).

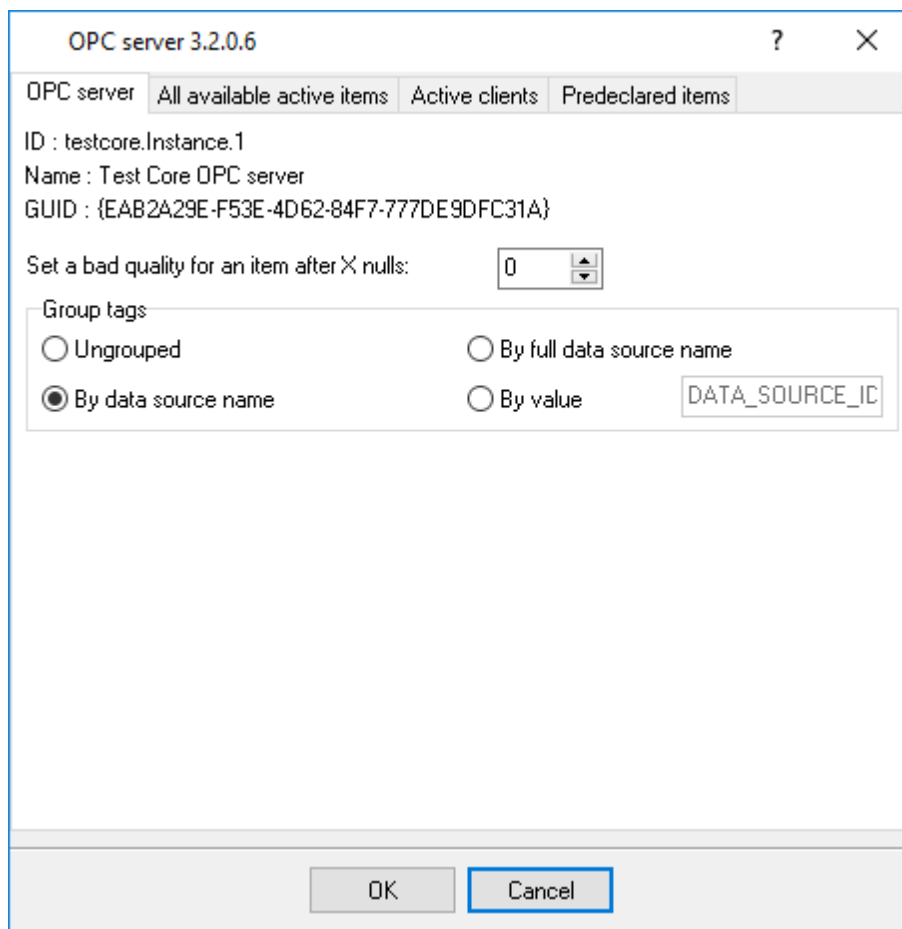


Fig. 5.2.1 OPC server parameters

GPS Tracker Data Logger are parsing all incoming data to one or more variables and OPC client are getting it (fig. 5.2.2). After connecting to the OPC server you will get list of all variables.

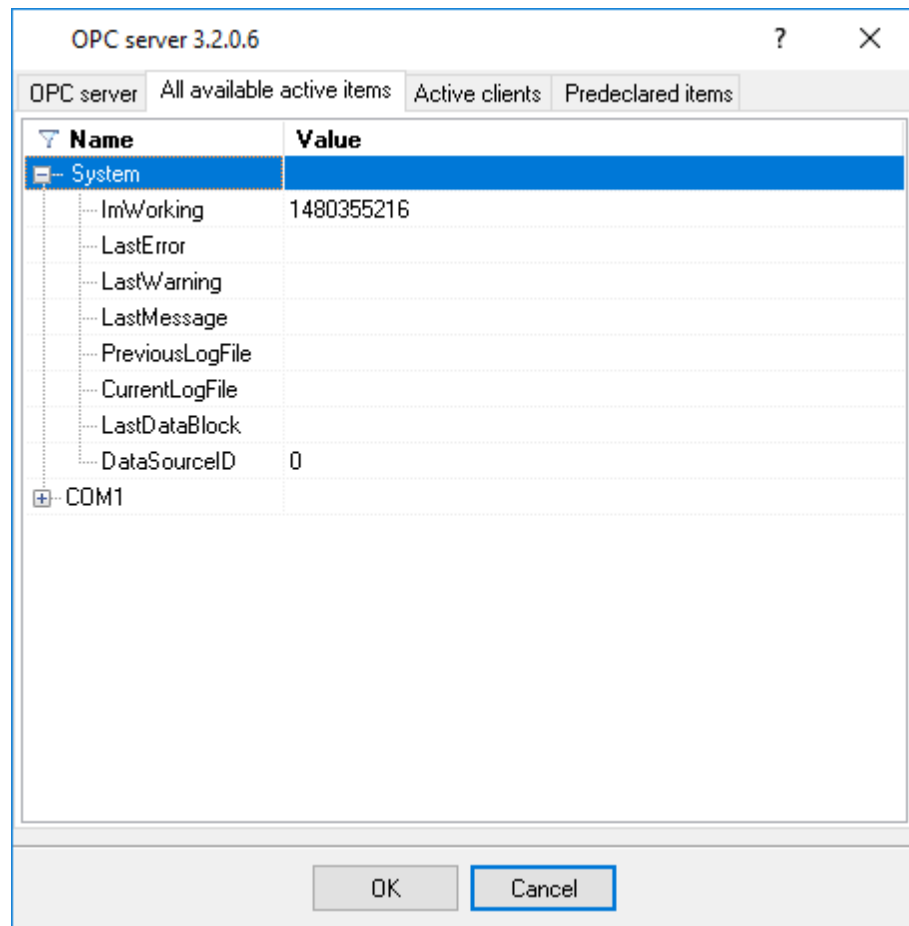


Fig. 5.2.2 OPC server active items

Clients activity is shown on the "Active clients" tab. The top node is client, below is group of items and connected items. By double-clicking, you can get a detailed information about each node.

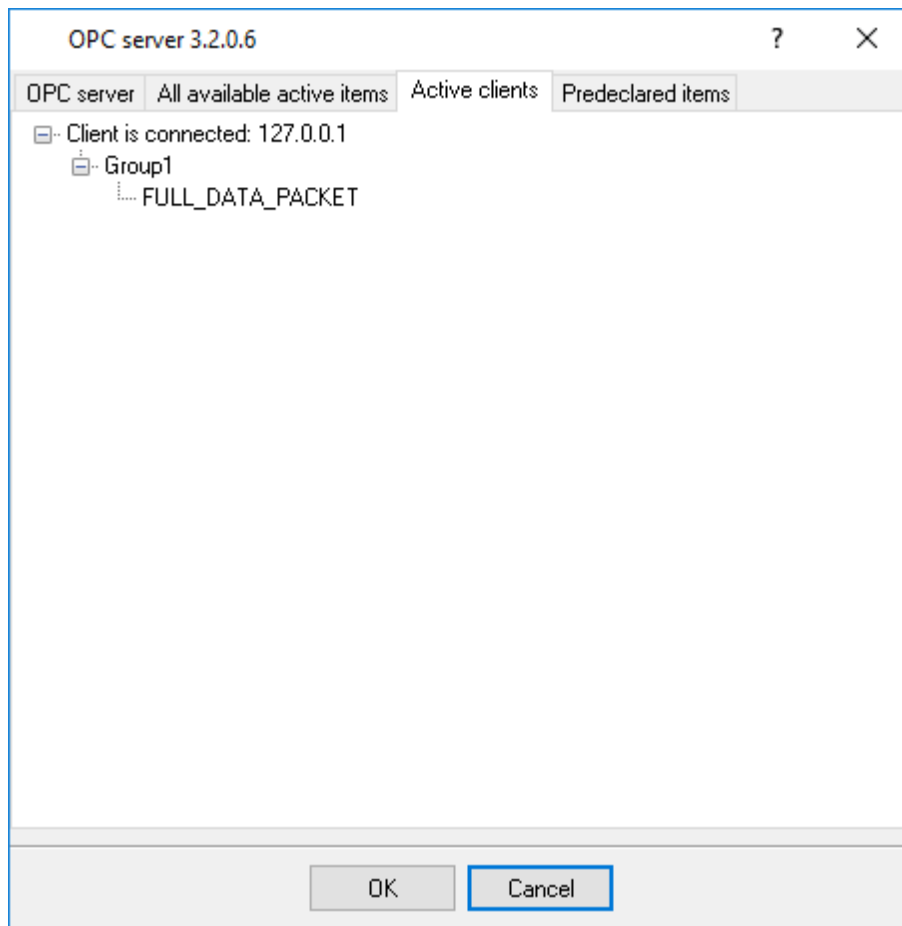


Fig. 5.2.3 OPC server clients

GPS Tracker Data Logger creates new variables at "on-the-fly" mode. The GPS Tracker Data Logger starts without any variables and get it only after first data had been received. If your client OPC will connect to the OPC server before, than data had been processed, then it will get empty list of variables and your OPC client should poll the OPC server for updating list of variables. If your OPC client doesn't allow it, then your can pre-define all variables (fig.5.2.4). In this case the OPC server will create these variables with empty values, immediate after starting and your OPC client will get these names while connecting.

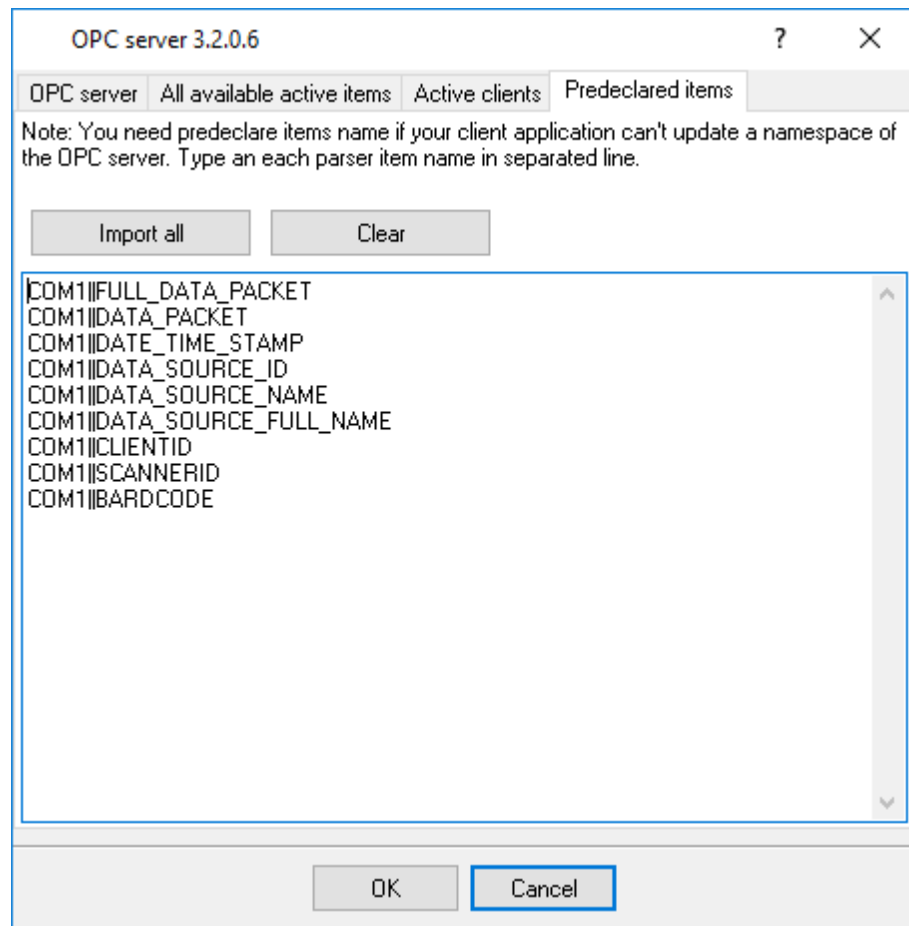


Fig. 5.2.4 OPC server pre-declaration

4.7 Program options

4.7.1 Window view

This tab in program options (fig. 6.1.1) allows you to customize appearance of the main window of the program (fig. 1.1.1⁷). You can access this tab through the "Options -> Program options" menu item in the main window.

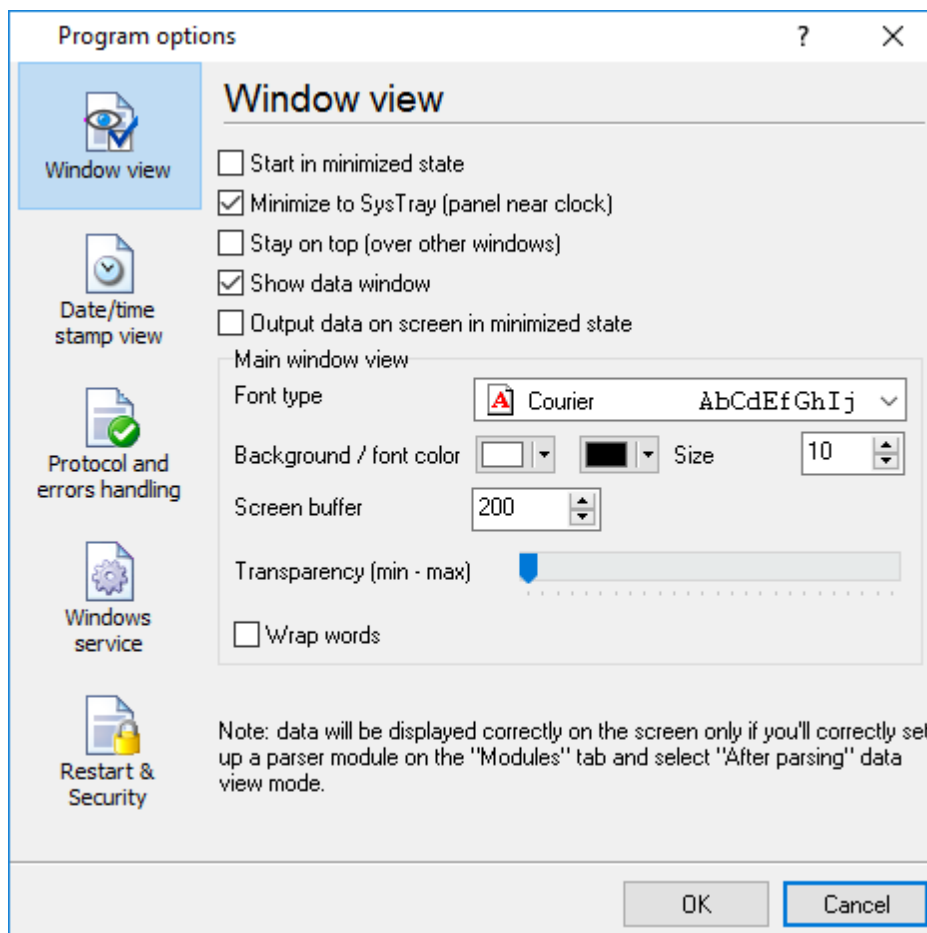


Fig. 6.1.1 Window view setting

You can set following parameters:

- **Start in minimized state** - at start GPS Tracker Data Logger will automatically put its icon on panel near clock (SysTray fig. 6.1.2);
- **Minimize to SysTray** - while the main window of GPS Tracker Data Logger minimizes, the program will automatically put its icon to the panel near clock;
- **Show data window** - if you specify this option, then the program will display all data in the main window. If you are logging many ports on slow PC, then you can decrease computer CPU load rate with disabling of this option;
- **Output data on screen in minimized state** - if you'll enable this option, then the program will display processed data in minimized state. If you are logging many data sources on slow PC, then you can decrease computer central processor load rate with disabling of this option;
- **Font type** - the data will be displayed with this font type in the main window only. We recommend to use mono-spaced fonts in this field, such as: Terminal, Courier etc.;
- **Screen buffer** - at exceeding of value specified the data window will be cleaned;
- **Window view** - will let you setup data window view (font color, font type, background color).
- **Transparency** - in Windows 2000 and later will let you set transparency of the main window. The most left position is normal window view and most right position is maximum transparency.
- **Wrap words** - if you didn't configure a parser module or your data flow doesn't contain a blocks separator, then your data without this option enabled will be displayed as one long string in the data window.

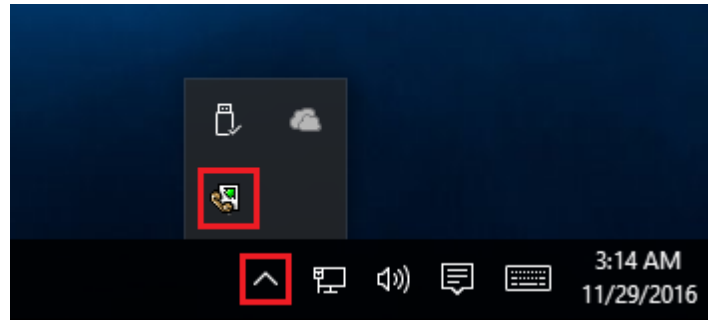


Fig. 6.1.2 Systray - panel near clock

4.7.2 Date/time stamp view

This group of options (fig. 6.2.1) allows to configure the format of date/time stamps that will be used in the main program window and log files.

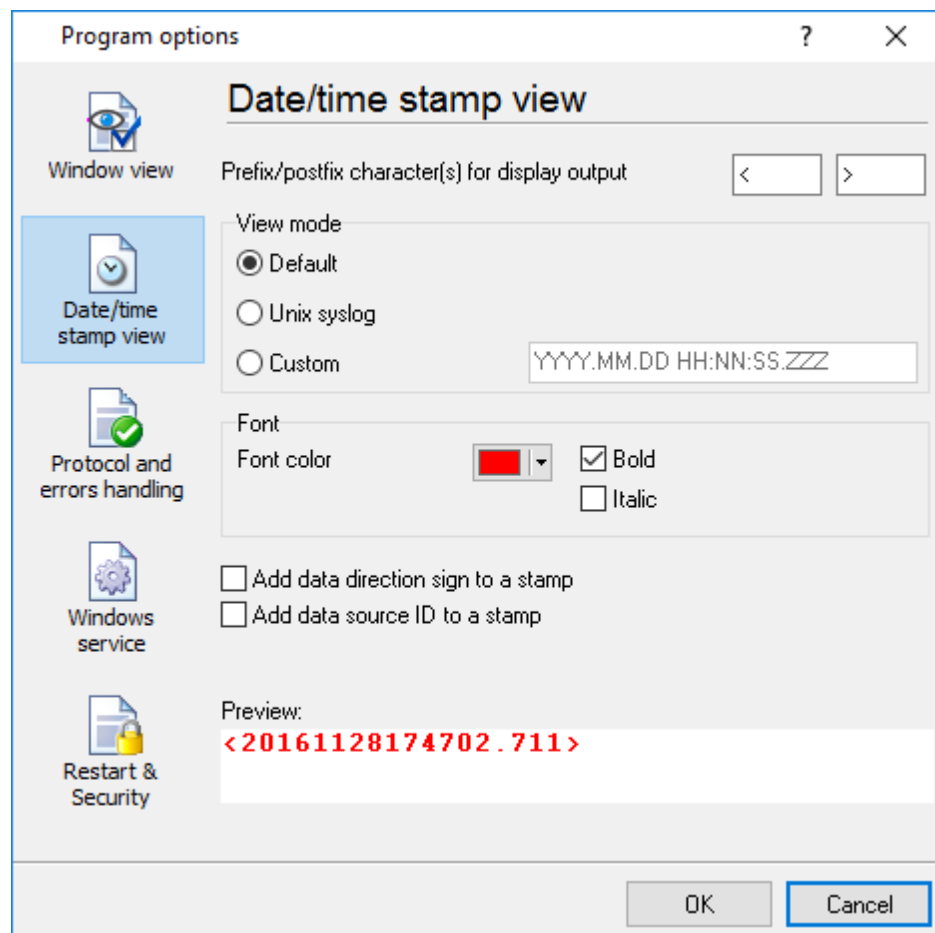


Fig. 6.2.1 Configuring data/stamp view

Prefix/Postfix characters for display output - these options allow to define beginning and ending characters of a date/time stamp that will be showed in the program window. When outputting data to

a log file the program uses [individual characters](#)^[24] for each configuration.

View mode - allows to select the standard or define the custom format of the date/time stamp.

Font - this group allows to define the color and font of date/time stamp.

Add data direction sign to a stamp - if this option is activated then the program will append TX or RX to the end of the stamp.

Add data source ID to a stamp - if this option is activated then the program will data append data source ID at the beginning of the stamp. For example, COM1.

4.7.3 Protocol and errors handling

While the program execute, she generates many messages about errors and events. All these messages are being registered in a protocol file. This can be start or stop of the program, some messages from plug-in modules etc. On this tab you can define the kind of messages, which you want to put a protocol file (fig. 6.3.1). Here you can set maximum protocol file size and a formatting mode. Usually, the protocol file is in a program folder and has the name of the program with the 'log' extension.

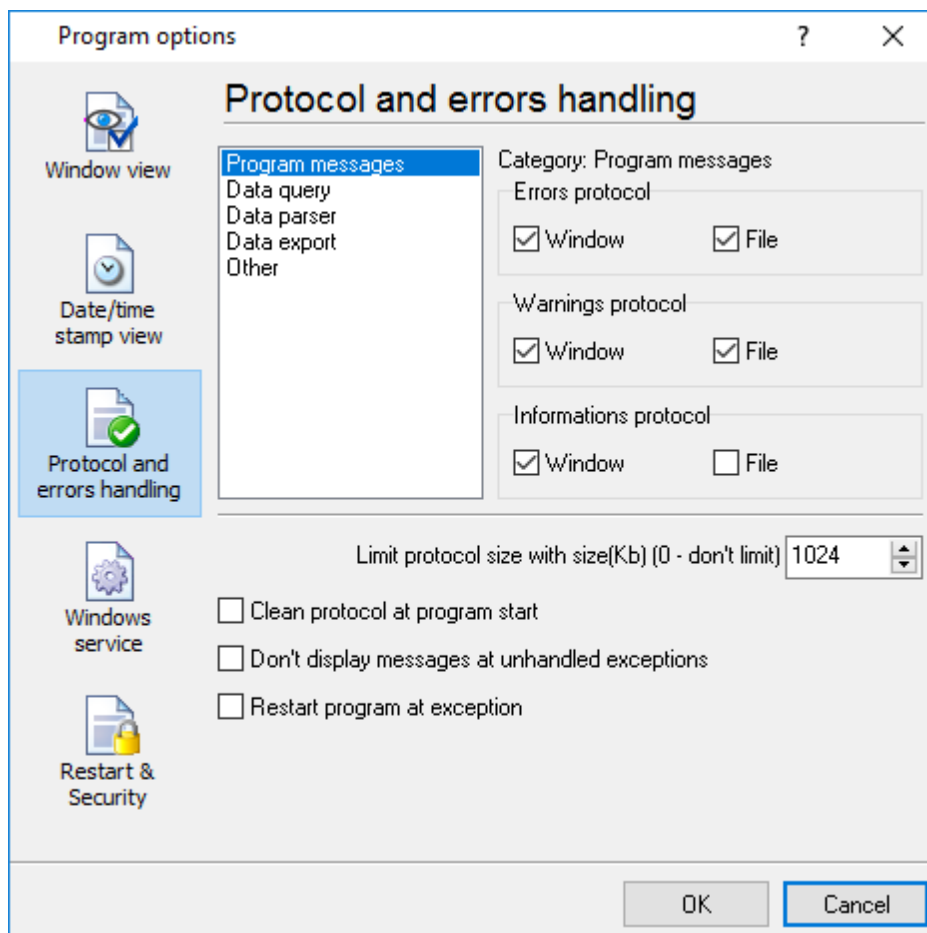


Fig. 6.3.1 Protocol settings

GPS Tracker Data Logger works with three types of messages:

- **Information messages** - this type of messages informs you on operations which are fulfilled in the current time;
- **Warnings** - warns you of possible failures or possible errors. Interference of the user is not required, but check is required;
- **Errors** - the program has detected an error which elimination needs involvement of the user.

There is the possibility to log following events:

- **Program messages** - messages about start or stop of the program, etc.;
- **Data query** - messages which are generated in a data query module;
- **Data parser** - messages which are generated in a data parser module;
- **Data export** - messages which are generated in a data export module;
- **Other** - messages that can not be associated with types above.

You can write each type of messages to a protocol file or/and to the list in the main window. Please, specify necessary options for each message type at "Window" and "File" fields.

If you don't want to allow to grow a protocol file size to an unlimited size, then you can enable the "Clean protocol at program start" or limit protocol file size in the "Size" field.

Some exceptional messages can occur while the program execute. In most cases these messages crash the program and the most safe way is to restart the program. Please, specify the "Restart program at exception" option and the program will be restarted automatically.

If you want look all program messages, then you can disable the "Don't display messages at unhandled exceptions" check box and the program will open the exception message window with detailed information.

4.7.4 Service mode on Windows 2000+

4.7.4.1 Configuration

Windows NT+ services use will let you:

- control service on local and remote computers, including remote computers with Windows NT 4.0 system;
- setup actions on emergency service restore in case of failure, for example auto service or computer restart (only on computers with Windows 2000 or later);
- create for services other names and descriptions, to find them easier (only on computers with system Windows 2000 or later);
- run service before user login (password input);
- service can be setup on automatic start after operation system load.

Note 1: you must be logged in as an administrator in order to change the configuration or control the service in any way (start, stop, pause, continue).

Note 2: On Windows Vista and later you should start the program with elevated administrator

privileges.

If you want to use the program as a service application, then, please, go to the "Options -> Program options -> Windows service" tab (fig. 6.4.1), then enable the "Use program as a service" check box. Later, please, specify the startup type of the service. There can be following variants:

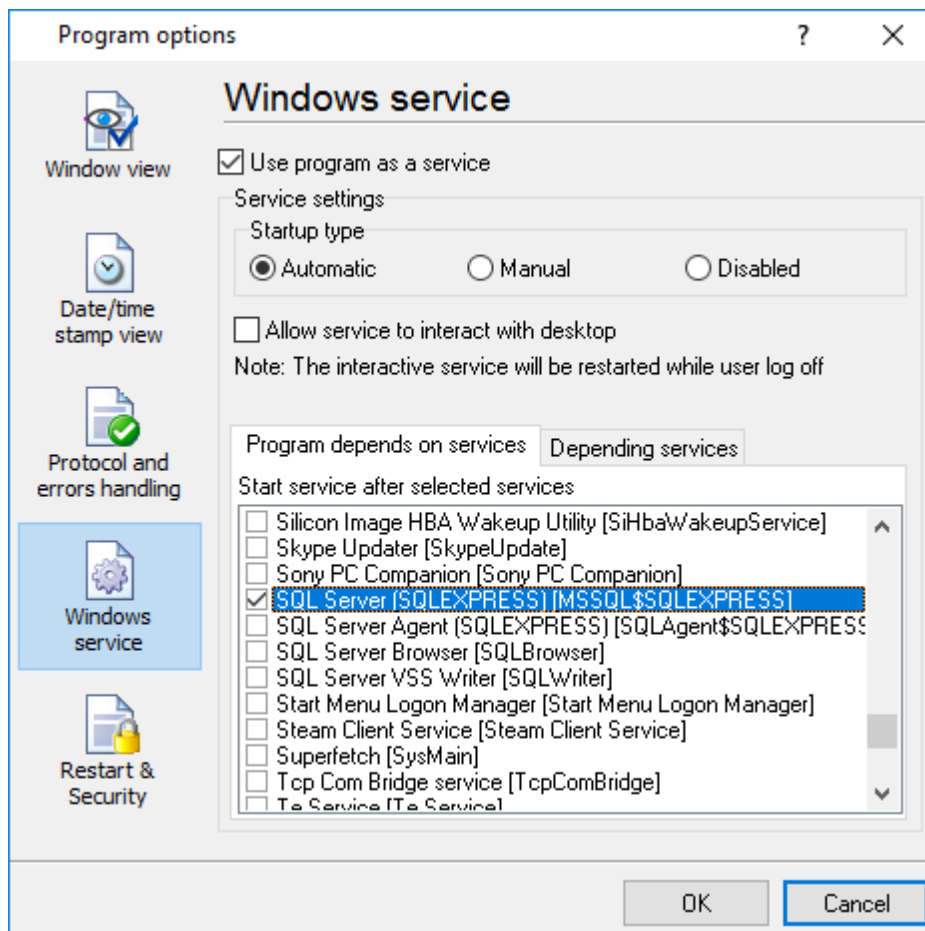


Fig. 6.4.1 Service settings

1. **Automatic** - service will be started automatically at every Windows start, before user login;
2. **Manual** - you can start the service application in the "Services" window in the Control panel (fig. 6.4.2);
3. **Disabled** - service can't be started.

If you want to change program settings while service mode, then enable the "Allow service to interact with desktop" option. In this case, the program will put the icon to the SysTray (fig. 6.4.2). But then your interactive service will be restarted while user log off.

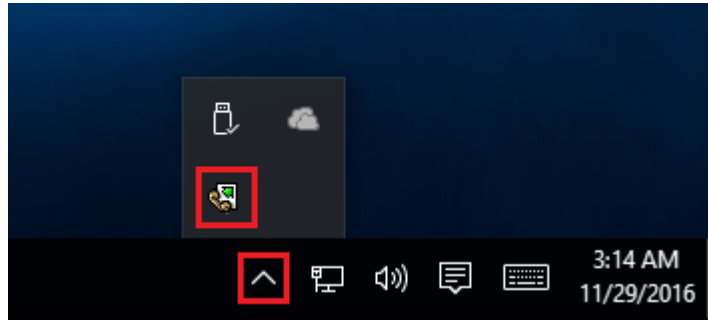


Fig. 6.4.2 Service icon in Systray

If you use data bases or special drivers, before service run, these applications must be run. You can specify what services should be started before GPS Tracker Data Logger in the "Program depends on services" window (fig. 6.4.3).

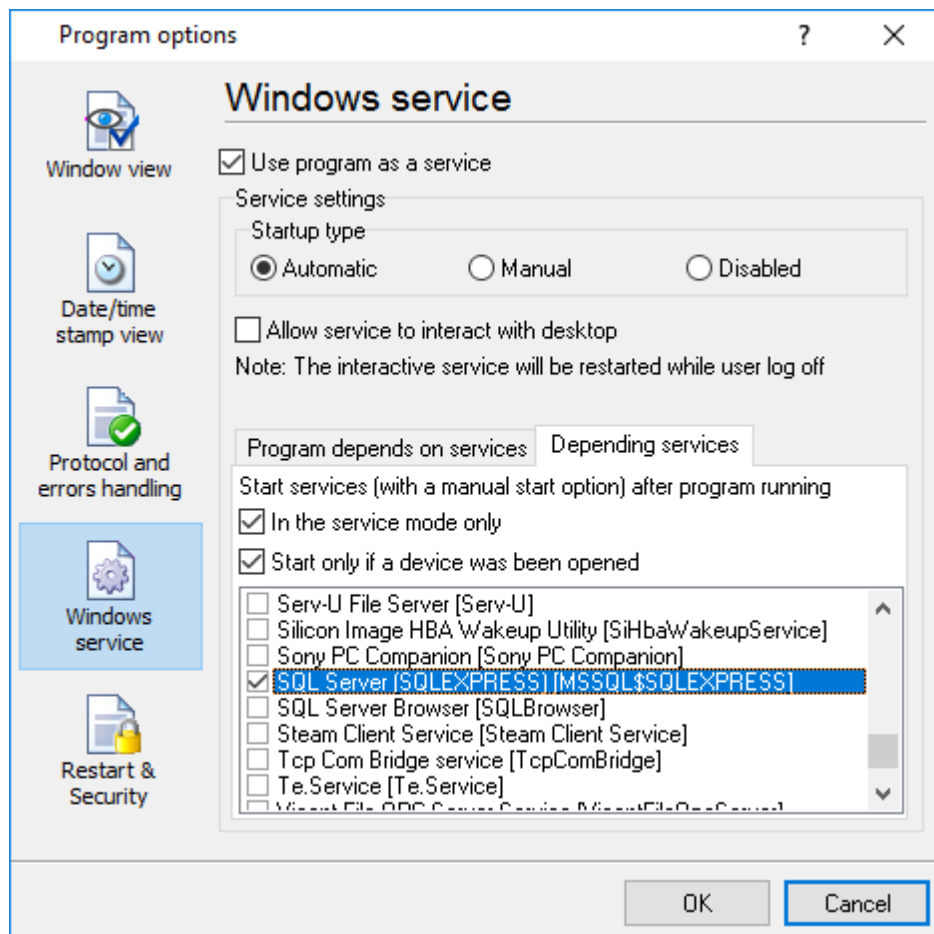


Fig. 6.4.3 Service settings #2

In some case you need to start GPS Tracker Data Logger before starting other services. In this case you should:

- Switch a start mode of a target service to "Manual";
- Start GPS Tracker Data Logger;

- Set on the target service at the "Services depend on ASDL" tab;
- Select mode when you need start these service;
- Restart GPS Tracker Data Logger.

After you installed the service mode of the program, restart a computer or run the service manually from the "Services" window in the Control panel (fig. 6.4.4)

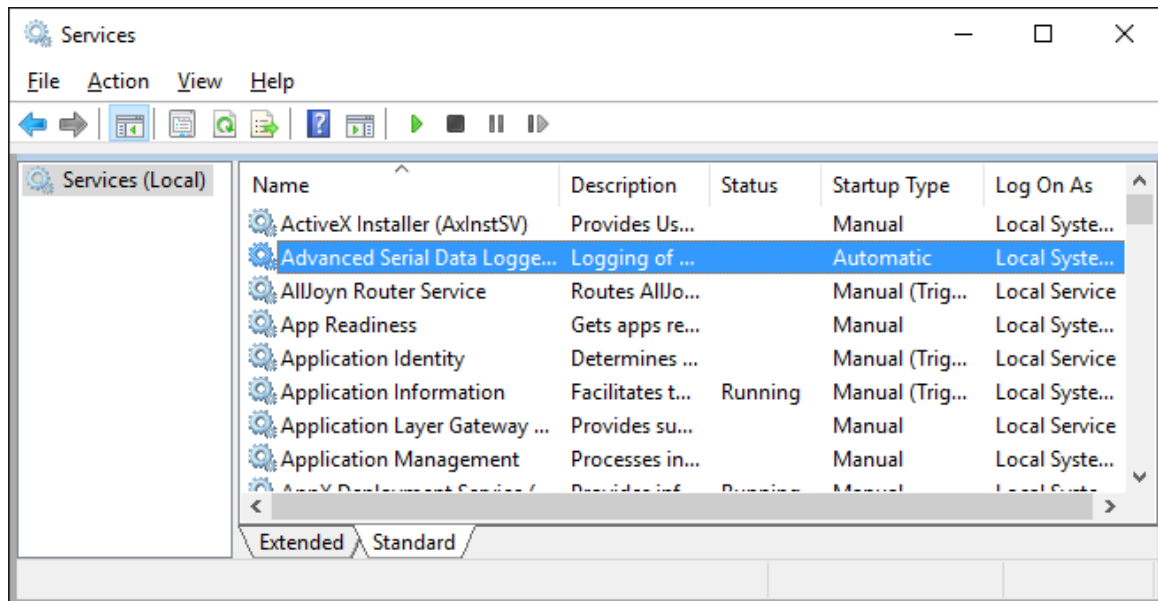


Fig. 6.4.4 Manual service run (in Windows 2000)

After start of the service, the service processes names will be displayed in a process list: gpstrackersrv.exe and gpstracker.exe (fig. 6.4.5). The 'gpstrackersrv.exe' application makes interface between the service manager and the GPS Tracker Data Logger software. Unlike svany.exe utility, our service stops safely.

The screenshot shows the Windows Task Manager Performance tab. The 'Processes' section is expanded, showing a list of running processes. The 'Advanced Serial Data Logger - L...' process is highlighted in blue. The table below represents the data shown in the screenshot.

Name	CPU	Memory	Disk	Network
Apps (1)				
Task Manager	12.2%	9.0 MB	0 MB/s	0 Mbps
Background processes (39)				
Advanced Serial Data Logger - L...	0%	8.4 MB	0 MB/s	0 Mbps
Advanced Serial Data Logger - L...	0%	0.6 MB	0 MB/s	0 Mbps
Application Frame Host	0%	2.0 MB	0 MB/s	0 Mbps
COM Surrogate	0%	2.5 MB	0 MB/s	0 Mbps
Cortana	0%	70.6 MB	0 MB/s	0 Mbps
Device Census	0%	1.2 MB	0.1 MB/s	0 Mbps
Host Process for Windows Tasks	0%	0.7 MB	0 MB/s	0 Mbps
Host Process for Windows Tasks	0%	4.8 MB	0 MB/s	0 Mbps

Fig. 6.4.5 Process list

If you want to configure the program as a service, then you must be logged with administrator rights. The service application can be controlled, stopped or removed with help of a command line string. Run gpstrackersrv.exe with following parameters:

- /? - short help;
- /I - install service for start in manual mode;
- /A - install service for start in automatic mode;
- /D - install service in off state;
- /R - remove service from computer.

4.7.4.2 Windows Vista+ notes

One of the ways Vista's security was improved was by separating system services and user applications into separate 'sessions'. Keeping the system services isolated helps to better secure them, but also makes any interactive interface unavailable to the user. That's where the Interactive Services Detection service comes in. When a service needs to interact with the user, Interactive Services Detection presents a dialog that will switch the user to the session where the service is running so they can interact with the service. For an excellent, detailed description of this, see next

paragraph.

Many sites recommend disabling this service, but doing so will result in you not being able to interact with any services that require your attention. This service is run manually by default, so there is little point to disabling it unless you don't want to be bothered by important information from the software you may be trying to run.

- **Display Name:** Interactive Services Detection
- **Service Name:** UI0Detect
- **Process Name:** UI0Detect.exe
- **Description:** Enables user notification of user input for interactive services, which enables access to dialogs created by interactive services when they appear. If this service is stopped, notifications of new interactive service dialogs will no longer function and there may no longer be access to interactive service dialogs. If this service is disabled, both notifications of and access to new interactive service dialogs will no longer function.
- **Path to Executable:** %windir%\system32\UI0Detect.exe
- **Default Startup:**
 - * Home Basic: Manual
 - * Home Premium: Manual
 - * Business: Manual
 - * Enterprise: Manual
 - * Ultimate: Manual

4.7.5 Restart & Security

Sometimes the program should be restarted. For example, if you've changed the program settings remotely and want to reload program automatically with the new settings. To do that, specify the time for restarting the program on the "Restart & Security" tab in program options "Options->Program options". Just specify the time of day, when the program should be being restarted.

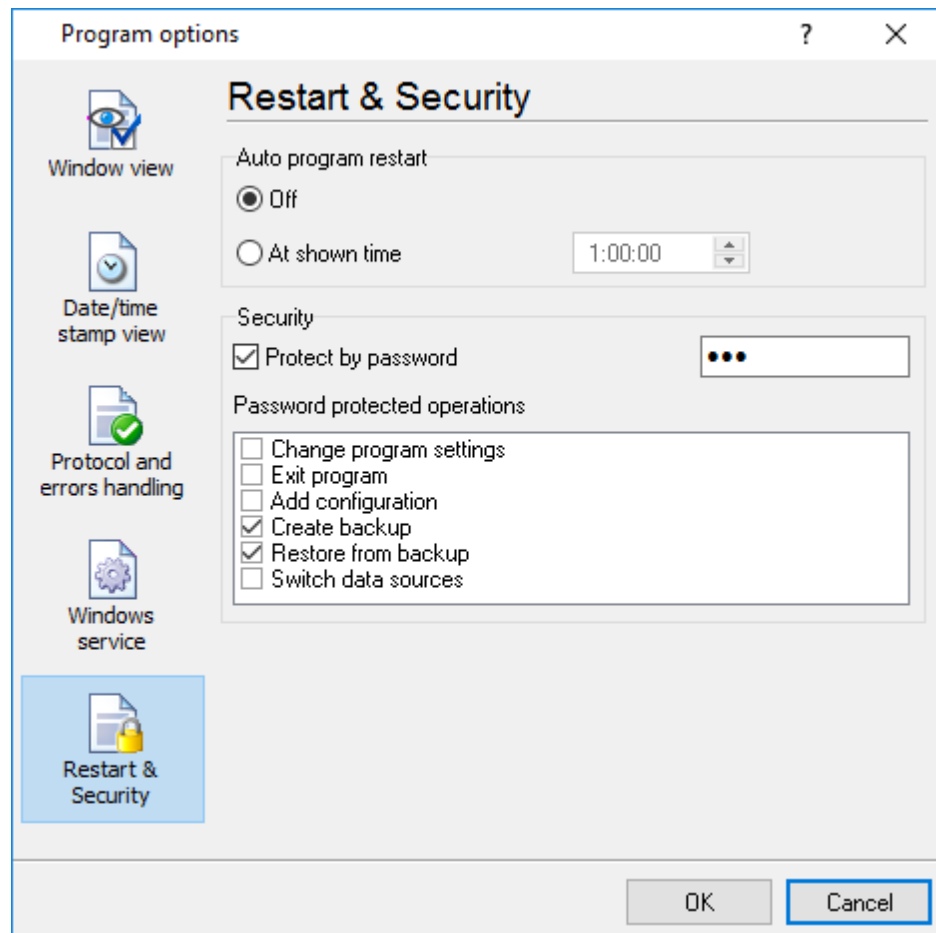


Fig. 6.5.1 Program restart settings

On this tab you can also protect some actions with the program by a password. To do that, activate the "Protect by password" option, define a password and select protectable actions.

6 Having problems?

6.1 Program doesn't run or work

It is necessary to make sure in proper time installation on your computer, so as if you put clock after program installation, protection from use after trial period works.

Also program won't work, if you started SoftIce application debug environment or some other. In any other case, please, inform our developers about your problems, our address support@aggsoft.com.

6.2 FAQ

Question: Why COM port doesn't open?

Answer: Probably, some other program already uses it (COM port). This can be DOS application, for example.

Question: What to do?

Answer: Close application, using this communicative port (for DOS application close also DOS session window). Or use other communicative port. Probably, at start or some program stop was made some fatal error and COM port wasn't properly closed.

Question: Is it possible to set variable data transmit rate or transmit 9 data bits?

Answer: No, Windows operation system doesn't let such liberties.

Question: What cutoff point type to use: DB25 or DB 9?

Answer: It makes no difference, select only in program corresponding COM-port. USUALLY DB25 - COM2, DB9 - COM1

Question: Is cable connection direct or null-modem?

Answer: Everything depends on your device cutoff point. Usually it is necessary to use null-modem cable, in which signals are moved apart in this way:

Device		Computer
RXD	<-->	TXD
TXD	<-->	RXD
GND	<-->	GND

if device uses special signals DTR and others and you don't want to use hardware data transmit control, at device side connect 7 and 8 contacts of DB9 cutoff point or analogous DB25 cutoff point signals.

More hardware tips and articles you can found on our site <http://www.aggsoft.com>.

Question: Is data receive becomes at once after program start or data receive must be started?

Answer: Everything depends on your device type, usually in device settings is selected to echo view data to COM port. If your device doesn't support this mode, write what initialization string must be sent to read out data, and we add this possibility to the program.