



Send keystrokes module for Advanced Serial Data Logger

© 2003 AGG Software

All rights reserved. No parts of this work may be reproduced in any form or by any means - graphic, electronic, or mechanical, including photocopying, recording, taping, or information storage and retrieval systems - without the written permission of the publisher.

Products that are referred to in this document may be either trademarks and/or registered trademarks of the respective owners. The publisher and the author make no claim to these trademarks.

While every precaution has been taken in the preparation of this document, the publisher and the author assume no responsibility for errors or omissions, or for damages resulting from the use of information contained in this document or from the use of programs and source code that may accompany it. In no event shall the publisher and the author be liable for any loss of profit or any other commercial damage caused or alleged to have been caused directly or indirectly by this document.

Printed: 2003

Publisher

AGG Software

Production

*2003, AGG Software
<http://www.aggsoft.com>*

Table of Contents

Foreword	0
Part 1 Introduction	2
Part 2 Module installation	2
Part 3 Publication parameters setup	3
1 Element's parameters	4
2 Adding elements	5
3 Removing an element	5
4 Window capture	6
5 Changes discard	6
6 Saving changes	6
7 Transmit test	6
Index	0

1 Introduction

Data publication module "Send keystrokes" for program Advanced Serial Data Logger is for data transmit received by program Advanced Serial Data Logger and picked out from data flow by a parser to edited entry fields, belonging to other Window's applications windows. Publication module transmits received data to other Window's applications windows using Windows messages transmit system (keystrokes). With the help of this publication module, entry fields of the pointed by you applications will be filled automatically by data, received from your computer COM port.

Present module has the following peculiarities:

- Can be done simultaneous transmit of several variables, defined on configuration stage. At the same time for every variable can be set it's own transmit parameters, and also value of one variable can be transmitted to several windows;
- Setup ease. At configuration stage to define a window, to which value must be transmitted select the necessary window and entry field in this window and click the mouse, holding key Ctrl;
- All settings are saved at closing Advanced Serial Data Logger and restored automatically at the next program start.
- At closing the window to which data are transmitted, module saves its parameters and at the next opening data transmit is restored.
- Beside data transmit values, key combinations pointed by you can be also transmitted to entry fields, that lets automatically execute command, defined for present application.

2 Module installation

For module installation execute the following actions

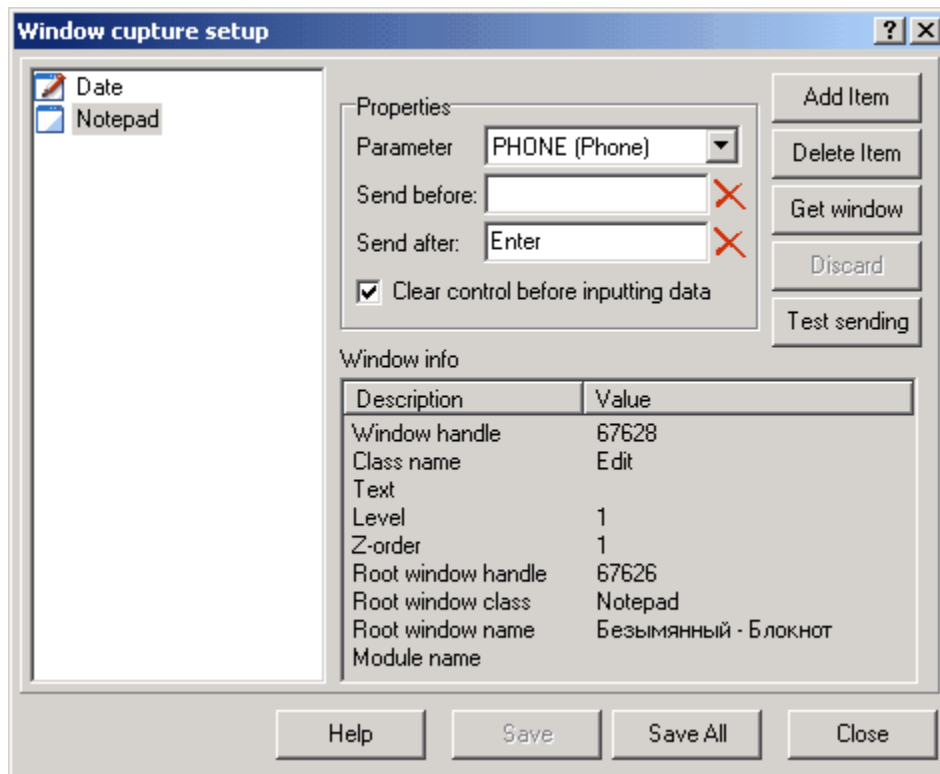
1. Close Advanced Serial Data Logger, if it was run;
2. Copy module distributive file to your hard disk;
3. Run file on execution, clicking twice in Explorer on its name;
4. In the displayed window in the field "Install to" show path for module installation. Module must be installed in folder Plugins, which is placed in folder, where you have installed Advanced Serial Data Logger. On default this is folder X:\Program Files\Advanced Serial Data Logger, where X – your system disk letter;
5. Press button "Install"
6. Restart Advanced Serial Data Logger. In case of lucky installation, module name must be displayed in options, on tab "Modules".

If due to some reasons, You couldn't install publication module, consult technical support service on address support@aggsoft.com and our professionals will be glad to help you.

3 Publication parameters setup

Data transmit parameters setting is executed with the help of setting window, which is called from program Advanced Serial Data Logger.

Transmit parameters setup window



In the left window part is placed setup elements list. At selecting element from the list in the right window part, its corresponding settings are viewed.

- In the field <Parameter name> is pointed parameter name, transmitted by Advanced Serial Data Logger.
- Field <Send before> contains key combination, which will be sent to the window before values transmit.
- Field <Send after> contains key combination, which will be sent to the window after values transmit.
- <Clear control before inputting data> defines if it is necessary to clear window before values transmit
- The list <Window info> contains information about window, to which value will be transmitted.

To change some setup value, input new value to the corresponding field.

To rename element, click right mouse button and select item <Rename item> from context menu.

Adding element

To add a new element press button <Add item>, input element's name. Then input all the

necessary setup values for the new element. After you have shown all data save changes, pressing button <Save>

Window capture

For every element must be defined a window, where to parameter values will be sent. To define a window for an element press button Get window, find the necessary window and click it, holding key Ctrl

Remove an element

To remove an element from the list, mark out the necessary element in the list and press button <Delete item>

Discard changes

If you have made any changes in the element setup, in the list this element will be viewed with icon in the form of a window with pencil. To discard changes for the selected element, press button <Discard>.



Save changes

If you have made any changes in element setup or added a new element, to save changes select the necessary element from the list and press button <Save>. Pressing button <Save all> will be saved all changes for all elements.

Transmit test

After window was defined (with the help of button<Get window>) you can make data transmit test for this window. For that press button <Test sending>. To the selected window will be sent a string "Test data from Advanced Serial Data Logger" and key set given in the field <Send before>and <Send after>

Load from file and save settings to file

Input by you parameters and data transmit settings can be saved to file. For that press button  which is placed under parameters list, and show file name for saving in the displayed window. To load parameters from the earlier saved file, press button  placed under parameters list and select the necessary file in the displayed window.



3.1 Element's parameters

Every element contains parameters set, with the help of which module defines data transmitted by Advanced Serial Data Logger, which window to send.

At setup show the following parameters:

- In the field <**Parameter name**> parameter name is shown, transmitted by Advanced Serial Data Logger.

At data transmit module will search on this name parameter in the transmitted parameters list and transmit its value to the corresponding window.

- Field **<Send before>** contains key combination, which will be sent to the window before values transmit. To input data to this field you can in two modes, adding and editing. To switch between modes press button 
- In add mode pressed key combinations are added to the string end, in edit mode the selected combination is changed to the new one or selected combination is removed, if you press key del or back space. To clean the field press button 
- Field **<Send after>** contains key combination, which will be sent to the field after values transmit. Input and editing in the present field is executed the same way as in the field **<Send before>**.
- **<Clear control before inputting data>** defines if it is necessary to clean window before values transmit
- The list **<Window info>** contains information about window, to which value will be transmitted. To define the necessary window press button **<Get window>**.

3.2 Adding elements

Button **<Add item>** is for adding a new element. Pressing this button in element's navigation list will be displayed new string with entry field. Input element's name and press Enter.

Note: New element's name must be unique. If you input repeated name message with offer to input another name will be displayed.

After you have added a new element you must:

- Input parameter name, with which the present element in the field **<Parameter name>** will be connected
- Select the window, to which values of the shown parameter will be transmitted, pressing button **<Get window>**.

3.3 Removing an element

Button **<Delete item>** serves to remove the selected element. To remove element from the list, select the necessary element in the list , and press button **<Delete item>**.

3.4 Window capture

For every element must be defined a window, to which parameter values will be sent. To define window for an element press button **<Get window>**. Then select the necessary window on desktop, select editing element in it (moving mouse over this element it will be marked out by red rectangle) and click the mouse, holding key Ctrl. Information about selected window will be viewed in the list **<Window info>**.

3.5 Changes discard

Button **<Discard>** lets make discard of the changes for the element. If you have made some changes in the element's settings, in the elements list this element will be viewed with icon in the form of a window with pencil. To discard changes select the necessary element from the list and press button **<Discard>**.

3.6 Saving changes

At pressing button **<Save>** changes for the selected element will be saved.
At pressing button **<Save all>** changes for all elements will be saved.

3.7 Transmit test

Button **<Send keys>** is for selected window test data transmit. After the window have been defined (with the help of **<Get window>** button), You can make data transmit test for this window. For that press button **<Test sending>**. To the selected window will be sent the string "Test data from Advanced Serial Data Logger" and key set shown in the field **<Send keys>**.