



Advanced OPC Data Logger

Trust in Confidence!

PRINTED MANUAL

Advanced OPC Data Logger

© 1999-2017 AGG Software

All rights reserved. No parts of this work may be reproduced in any form or by any means - graphic, electronic, or mechanical, including photocopying, recording, taping, or information storage and retrieval systems - without the written permission of the publisher.

Products that are referred to in this document may be either trademarks and/or registered trademarks of the respective owners. The publisher and the author make no claim to these trademarks.

While every precaution has been taken in the preparation of this document, the publisher and the author assume no responsibility for errors or omissions, or for damages resulting from the use of information contained in this document or from the use of programs and source code that may accompany it. In no event shall the publisher and the author be liable for any loss of profit or any other commercial damage caused or alleged to have been caused directly or indirectly by this document.

Printed: 9/15/2017

Publisher

AGG Software

Production

© 1999-2017 AGG Software

<http://www.aggsoft.com>

Table of Contents

Part 1 Introduction	1
1 About Advanced OPC Data Logger	1
2 Glossary	2
Part 2 License, Registration and technical support	4
1 License	4
2 Limitations	5
3 How to register	6
4 Support	6
Part 3 Installation	6
1 System requirements	6
2 Installation process	6
Part 4 Program use	7
1 Getting started	7
2 Introduction	8
3 Data flow diagram	10
4 Work complete	11
5 Useful advices	11
6 Configuration	12
OPC settings	12
OPC settings.....	12
"Cron" time format.....	21
Additional parameters	23
Data view change.....	23
Date/time configuration.....	24
Name and security	25
Log files	27
Log rotation.....	27
Log file access.....	29
Log deletion.....	30
CSV file logging.....	31
Modules	32
Introduction & setup.....	32
7 Program options	36
Window view	36
Date/time stamp view	38
Protocol and errors handling	39
Service mode on Windows 2000+	40
Configuration.....	40

Part 5 Having problems? 46

1 Program doesn't run or work 46

1 Introduction

1.1 About Advanced OPC Data Logger

OPC technologies

OPC (OLE for Process Control) is a set of universally accepted specifications providing a universal data exchange mechanism in control and management systems. The OPC technology ensures that consumers are independent of the availability or unavailability of drivers or protocols, which makes it possible to choose hardware and software that most completely meets business requirements.

There are two components defined for data exchange in the OPC specification – an OPC client and an OPC server.

An OPC server is a program receiving data in the internal format of a device or a system and converting this data into the OPC format. An OPC server is a source of data for OPC clients.

An OPC client is a program receiving data in the OPC format from OPC servers and converting it into the internal format of a device or a system.

An OPC client interacts with an OPC server using interfaces strictly defined in the specification, which allows any OPC client interact with any OPC server. An OPC server created once allows the device to be connected to a wide range of software (SCADA systems, HMI, etc.) supporting the OPC specification.

The following specifications are currently the most widespread ones:

- OPC Data Access (OPC DA) is the most widespread OPC specification providing real-time data exchange. This module works only with this OPC interface;
- OPC Alarms and Events is a specification allowing you to log process failures, the operator's actions, informational messages;
- OPC Historical Data Access (OPC HDA) provides access to historical data. It is possible to use this specification to represent archived data in a universal format, both in simple visualization systems and in complex SCADA systems.

The program is designed to send/receive data between an OPC server and the program. Data exchange is carried out by server groups and their items specified in the configuration. After data is received, it is processed and grouped depending on the specified configuration and is sent for future processing and export.

Advanced OPC Data Logger custom processes the data to your needs, aggregates and writes real-time data to a text or binary file, MSSQL, MySQL, Access, Oracle or ODBC compatible database, DDE, Excel or to other targets.

What problems can be solved with Advanced OPC Data Logger?

The program creates "a bridge" between OPC servers and databases, Excel and other applications. Our OPC Data Logger is a advanced data collection system that will connect to any industry standard OPC Server and export data as you want. The program can be integrated to your control system and/or work together with your SCADA software.

Key features of Advanced OPC Data Logger is:

- Capability to log data from multiple OPC servers at the same time. Our data logger can collect data from multiple OPC servers simultaneously. Each OPC server may have fully different connection and data export settings;
- Universal. Supports DA1, DA2 OPC interfaces. Automatic tag import capabilities;
- Fast & . Fast multi-threaded, optimized and efficient architecture;
- Variable data receive. Support all data types of OPC servers tags;
- Recovery functions. The program can automatically restore broken connections with an OPC server;
- No limits. The program doesn't have OPC server connection limits or tag limits;
- Extended logging features. Outputs received data a comma separated (CSV) log file. Supports date/time stamping;
- Visualization. The program allows to display all received data in the program window. You can customize data view options;
- Data filters. Allow you filter, format, aggregate your data. You may define simple rules or use powerful regular expressions;
- MS Excel. Data export to ready-to-use MS Excel files;
- Databases support. Exporting data to MSSQL, MySQL, ODBC-compatible database (MS SQL, Oracle, MS Access, dBase and others);
- Real-time export capabilities. Advanced OPC Data Logger can run as a DDE server export OPC data to old applications;
- Program messages logging Writing to a file all program messages, so you may diagnose errors and warnings;
- Plug-ins. Many free plug-in modules that are extending program features;
- Simple, dialog-driven step by step set-up Programming is not required to configure the software to collect data;
- Supporting various operating systems. It runs under all versions starting from Windows 2000, including 32 and 64-bit systems..
- Windows service mode. Unlike most other serial logging applications, Advanced OPC Data Logger can run as a service so that it starts as soon as the operating system starts and doesn't require a user to log in and run it. It will continue to run even as users logon and logoff the workstation.

It is extremely easy to use! The configuration process is fully menu driven and has complete, context sensitive, on-line help. you can easily customize all input to your exact specifications. Once you see how easy it is to use Advanced OPC Data Logger, you will never again take data readings by hand!

Company home page: <http://www.aggsoft.com/>

Software home page: <http://www.aggsoft.com/opc-data-logger.htm>

1.2 Glossary

ASCII - An acronym for American Standard Code for Information Interchange. ASCII files are plain, unformatted text files that are understood by virtually any computer. Windows Notepad and virtually any word processor can read and create ASCII files. ASCII files usually have the extension .TXT (e.g., README.TXT).

Binary File - A file that contains data or program instructions written in ASCII and extended ASCII characters.

Bit - Binary digit in the binary numbering system. Its value can be 0 or 1. In an 8-bit character scheme, it takes 8 bits to make a byte (character) of data.

Bytes - A collection of eight bits that represent a character, letter or punctuation mark.

Cable - Transmission medium of copper wire or optical fiber wrapped in a protective cover.

Client/Server - A networking system in which one or more file servers (Server) provide services; such as network management, application and centralized data storage for workstations (Clients).

DA – data access.

DNS (Domain Name System) - A DNS server lets you locate computers on a network or the Internet (TCP/IP network) by domain name. The DNS server maintains a database of domain names (host names) and their corresponding IP addresses. PC aggsoft's IP address, 198.63.211.24, corresponds to the DNS name www.aggsoft.com.

Internet - A global network of networks used to exchange information using the TCP/IP protocol. It allows for electronic mail and the accessing and retrieval of information from remote sources.

IP, Internet Protocol - The Internet Protocol, usually referred to as the TCP/IP protocol stack, allows computers residing on different networks to connect across gateways on wide-area networks. Each node on an IP network is assigned an IP address, typically expressed as 'xx.xx.xx.xx'.

IP address (Internet Protocol address) - The address of a computer attached to a TCP/IP network. Every client and server station must have a unique IP address. Client workstations have either a permanent address or one that is dynamically assigned to them each dial-up session. IP addresses are written as four sets of numbers separated by periods; for example, 198.63.211.24.

LAN (Local Area Network) - A network connecting computers in a relatively small area such as a building.

NIC, Network Interface Card - A card containing the circuitry necessary to connect a computer to a particular network media. Typically, the NIC plugs into the computer's accessory bus, (PCI, USB, etc.) and provides a network connection such as 10baseFL (fiber ethernet), thin-net, AUI, etc.

OPC (OLE for Process Control) – a set of universally accepted specifications providing a universal data exchange mechanism in control and management systems.

OPC Alarms and Events - the OPC interface for access to alarm and event data.

OPC Data Access - the OPC interface for access to real-time data.

OPC DA - see OPC Data Access.

OPC Historical Data Access - the OPC interface for access to archived data.

OPC HDA - see OPC Historical Data Access.

PC - abbreviation for a Personal Computer.

Ports - A connection point for a cable.

Protocol -A formal description of a set of rules and conventions that govern how devices on a network exchange information.

TCP/IP, Transport Control Protocol / Internet Protocol - TCP and IP are communications protocols, that is, structured languages in which data is communicated between one process and another, and between one network and another. TCP/IP is implemented in a multi-level layered structure.

TCP/IP is the 'glue' that ties together the many heterogeneous networks that make up the Internet.

2 License, Registration and technical support

2.1 License

Copyright © 1999-2017 AGG Software.
All Rights Reserved

SOFTWARE LICENSE

Trial Limited Version

The trial limited version of this software may be used for evaluation purposes at the user's own risk for a trial period. At the end of the trial period, the user must either purchase a license to continue using the software, or remove it from his/her system.

The trial limited version may be freely distributed, provided the distribution package is not modified. No person or company may charge a fee for the distribution of Advanced OPC Data Logger without written permission from the copyright holder.

Licensed Version

On payment of the appropriate license fee, the user is granted a non-exclusive license to use Advanced OPC Data Logger on one computer (i.e. a single CPU), for any legal purpose, at a time. The registered software may not be rented or leased, but may be permanently transferred, if the person receiving it agrees to terms of this license. If the software is an update, the transfer must include the update and all previous versions.

Registered customer are entitled to free updates during one year from the date of purchase. It means that during one year you can download and install the latest registered versions of Advanced OPC Data Logger from our site. If you don't want to purchase an updates, you can use the program forever; it will never expire, but you won't be able to use the latest version. If you purchased the software more than one year ago, you are no longer entitled to free upgrade and technical support; however, you can purchase an updates to the latest version at a special, greatly discounted price, and this updates will allow you to have free updates and technical support for another year. The type of update license must match the type of your existing license.

Whilst every care has been taken in the construction and testing of this software, it is supplied subject to the condition that the user undertakes to evaluate the suitability of the control for his/her purposes. AGG Software makes no representation of the software's suitability for any purpose, and the user agrees that AGG Software has no responsibility for any loss or damage occasioned by the use of this software.

TO THE MAXIMUM EXTENT PERMITTED BY APPLICABLE LAW, THE SOFTWARE AND DOCUMENTATION ARE PROVIDED "AS IS" AND AGG SOFTWARE DISCLAIMS ALL OTHER WARRANTIES AND CONDITIONS, EITHER EXPRESS OR IMPLIED, INCLUDING, BUT NOT LIMITED TO, IMPLIED WARRANTIES OF MERCHANTABILITY, FITNESS FOR A PARTICULAR PURPOSE, CONFORMANCE WITH DESCRIPTION, TITLE AND NON-INFRINGEMENT OF THIRD PARTY RIGHTS.

TO THE MAXIMUM EXTENT PERMITTED BY APPLICABLE LAW, IN NO EVENT SHALL AGG SOFTWARE BE LIABLE FOR ANY INDIRECT, INCIDENTAL, CONSEQUENTIAL, SPECIAL OR EXEMPLARY DAMAGES OR LOST PROFITS WHATSOEVER (INCLUDING, WITHOUT LIMITATION, DAMAGES FOR LOSS OF BUSINESS PROFITS, BUSINESS INTERRUPTION, LOSS OF BUSINESS INFORMATION, OR ANY OTHER PECUNIARY LOSS) ARISING OUT OF THE USE OR INABILITY TO USE THE SOFTWARE PRODUCT, EVEN IF AGG SOFTWARE HAS BEEN ADVISED OF THE POSSIBILITY OF SUCH DAMAGES. IN ANY CASE, AGG SOFTWARE'S CUMULATIVE AND ENTIRE LIABILITY TO YOU OR ANY OTHER PARTY FOR ANY LOSS OR DAMAGES RESULTING FROM ANY CLAIMS, DEMANDS OR ACTIONS ARISING OUT OF OR RELATING TO THIS AGREEMENT SHALL NOT EXCEED THE PURCHASE PRICE PAID FOR THIS LICENSE.

Should any term of these terms and conditions be declared void or unenforceable by any court of competent jurisdiction, such declaration shall have no effect on the remaining terms hereof.

If you do not agree to these conditions you should not install this software.

2.2 Limitations

Program is distributed on shareware terms. This means limited and unavailable secondary program possibilities, which become valuable or available after program registration. To register the program read [here](#) ⁶.

In trial version of our program are the following limits:

- Trial period is limited by 21 days. After that time program won't work until it is registered.
- Continuous program work time is limited. After set period a message will be displayed and program stops its work;
- All data export modules can handle first 100 records only;

2.3 How to register

The program is distributed on shareware terms. This signifies limited or unavailable many features of the program, getting of full value or available after program registration.

If you'd like to be a registered user, to get information about the release of new versions, to use technical support and, at last, to get access to disabled functions of the program, register your copy. For registration, please, read [license agreement](#)⁴.

If you want to buy a program through the Internet visit the [registration page](#) of our site. On this page you can get the newest information about the registration process, and also find an order link. After you've have the form of order registration. Enter your personal information and choose the most convenient payment method for you. Further, you'll get notification and follow the notes in it.

More information about services, registration documents, payment means you can get on our [registration page](#) of our site.

2.4 Support

Technical questions	support@aggsoft.com
Common questions	info@aggsoft.com
Sales questions	sales@aggsoft.com

3 Installation

3.1 System requirements

Windows 2000 Professional - Windows 10, including x64 and x86 OS, Workstation and Server OS.

3.2 Installation process

If any beta-version was installed on your computer, remove it.

Quit of the working Advanced OPC Data Logger on installation time.

Run an installation file.

By default, Advanced OPC Data Logger will be installed to the directory "C:\Programs Files\Advanced OPC Data Logger" or "C:\Programs Files (x86)\Advanced OPC Data Logger" of your system disk, but you can change this path.

In the standard distributive of Advanced OPC Data Logger are no additional modules files, which you can download from our [site](#).

4 Program use

4.1 Getting started

After you have successfully installed Advanced OPC Data Logger, use the following simple steps to configure and run it.

Open the Advanced OPC Data Logger program from the Start Menu.

At program run you get into the main program window (fig. 1.1.1), main elements of which are the main menu, the data window, the program messages list and the status bar. In the data window will be viewed formatted data processing. In the messages list are logged information, warning and error messages. The status bar shows current state of the selected data source, interface error messages and a number of bytes processed. Through the main menu, placed above the data window, you can get access to [program settings](#) ("Options/Program settings...") and from the menu "File" (fig. 1.1.2) can open a current log-file or clean the data window.

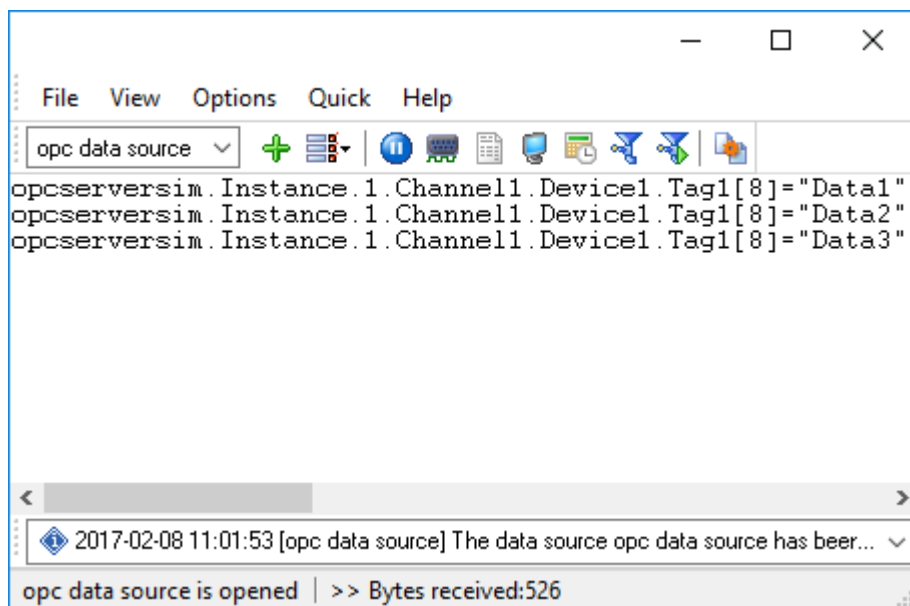


Fig. 1.1.1 Main program window

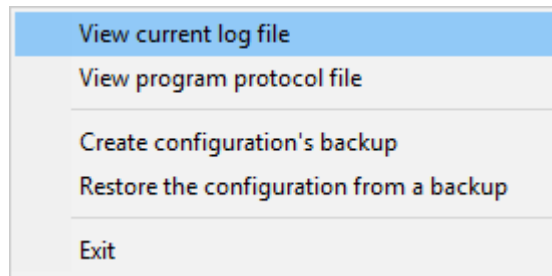


Fig. 1.1.2. "File" menu item

By default (after installation), the program has not any data sources configured. If the list of data sources on the toolbar is empty, then the program will ask you to add new configuration. Otherwise, the program will fill in the list of data sources and try to start logging of data sources configured. Yes, of course, all your settings are being saved while exiting from the program and loaded while the program start.

Set-Up is as Easy as 1-2-3

Step 1. Configure one or more data sources.

Click the "Add configuration" button on the toolbar with big green plus and choose . The tab of the "Configuration options" dialog lets you configure your settings.

Step 2. Configure log file.

Select the "Log file" header in the configuration dialog window and enable logging for a necessary data direction.

Step 3. Define how you want the OPC data to be filtered and exported .

The "Plug-in" button on the toolbar in the main window or "Modules" tab in the dialog window lets you specify how to parse, filter and format your data to the fit the exact format required by your application. It also lets you pre-define automatic output strings to be sent to an external device.

Now, the program process and exports data from one or multiple data sources.

4.2 Introduction

Advanced OPC Data Logger can save data to a log file(s) without any changes (i.e. create raw binary log files) or write to log files depending on the parser module selected. In the first case you can view the log file with any hex editor and use this data for further analysis and remaking. In the second case you can view data with any text editor. You can find more information about log files in the "[Log rotation](#)" chapter.

You can watch the data in the data window ([fig. 1.1.1](#)). The data view is fully customizable. You can watch data in decimal, hexadecimal or your own format. How to customize data view you can

read in the "[Data view](#)^[23]" chapter and how to customize program view you can read in the "[Window view](#)^[36]" chapter.

The data can be exported or transferred to one or more targets. Most simple way is to configure the log file rotation. But it is small part of all features of Advanced OPC Data Logger. Advanced OPC Data Logger has many [additional modules](#)^[32] (so-called plug-ins), that are appreciably extending possibilities of the logging software. You can download and install any module supported. Most modules are free of charge for our customers. How to install and configure modules you can read in the "[Modules](#)^[32]" chapter.

The program and their plug-ins generates many messages and writes they to the list in the main window ([fig. 1.1.1](#)^[7]) and a protocol file, that you can use for administration of the software. You can configure types of system messages. More information about it you can read in the "[Protocol and errors handling](#)^[39]" chapter.

4.3 Data flow diagram

This diagram may help you to understand the flow of data within our software and a place of each module. All modules are described in following chapters.

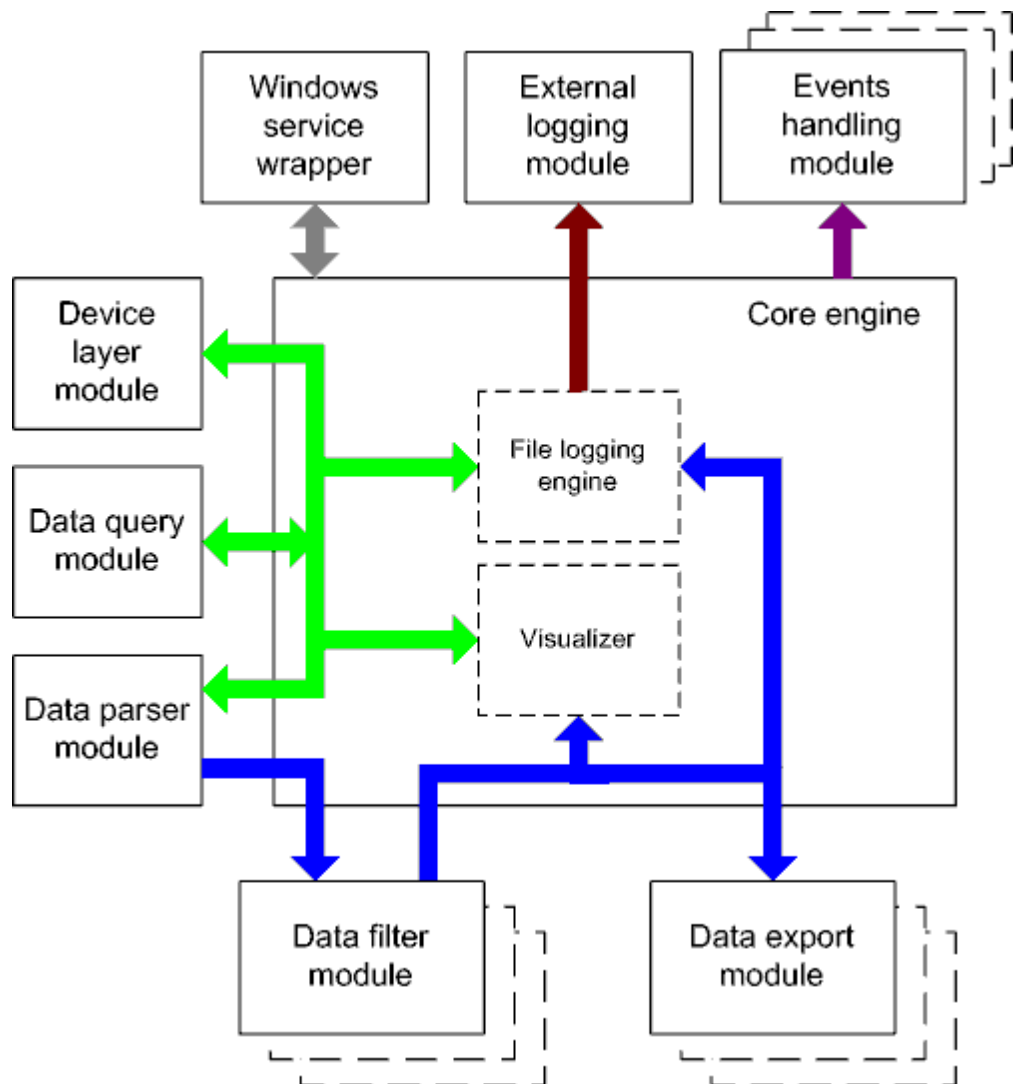


Fig. 1.2.1 Data flow diagram

History:

■ - Binary flow of data (RAW, unformatted data).

■ - Parsed data (formatted data). The data flow was been separated to data packets and variables. Each data packet can be interpreted as a row, and each variable can be interpreted as a column.

Wires with other colors mark other relations with unstructured data flow.

4.4 Work complete

After program work stop all program settings will be saved in Windows registry. Opened for reading/writing data sources will be automatically closed and will be available for other applications.

4.5 Useful advices

1. Look through hint helps on all window elements - this will help you to get a picture of this element's function.

2. You can change all program settings without restarting the program. To transfer settings to another computer you can do the following:

1. Create a configuration backup from the "File" menu and restore it using the same menu.
2. Or export the registry node with all program settings. Start regedit.exe and export the following registry node:

on Windows x64

HKEY_LOCAL_MACHINE\SOFTWARE\Wow6432Node\AGG Software\Advanced OPC Data Logger

on Windows x32

HKEY_LOCAL_MACHINE\SOFTWARE\AGG Software\Advanced OPC Data Logger

3. On another computer import settings to the Windows registry.

Many main window elements have "hot" keys for quick access to its functions.

- Ctrl+S - analogues to click on "Start/Pause" button on toolbar.
- Ctrl+C - analogues to click on "Clear" button on toolbar.
- Ctrl+P - call options window with configuration settings.
- Ctrl+L - call options window with log file settings.
- With Ctrl+W hot key You can configure window view.
- Ctrl+R - show window with program's restart settings.
- Ctrl+E - Windows NT/2000/XP service settings is available here.
- Ctrl+M - here you can configure queries, parsers and other modules.

4. You can look at the summary statistic that contains summary about sent and received data, created files etc (View - Statistics)

5. You can save program settings to an INI file. It may help to install and use several copies of the program. You can make your choice from the "Options" menu.

6. The program window can display only last 10 message. The full program log file (if activated) you can open using the "File - View program protocol file" menu item.

4.6 Configuration

4.6.1 OPC settings

4.6.1.1 OPC settings

How it works

After the program is loaded, it analyzes the configuration tree and items are added to the internal structures of the data program during this analysis. The existence of items on the server is also checked during this analysis. This process may take from several seconds to several minutes depending on the OPC server. If an item does not exist, the corresponding message is added to the log and this item will be highlighted in red when you open the configuration. If the OPC server is sending data, the program will immediately start receiving data from it provided that the configuration tree is not empty. Also, the program will send data received from the core to OPC servers for the corresponding items.

The following happens when data is being received from an OPC server:

1. If the **"Wait till all items are updated"** checkbox is selected in the group parameters, the item update flag is set first and the value of the item is changed. Then the items of the group the item (whose data is received) belongs to are checked for value updates. If all items in the group have been updated, the data is sent to data export module. The **"Export valid values only"** and **"Don't export NULL values"** checkboxes are taken into account during export, i.e. if an item has a valid value and the checkbox is selected or if it is not selected, the following check is performed: if the value of the item is different from NULL and the checkbox is selected or if the checkbox is not selected, the item is exported into the core provided it exists. After the data is exported, the item update flag is cleared.
2. If the **"Wait till all items are updated"** checkbox is not selected in the group parameters, items are exported. The **"Export valid values only"** and **"Don't export NULL values"** checkboxes are taken into account during export, i.e. if an item has a valid value and the checkbox is selected or if it is not selected, the following check is performed: if the value of the item is different from NULL and the checkbox is selected or if the checkbox is not selected, the item is exported into the core provided it exists.

When data is received, the server name will be added to the item name if the "Add server name to item name" checkbox is selected in the group properties. The <;>, <">, <[>, <]> characters in server and item names are replaced with the <_> character. If an item is of the string type, the <\>, <"> characters are replaced with <\\>, <\">, if a character has a code within the range \$00..\$1F, <\x> characters are added before the character.

The following happens when data is being sent to an OPC server (e.g. from a data query module):

1. The data is copied to the temporary buffer;
2. A line is singled out from the temporary buffer. Lines can be separated by the <CR> or <CR+LF> characters;
3. An item is singled out from the line. Items are separated by the <;> character;
4. The item is decoded and, as a result, you get the server name (may be absent), the item name, the item type (may be absent), the item value. If no item type is specified, it is determined automatically according to the following rules: if the value starts from quotation marks, the data type is "string", or if the value can be converted into an integer without any errors, the type is

- "integer", or of the value can be converted into a fraction without any errors, the type is "double". In all other cases, the program interprets the value as being the "string" data type;
5. The item is sent to the core. If no server name is specified, the value is sent to all items specified in the configuration and having the corresponding item name.

Groups, servers and variables

Data can be sent and received at any time. The "OPC groups, servers and variables" tree is used for that. For the program to be able to receive/send data, you should add at least one group with one item. The tree allows you to add, remove, edit, view and assign other names to items and also move items and groups.

Select the "OPC settings" tab in the settings dialog box and you will see the group and item tree on the screen. It is empty by default.

OPC Settings

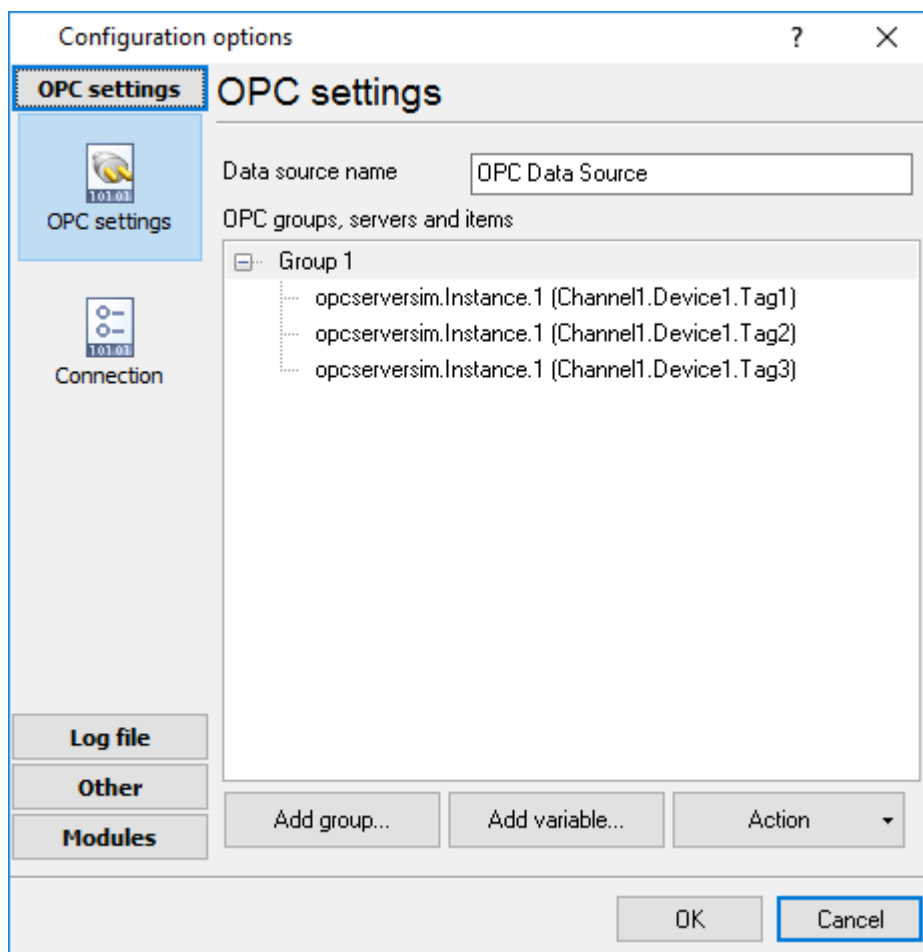


Fig. 2.4.1. OPC settings

Data source name – the field contains any name that will denote the operations performed with OPC servers.

OPC groups, servers and variables – the tree contains groups of servers and variables used to send/receive data.

Action – the button allows you to add groups and items from OPC servers to the configuration, remove groups and items, assign new names to items, view and edit data, move groups and items up/down the tree. You can right-click the tree instead of this button and you will see the same menu that you see when you click the "**Action**" button.

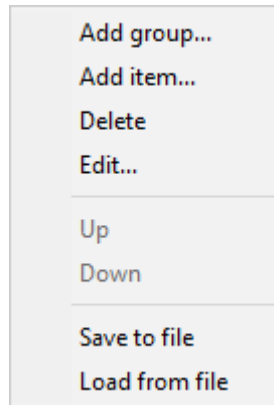


Fig. 2.4.2 The action menu after a right click on a group

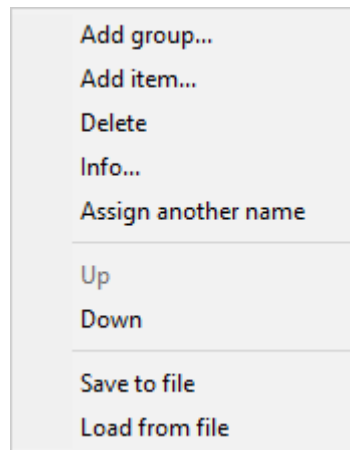


Fig. 2.4.3 The action menu after a right click on an item

Adding a group

Click the "**Action**" button or right-click the "OPC groups, servers and variables" tree and you will see the action menu (Fig. 2.4.2 or Fig. 2.4.3). Select the "Add group..." item and you will see the Group properties dialog box on the screen (Fig. 2.4.4).

Group properties

Name:

Update rate (msec): Dead band (%):

Active Export valid values only

Wait till all items are updated Export date/time stamp

Add server name to item name Timestamps in local time

Export whole group Export item quality

Export one row for all changed items Export item name

Export at fixed interval Don't export NULL values

Export at:

Use update rate

Time of day

Time using Unix Cron schedule

WD: M: D: ?

H: MIN: SEC:

OK Cancel

Fig. 2.4.4 Group properties

Name – the field contains the name of the group. The name may contain any characters. By default, it is Group XXX, where XXX is the number of the group.

Update rate (msec) – the field contains the update rate of items in the group when they are read from the OPC server. The value is specified in milliseconds. By default, 1000 milliseconds, i.e. 1 second.

Dead band (%) – the field contains the value of the dead band in percent. The default is 0 percent.

Active – the checkbox defines whether the group is active. If it is selected, items from this group will be exported (items will be read from servers), if it is not selected, they will not be exported (items will not be exported). By default, the checkbox is selected.

Export valid values only – the checkbox enabled/disabled exporting only valid values. If it is selected, only those items in the group whose value is OPC_QUALITY_GOOD will be exported, if it is not selected, the quality of the item value is not taken into account. By default, the checkbox is selected.

Export date/time stamp – the checkbox enabled/disabled exporting of update date and time of an OPC tag.

Export whole group - if this checkbox enabled then the program will export all tags in the group at once, otherwise each tag in the group will be export separately: one tag on a new line.

Timestamp in local time – if this checkbox enabled then the program will export the timestamp in local time zone. Otherwise the UTC time zone will be used.

Export item name, Export item quality – these options are available if the "Export whole group" option is disabled. In this case the program will add two special items to the output that will contain the tag name and tag quality. For example:

```
ITEM_NAME[8]="opcserver.sim.Instance.1.T1";ITEM_VALUE[3]=1606521099;ITEM_QUALITY[3]=192
ITEM_NAME[8]="opcserver.sim.Instance.1.T2";ITEM_VALUE[3]=1170485188;ITEM_QUALITY[3]=192
ITEM_NAME[8]="opcserver.sim.Instance.1.Val1";ITEM_VALUE[5]=4958.32440443337;ITEM_QUALITY[3]=
ITEM_NAME[8]="opcserver.sim.Instance.1.Val2";ITEM_VALUE[5]=4970.36790242419;ITEM_QUALITY[3]=
```

Export at fixed interval – if this checkbox enabled then the program will export all tags in the group periodically, even through a tag value isn't changed. You may export data by fixed interval, at a fixed time or define a flexible schedule using the "Cron" time format.

Add server name to the item name – if this checkbox enabled then the program will append a server name before the tag name. It allows to distinguish identical tags from different servers.

Don't export NULL value – the checkbox allows you not to export items with null values. If it is selected, items in the group that have a null value will not be exported, if it is not selected, the null value of an item is not taken into account. By default, the checkbox is selected.

Wait till all items are updated – the checkbox enables/disables waiting till all items in the group are updated. If it is selected, items in this group will be exported only when all items in the group are updated (the "Export valid values only" and "Don't export NULL values" checkboxes are taken into account during export), if it is not selected, all items will be exported taking into account the "Export valid values only" and "Don't export NULL values" checkboxes. By default, the checkbox is selected.

Note: See the paragraph "[How it works](#)" for more details about the export algorithm.

After you specify the group properties, click the "OK" button to save the properties or the "Cancel" button to cancel it. The dialog box will be closed and a new group will appear in the tree.

Adding an item

Click the "Action" button or right-click the "OPC groups, servers and variables" tree and you will see the action menu (Fig. 2.4.2 or Fig. 2.4.3). Select the "Add item..." item and you will see the Item properties dialog box on the screen (Fig. 2.4.5).

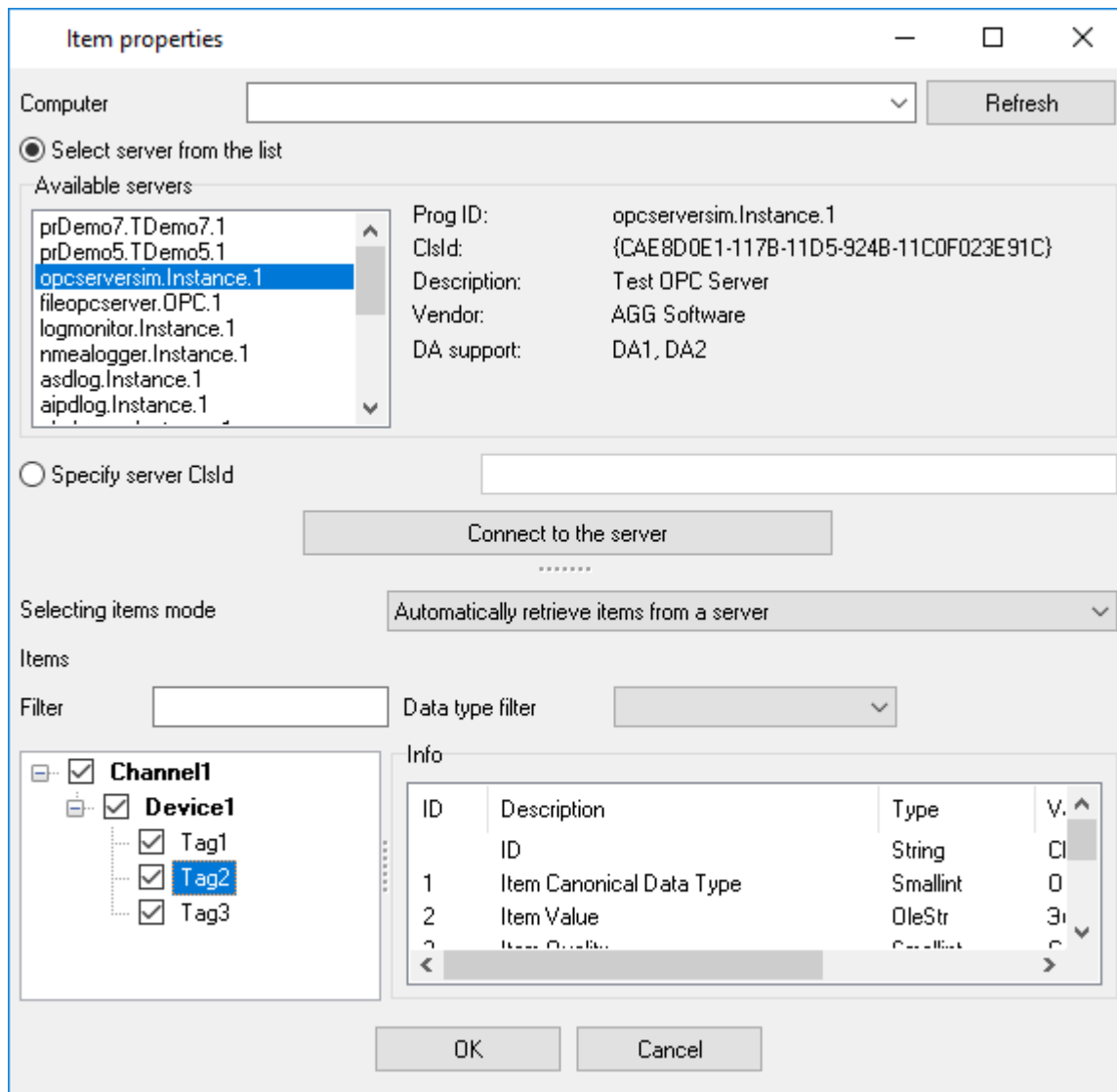


Fig. 2.4.5 Automatic mode item properties

Servers – the list contains the list of available OPC servers.

Info – the group shows brief information about the selected OPC server.

Prog ID – the field shows the program identifier (the name of the program).

Description – the fields shows the brief description of the server.

DA support – the fields shows the supported DA.

Vendor – the field shows the name of the vendor.

Connect – the button connects the program to the server and after that items (if there are any on the server) appear in the "Items" list. It is also possible to connect to the server with a double click on the server selected in the "Servers" list.

Selecting items mode – the list allows you to select one of the modes for item selection/input. There are two modes available: Automatically retrieve items from a server and Manual mode.

Items – the list contains items available on the selected server. There is a checkbox next to each item. It enables/disables adding the corresponding item to the tree (Fig. 2.4.1) after you click the "OK" button and close the dialog box. Once a connection is established to the server, the checkboxes of all items are selected. You can select or clear a checkbox by clicking it. Also, you can use the menu (Fig. 2.4.6) opened with a right click on the list.

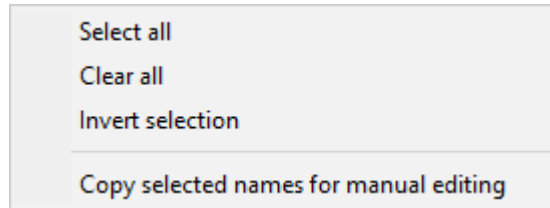


Fig. 2.4.6 Item menu

Select all (Fig. 2.4.6) – select the checkboxes of all items.

Clear all (Fig. 2.4.6) – clear the checkboxes of all items.

Invert selection (Fig. 2.4.6) – invert the checkboxes of all items.

Info – the group shows information about the selected item.

ID – the column shows the item identifier. It cannot be edited.

Description – the column shows the brief description of the item. It cannot be edited.

Type – the column shows the item type. It cannot be edited.

Value – the column shows the item value. It cannot be edited.

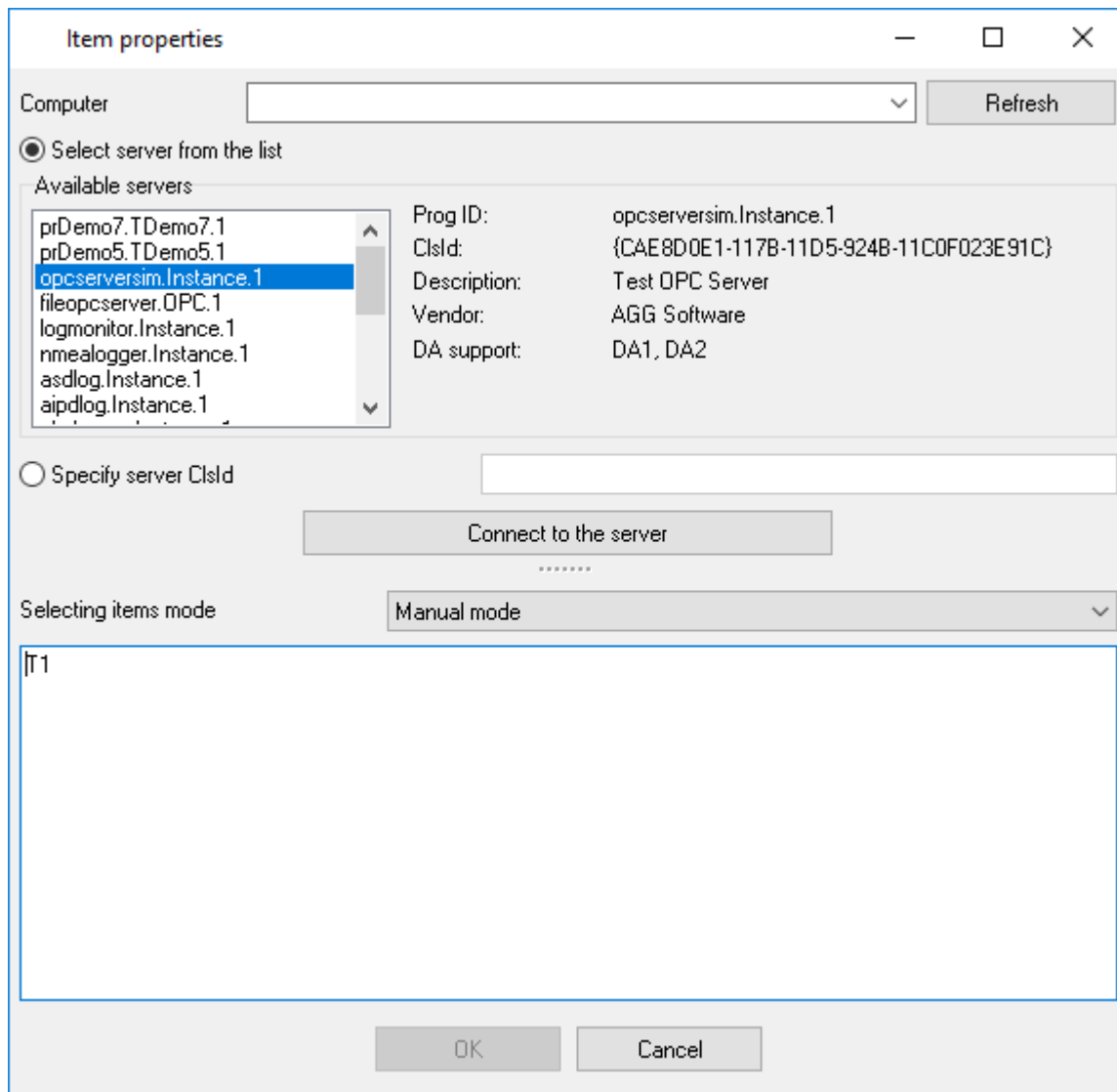


Fig. 2.4.7 Manual mode item properties

Items – the text field allows you to type items manually. The number of items is unlimited.

Removing an item:

Click the "Action" button or right-click the "OPC groups, servers and variables" tree and you will see the action menu (Fig. 2.4.2 or Fig. 2.4.3). Select the "**Delete**" menu item and you will see the confirmation dialog box on the screen. Click the "Yes" button in this dialog box and the group or the item will be removed from the tree after that. If you change your mind, click the "No" button. The "Delete" menu item is not available when the tree is empty.

Editing a group:

Click the "Action" button or right-click the "OPC groups, servers and variables" tree and you will see the action menu (Fig. 2.4.2 or Fig. 2.4.3). Select the "**Edit...**" menu item and you will see the Group properties dialog box on the screen (Fig. 2.4.4).

Note: Note that a group must be selected in the tree, otherwise you will not see this menu item.

See "Adding groups:" for the description of group properties.

Note: See the paragraph "[How it works](#) ^[12]" for more details about the export algorithm.

After you specify the group properties, click the "OK" button to save the properties or the "Cancel" button to cancel it.

Viewing information about an item:

Click the "Action" button or right-click the "OPC groups, servers and variables" tree and you will see the action menu (Fig. 2.4.2 or Fig. 2.4.3). Select the "Info..." menu item and you will see the Item properties dialog box on the screen

All item properties except the "Info" group will be unavailable. Click the "Close" button after you view the information.

Note: Note that an item must be selected in the tree, otherwise you will not see this menu item. See "Adding an item:" for the description of item properties.

Assigning another name to an item:

Click the "Action" button or right-click the "OPC groups, servers and variables" tree and you will see the action menu (Fig. 2.4.2 or Fig. 2.4.3). Select the "Assign another name..." menu item and you will see the dialog box where you can type a new name for the item. Type a new name for the item and click the "OK" button – the new name of the item will appear in the tree. Note that the name must differ from those already existing in the tree, otherwise you will see the corresponding message on the screen and the item will not be renamed.

Note 1: It is this assigned item name that is used during export/import, not the one in the tree. By default, the assigned name has the same value as the value selected when the item was added.

Note 2: Note that an item must be selected in the tree, otherwise you will not see this menu item.

Moving a group or an item up:

Click the "Action" button or right-click the "OPC groups, servers and variables" tree and you will see the action menu (Fig. 2.4.2 or Fig. 2.4.3). Select the "**Up**" menu item and the group or the item will move one position up. If a group or an item is the only one or if there are no groups and items at all, the menu item will be unavailable.

Moving a group or an item down:

Click the "Action" button or right-click the "OPC groups, servers and variables" tree and you will see the action menu (Fig. 2.4.2 or Fig. 2.4.3). Select the "**Down**" menu item and the group or the item will move one position down. If a group or an item is the only one or if there are no groups and items at all, the menu item will be unavailable.

Note: you can add any number of groups and items with different parameters.

4.6.1.2 "Cron" time format

The cron format is a simple yet powerful way to describe time and operation periodicity. The traditional (inherited from the Unix world) cron format consists of five fields separated with spaces:

<Second> <Minutes> <Hours> <Month days> <Months> <Weekdays>

Any of the five fields can contain the * (asterisk) character as its value. It stands for the entire range of possible values. For example, every minute, every hours and so on. You can also use the "nonstandard" ? character in the first four fields. See its description below.

Any field can contain a list of comma-separated values (for example, 1,3,7) or an interval (subrange) of values defined by a hyphen (for example, 1-5).

You can use the / character after the asterisk (*) character or after an interval to specify the value increment. For example, you can use 0-23/2 in the "Hours" field to specify that the operation should be carried out every two hours (old version analog: 0,2,4,6,8,10,12,14,16,18,20,22). The value */4 in the "Minutes" field means that the operations must be carried out every four minutes. 1-30/3 is the same as 1,4,7,10,13,16,19,22,25,28.

You can use three-word abbreviations in the "Months" (Jan, Feb, ... , Dec) and "Weekdays" (Mon, Tue, ... , Sun) fields instead of numbers.

Examples

Note: the <Second> field equal 0 in all examples

Format	Description
* * * * *	every minute
59 23 31 12 5	one minute before the end of the year if the last day in the year is Friday
59 23 31 Dec Fri	one minute before the end of the year if the last day in the year is Friday (one more variant)
45 17 7 6 *	every year on the 7th of June at 17:45
0,15,30,45 0,6,12,18 1,15,31 * 1-5 *	00:00, 00:15, 00:30, 00:45, 06:00, 06:15, 06:30, 06:45, 12:00, 12:15, 12:30, 12:45, 18:00, 18:15, 18:30, 18:45, if it is the 1st, 15th or 31st of any month and only on workdays
*/15 */6 1,15,31 * 1-5	00:00, 00:15, 00:30, 00:45, 06:00, 06:15, 06:30, 06:45, 12:00, 12:15, 12:30, 12:45, 18:00, 18:15, 18:30, 18:45, if it is the 1st, 15th or 31st of any month and only on workdays (one more variant)
0 12 * * 1-5 (0 12 * * Mon-Fri)	at noon on workdays
* * * 1,3,5,7,9,11 *	every minute in January, March, May, July, September and November
1,2,3,5,20-25,30-35,59 23 31 12 *	on the last day in the year at 23:01, 23:02, 23:03, 23:05, 23:20, 23:21, 23:22, 23:23, 23:24, 23:25, 23:30, 23:31, 23:32, 23:33, 23:34, 23:35, 23:59

0 9 1-7 * 1	on the first Monday of every month at 9 in the morning
0 0 1 * *	at midnight on the 1st of every month
* 0-11 * *	every minute till noon
* * * 1,2,3 *	every minute in January, February and March
* * * Jan, Feb, Mar *	every minute in January, February and March
0 0 * * *	every day at midnight
0 0 * * 3	every Wednesday at midnight

You can use the nonstandard "?" character in the first four fields of the cron format. It stands for the start time, i.e. the question mark will be replaced with the start time during the field processing: minute for the minute field, hour for the hours field, month day for the month day field and month for the month field.

For example, if you specify:

? ? * * *

the task will be run at the moment of startup and will continue being run at the same time (if the user does not restart the program again, of course) – the question marks are replaced with the time the program was started at. For example, if you start the program at 8:25, the questions marks will be replaced like this:

25 8 * * * *

Here are some more examples:

- ? ? ? ? * - run only at startup;
- ? * * * * - run at startup (for example, at 10:15) and continue being run in exactly one hour: at 11:15, 12:15, 13:15 and so on;
- * ? * * * - run every minute during the startup hour;
- */5 ? * * * - run on the next day (if the cron is not restarted) at the same hour every minute and so on every day, once in five minutes, during the startup hour.

4.6.2 Additional parameters

4.6.2.1 Data view change

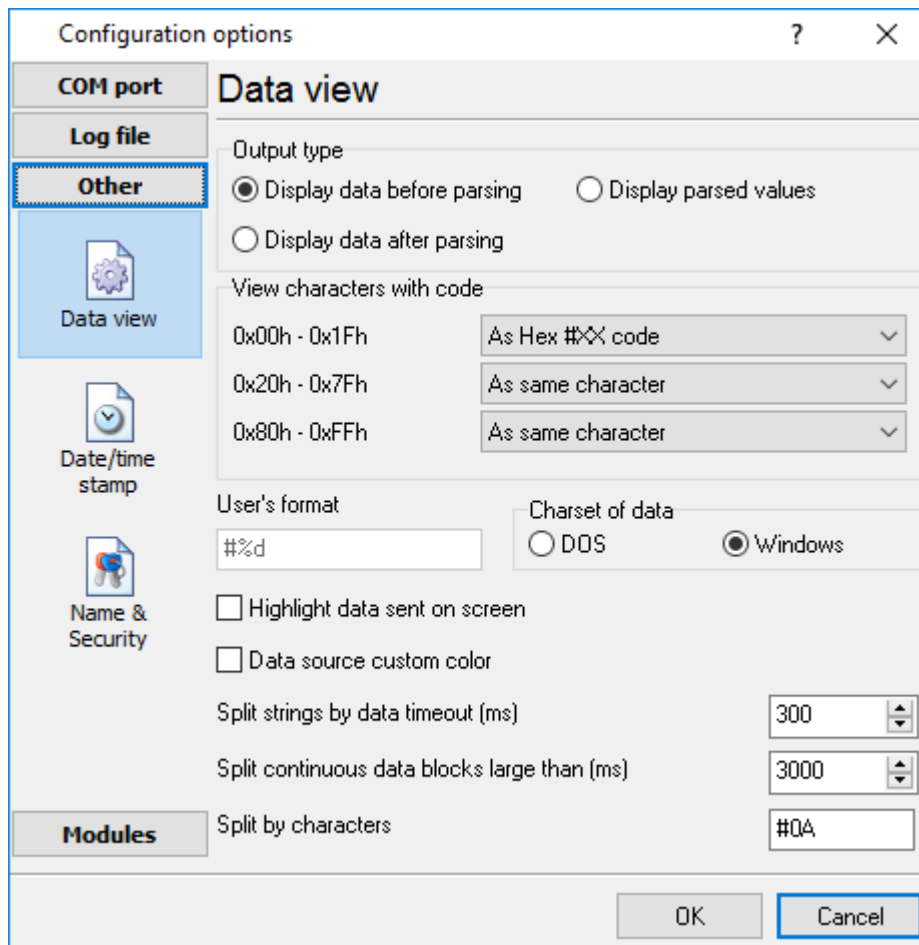


Fig. 3.1.1. Data view

Data view settings, that can be configured on the "Data view" tab:

1. **View characters with code** - the program can interpret and decode bytes as characters. You can select decoding mode for each characters range. If the range doesn't have the corresponding character, that's why these data can be displayed only in hexadecimal and decimal code.
2. You can set up data byte display **users format**. The directive %d shows to display an decimal code, the directive %x - hex code. You can set any framing characters before/after the user format.
3. **Highlight data sent on screen** - string with sent data will be highlighted by the set color.
4. **Character set** - allows to define the character set of incoming data. Windows - Windows ANSI character set, DOS - OEM character set.
5. **Data source custom color** - if you've created several configurations then you can define a custom color for each data source that allows to distinguish data flows on the "All data" page in the main window.

6. **Split strings by data timeout** - this option allows to visually split data packets in the program window. A data packets that will be received after the specified interval will be showed on a new line. If this value is set to 0 then data packets will not split.
7. **Split continuous data blocks large than** - this option allows to visually split continuous data flow in the program window. The program will show data from a new line every specified interval.
8. **Split by characters** - this option allows to visually split continuous data flow in the program window using the specified symbols. For example (fig. 3.1.1), the program will use a character with the 0Ah hexadecimal code that is equal to the "LF" ASCII code.

4.6.2.2 Date/time configuration

This group of options (fig. 3.2.1) allows you to configure how data and time stamps appear in the log file and on the screen. You can configure the stamp format in the [program options](#) [38].

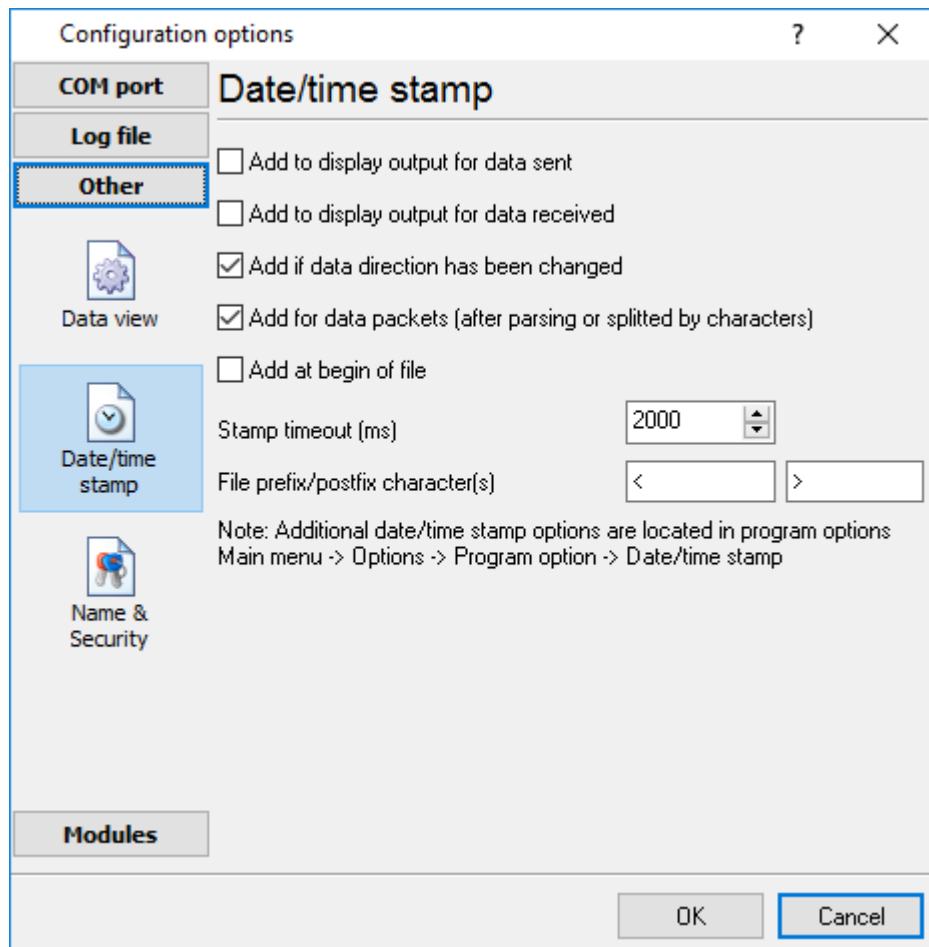


Fig. 3.2.1 Time stamp configuration

Add to display output for data sent - the time stamp will be added for the sent data displayed on the screen. The stamp will be added according to the timeout (if the data flow is uninterrupted) or when a data packet is sent.

Add to display output for data received - the same but for the received data.

Add if data direction has been changed - if the program is sending and receiving data, the time stamp will be also added when the data transfer direction changes (sending/receiving).

Add for data packets - if the data is displayed after it is processed, the stamp will be added to each processed data packet.

Add at begin of file - the stamp will be added at the beginning of every new log file.

Stamp timeout - if the data flow is uninterrupted, the stamp will be added regularly at the interval specified in milliseconds.

File prefix/postfix character(s) - the program will use these characters instead of those specified in the [program options](#)^[38] while writing data to a file. For example, it allows you to add the new line character or another sequence of characters before or after the stamp. Example: >#0D#0A

4.6.2.3 Name and security

This group of options (fig. 3.3.1) allows you to configure the following parameters:

Friendly name - this name will be added before the port number or the data source in the drop-down list in the main window of the program. It allows you to describe the data source.

Start logging automatically - if this option is enabled, the program will start receiving and logging data automatically when it is launched.

The "Security" option group allows you to protect user operations in this particular configuration with a password. You can specify advanced security options applied to the entire program in the [program options](#)^[43].

Ask password before start and stop - the password will be required when the user clicks the "Start/Pause" button in the main window of the program.

Ask password before configuration edit - the password will be required when the user tries to open the Configuration options dialog box.



Fig. 3.3.1. Name and security

4.6.3 Log files

4.6.3.1 Log rotation

The main function of Advanced OPC Data Logger is logging data to a file (so-called, log file). The "Log rotation" tab has a rich set of options for it. (fig. 4.1.1).

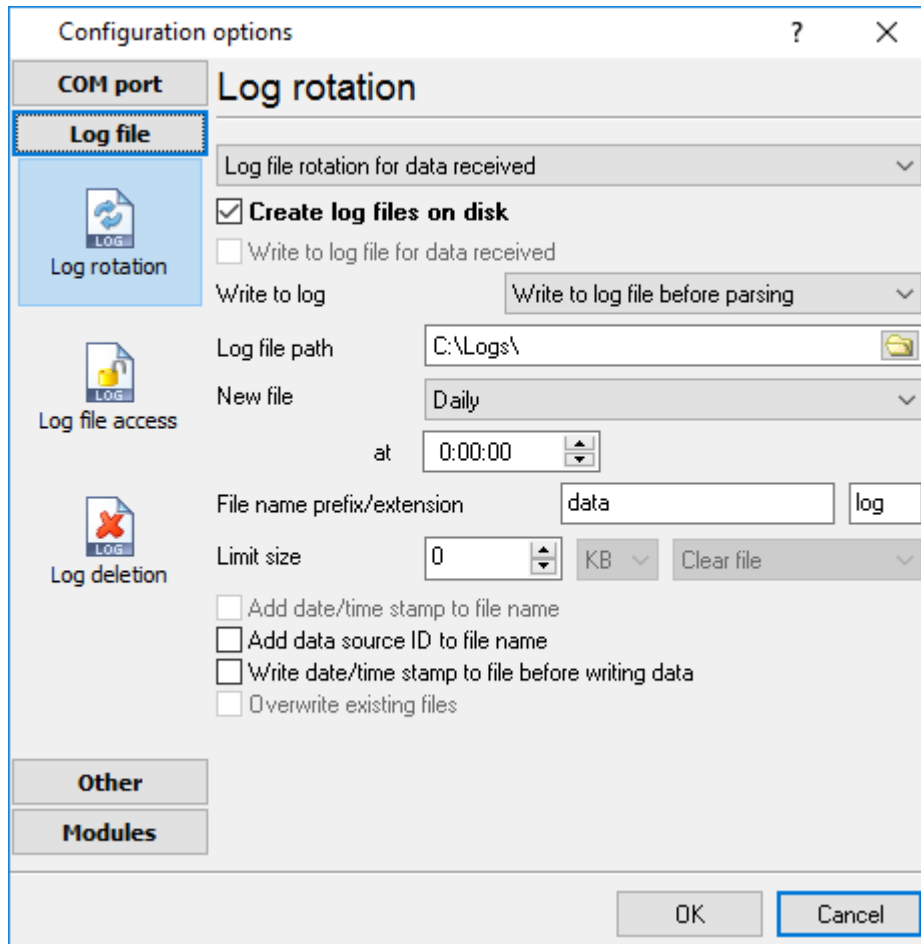


Fig. 4.1.1 Log-file forming modes

Set the "Create log file on disk" option to checked state. Then you can set path to folder, where files will be created with the help of dialog window, which will be showed up after clicking a button with picture of opening folder. You should select a necessary folder in the dialog window and click the "OK" button.

Note: The program can work with network paths too, but in this mode, the program will increase data flow over a network and can be failed with exceptional errors.

A log file name can be stamped with date and time. In this case a new log file is created periodically. The time stamp format depends on the selected period. For instance, if the "File name prefix" field is set to "sample", the "File extension" field to "log" and the "File name format" option is "Daily", then each log file created will have the format "sampleYYYYMMDD.log". On March 21st, 2003, the log file will be "sample20030321.log". Please, note, that the final extension (after the final period), remains at the end of the file name.

Log rotation mode is defined by the following key parameters:

- **File name prefix** - text string, which will be added at file name beginning;
- **File name extension** - text string, which will be a file extension (characters after dot);

Limit size - the "Limit size" field specify the maximum size in kilobytes of any log file. If you'll specify zero size, then the file size will not limited. You may select from the following modes:

1. **Clear file** - if the log file size will exceed the limit specified, then the log file content will be deleted and file filling will start from beginning.
2. **Rename old** - if the log file size will exceed the limit specified then the existing log file will be renamed.
3. **Shift (no threshold)** - the older data over the limit specified will removed from the log file.
4. **Shift (with threshold)**. In this mode the program will wait when the file size will exceed the limit specified + the threshold value. After this, the older data over the limit specified will removed from the log file.

If the program works continuous for a long time, it is possible that the log file will have large size and this file will be inconvenient for looking and analysing. For this there is the possibility to create files in dependence with the time on PC. You can select one variant predefined or set up new one:

- **Daily** - file will be created with name containing prefix, and date in format DDMMYYYY, where DD is two-digit day sign, MM is two-digit month sign and YYYY is four digits of the current year. The file name extension will be added at the end of file;
- **Monthly** - file will be created with name containing prefix, and date in MMYYYY format. The file name extension will be added at the end of file;
- **Each data packet in different file** - in this mode the program splits data flow to a different file. In this mode you should configure the parser or the program will split a data by timeout about 300 ms.
- **Don't create new file** - in this mode the program will write all data to one file. It is recommended for a small data flow. Otherwise your log file will be too big and a performance of the program will fall down;
- **User's format** - file will be created with name containing prefix and date in showed by you format (for example, DDMMYYYY). The file name extension will be added at the end of file. The file may not contain format signs, then file name will be constant. You should not use characters, that the OS doesn't allows in file name, such as "/", "\", "*", "?" and some others;
- **Weekly** - create a new file every week. The file name will contains a week number;
- **After data timeout** - the program will create a new file if the program didn't receive any data at the specified interval.
- **Hourly** - file will be created with name containing prefix, and date in format YYYYMMDDHH, where HH is two-digit hour sign, DD is two-digit day sign, MM is two-digit month sign and YYYY is four digits of the current year. The file name extension will be added at the end of file;
- **Constantly named file** - the current log file will have a constant name. When creating a new file the existing log file will be saved using the new file name that will contain a data and time stamp.

Date and time formatting codes:

- d - day, not adding null(1-31).
- dd - day ,adding null(01-31).
- ddd - day of the week in text form(Mon-Sat) according to standard, set on this computer.

dddd - day of the week in full text form(Monday-Saturday) according to standard, set on this computer.
m - month, not adding null(1-12).
mm - month, adding null (01-12).
mmm - month in text form(Jan-Dec) according to standard, set on this computer.
mmmm - month in full text form (January- December) according to standard, set on this computer.
yy - year in the form of two last digits(00-99)
yyyy - year in the form of four last digits (0000-9999).
h - hours, not adding null (0-23).
hh - hours, adding null (00-23).
n - minutes, not adding null (0-59)
nn - minutes, adding null (00-59).
s - seconds, not adding null (0-59).
ss - seconds, adding null (00-59).

Example: you want to create log file every hour. It is desired that file name starts from "sample_log" and the file extension "txt".

Answer: set file prefix = sample_log_, file extension= txt (without dot!). In file name format show HHDDMMYYYY. Now file will be created every hour. Naturally, you can set any formatting characters combination, described higher.

If you want to access to a log file while the program work, then you should configure [access mode settings](#) ^[29] for the log file in the next chapter.

Add date/time stamp to file name - this option is available for modes #4 and #7 and allows to add date and time to the file name.

Add data source ID to file name - if this options is activated then then the program will append the data source name at the beginning of the file name. For example, COM1-sample20030321.log.

Write data/time stamp to file before writing data - if this options is activated then then the program will write a date/time stamp to a file before each data portion.

Overwrite existing files - this option is available for modes #4 and #7 and allows to delete an existing log file before creating a new log file.

4.6.3.2 Log file access

During work can be such situations, when it is necessary to get access to a file with *current* data (current log file) from other applications (for example, for data processing). But while you are accessing the current log file Advanced OPC Data Logger can't write data to a log file and all data at this moment will be lost. We recommend to use a temporary file for data storage. It is most safe way. (fig. 4.2.1).

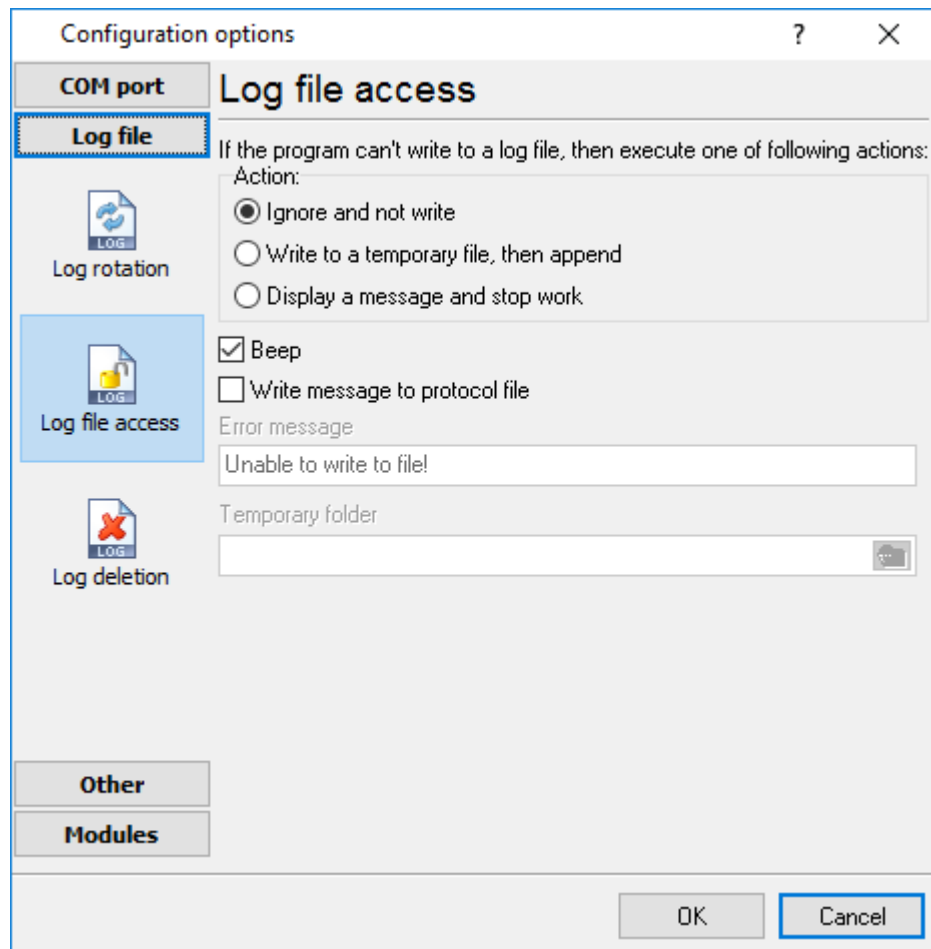


Fig. 4.2.1 File access mode.

You can select one from following variants:

- **Ignore and not write** - with this mode, the data will be **lost**;
- **Write to a temporary file, then append** - a temporary file will be created, to which writing will be done. After access to current file will be got, temporary file content will be added to the end of main file. But mind that if file is created in dependence of time, there can be a situation when at temporary file forming name of the main file will be changed. Then temporary file will be added to the end of newly created file.
- **Display a message and stop work** - data will be lost until dialog window is closed.

You can set up your message text, which will be displayed at writing error to data file. The sound signal can be on for an additional indication. You can also enable writing a message to a protocol file.

4.6.3.3 Log deletion

The deletion of files (fig. 4.3.1) will help you to avoid stuffing your hard disk with needless information. Log files can be deleted either depending on the time of storing or when the maximal number of files is exceeded.

When deleting files by the time of their storage, the files that were modified last time before the specified period are deleted.

When controlling the number of files, the files with the oldest modification dates are deleted first.

You can select both variants of file deletion. In that case files will be deleted when either of the conditions is true.

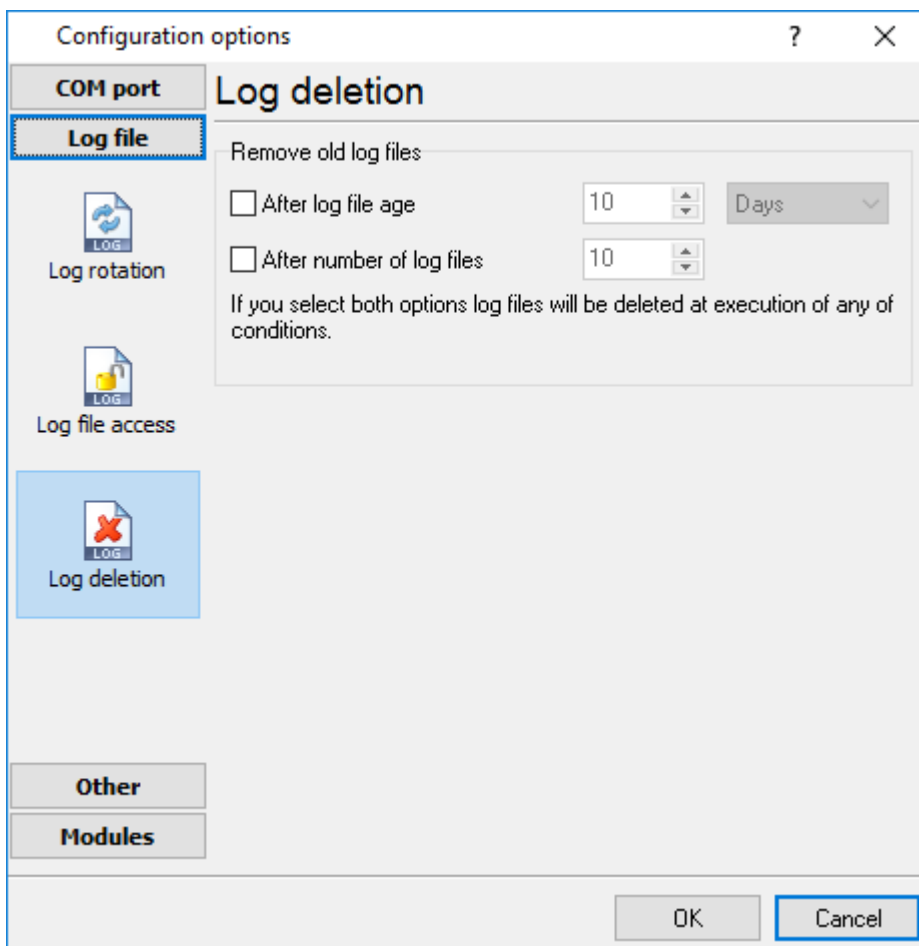


Fig. 4.3.1 Log deletion

4.6.3.4 CSV file logging

By default the program is writing data to a text file that isn't compatible with the CSV format. But you can create Excel compatible CSV files. Simply activate logging to a CSV file. **Note:** You need to activate "Export all items at one time" in group properties in [OPC settings](#)¹².

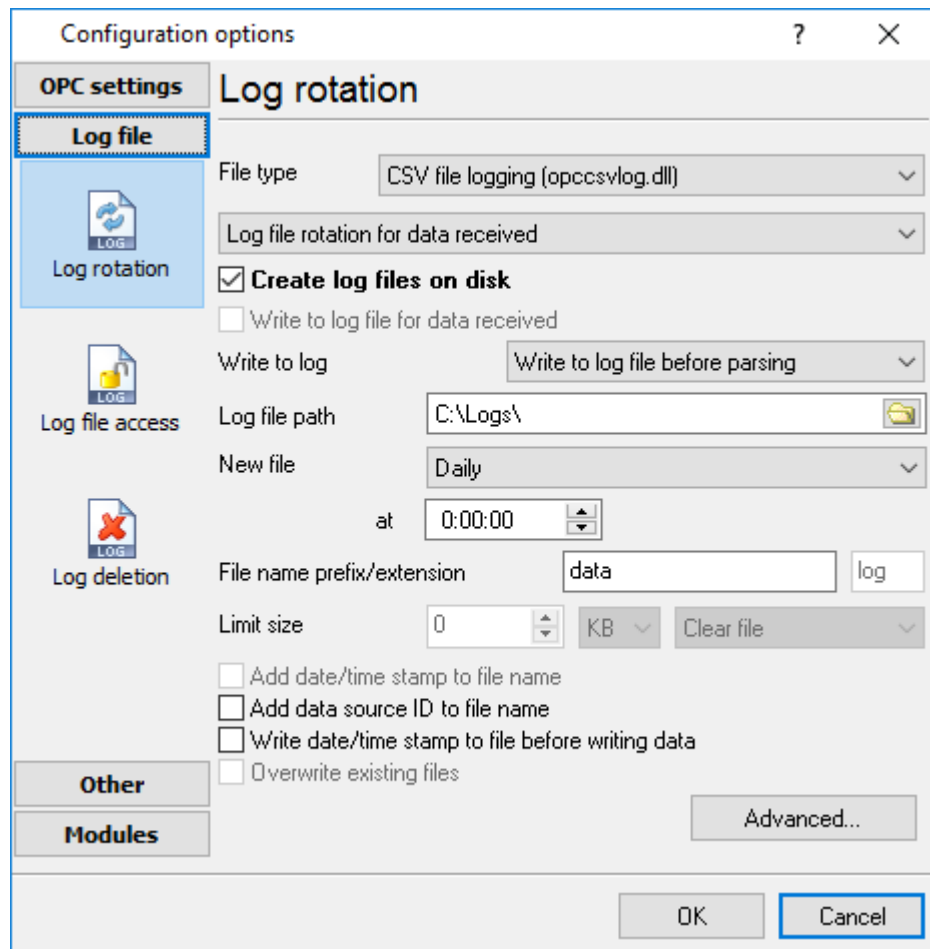


Fig. 4.4.1 CSV logging

4.6.4 Modules

4.6.4.1 Introduction & setup

To extend program functionality we implemented plug-ins modules. Module structure lets reduce your program size and purchase costs (you pay only functionality, which you need), to low down program distributive download time, your computer processor load and reduce disk space.

Advanced OPC Data Logger supports few types of modules (fig. 5.1.1 - 5.1.3):

- **Data filter** - data filters allow you to filter your data and modify values of parser variables;
- **Data export** (fig.11) - Advanced OPC Data Logger has many modules for passing serial data directly to other applications, such as as keystrokes where incoming data is passed to other programs as a sequence of keys, as DDE Server that passes data to other programs using Dynamic Data Exchange, ODBC for exporting data to a database and many others;
- **Events handling** (fig.12) - an external plug-ins used to handle events generated by the Advanced OPC Data Logger software. Once an event occurs (for example: "Data source is opened" or "Configuration changed"), the plug-in creates a text message using the specified template and sends a notification, do some actions, such as execute programs, scripts and etc. The form of the notification or actions depends on the plug-in settings.

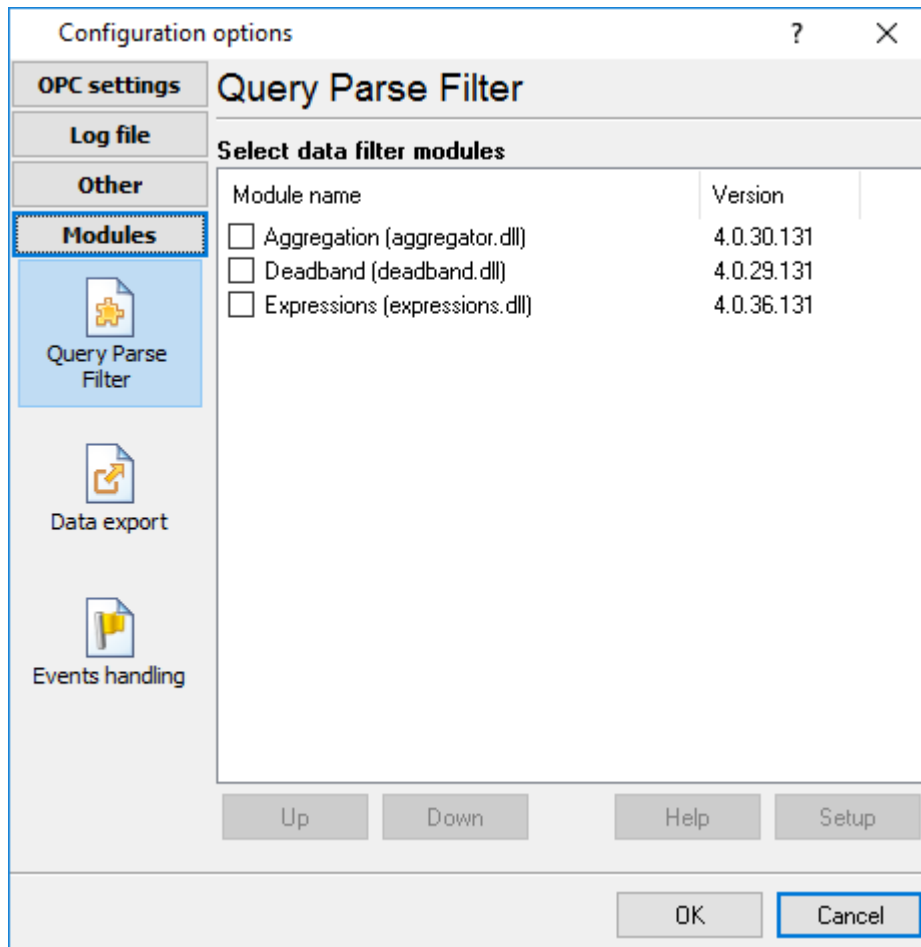


Fig. 5.1.1. Activating plug-ins

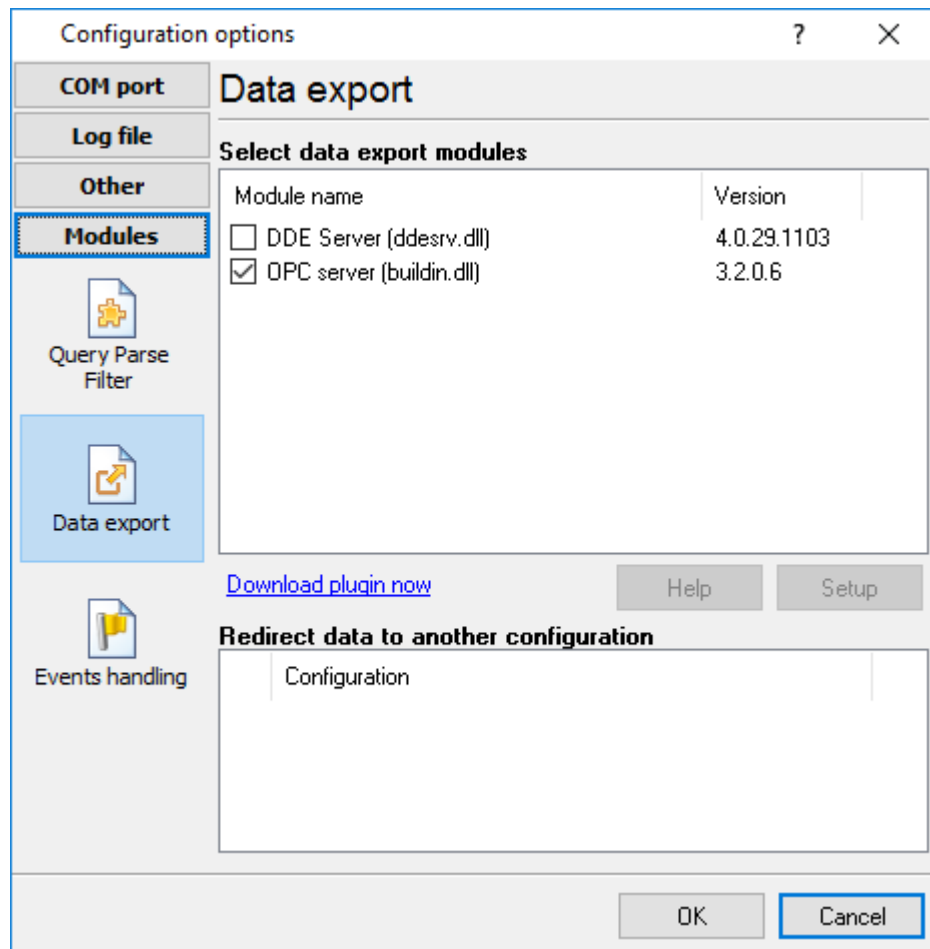


Fig. 5.1.2 Activating data export plug-ins

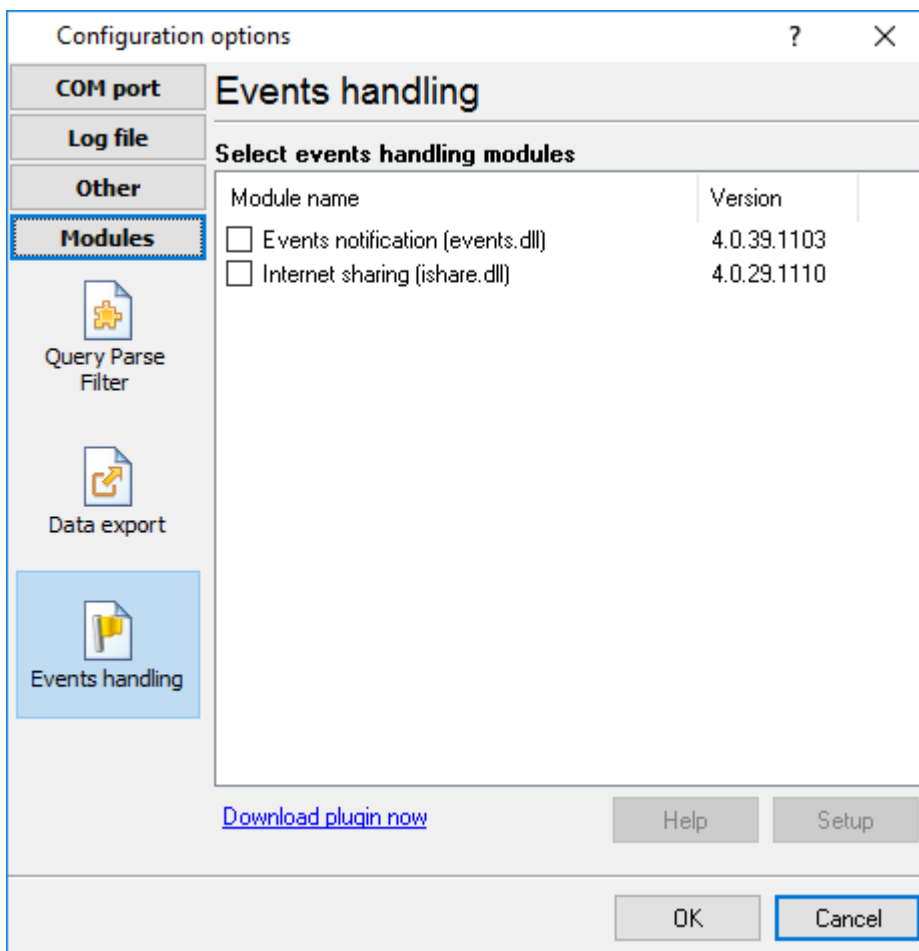


Fig. 5.1.3 Activating events handling plug-ins

You can parse and export data sent and received (fig. 5.1.1). By default, only data received will be parsed.

Installation

You can easily install a new module. usually, you should start the installation file and click the "Next" button for few times. The installation wizard will detect a place of your Advanced OPC Data Logger software and place a plug-in module and all distributive files to the "Plugins" folder, which is in the program folder (by default X:\Program Files\Advanced OPC Data Logger\Plugins).

After program restart a module will be loaded and initialized. If module is supported with our software, its short description you will see in modules list (Fig. 5.1.1-5.1.3). Most modules require additional settings. If you want to configure the plug-in module, simply click the "Setup" button near it. If you selected the module and the "Setup" button is not active, then module doesn't have additional settings and can work without additional settings. Please, read users manual of a corresponding plug-in for additional information.

Configuration steps

1. Select and configure a query module. You may use a module of this type if you need to send some data to your device (for example, initialization strings or request strings).
2. Select and configure a parser module. This step is necessary, because filter and export modules can use parsed data only. If you didn't select the parser module, then you can't configure the data filter and data export modules.
3. Activate and configure data export modules. You can select one or more modules simultaneously. The program will use selected modules simultaneously. Please, note, the program can't use the data export module, if you didn't configure the parser module.
4. Activate and configure event modules. You can select one or more modules simultaneously.

4.7 Program options

4.7.1 Window view

This tab in program options (fig. 6.1.1) allows you to customize appearance of the main window of the program (fig. 1.1.1^[7]). You can access this tab through the "Options -> Program options" menu item in the main window.

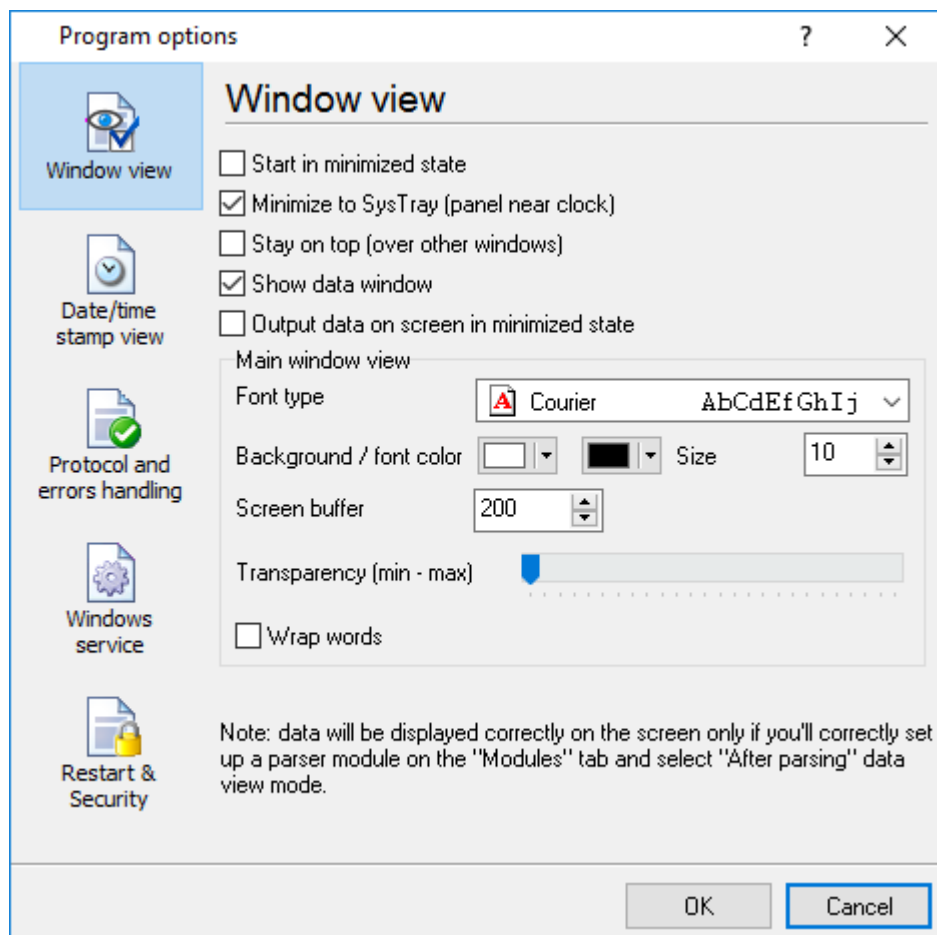


Fig. 6.1.1 Window view setting

You can set following parameters:

- **Start in minimized state** - at start Advanced OPC Data Logger will automatically put its icon on panel near clock (SysTray fig. 6.1.2);
- **Minimize to SysTray** - while the main window of Advanced OPC Data Logger minimizes, the program will automatically put its icon to the panel near clock;
- **Show data window** - if you specify this option, then the program will display all data in the main window. If you are logging many ports on slow PC, then you can computer CPU load rate with disabling of this option;
- **Output data on screen in minimized state** - if you'll enable this option, then the program will display processed data in minimized state. If you are logging many data sources on slow PC, then you can decrease computer central processor load rate with disabling of this option;
- **Font type** - the data will be displayed with this font type in the main window only. We recommend to use mono-spaced fonts in this field, such as: Terminal, Courier etc.;
- **Screen buffer** - at exceeding of value specified the data window will be cleaned;
- **Window view** - will let you setup data window view (font color, font type, background color).
- **Transparency** - in Windows 2000 and later will let you set transparency of the main window. The most left position is normal window view and most right position is maximum transparency.
- **Wrap words** - if you didn't configure a parser module or your data flow doesn't contain a blocks separator, then your data without this option enabled will be displayed as one long string in the data window.

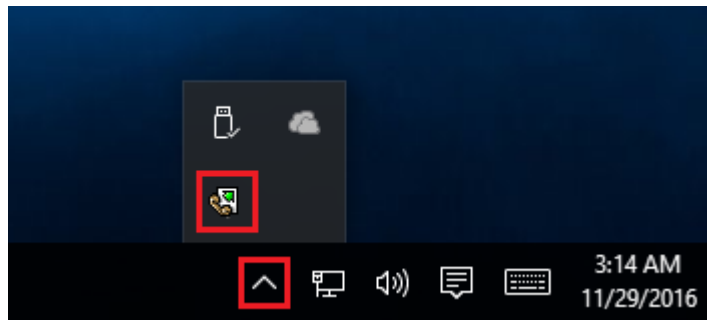


Fig. 6.1.2 Sys tray - panel near clock

4.7.2 Date/time stamp view

This group of options (fig. 6.2.1) allows to configure the format of date/time stamps that will be used in the main program window and log files.

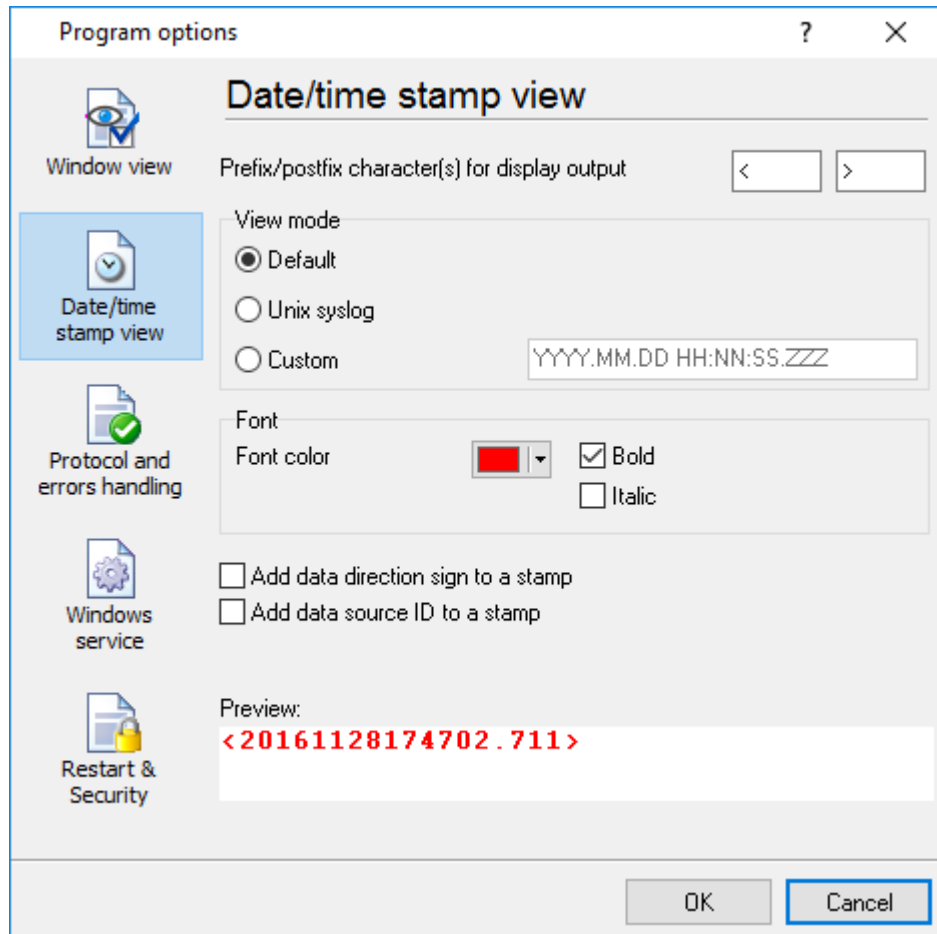


Fig. 6.2.1 Configuring data/stamp view

Prefix/Postfix characters for display output - these options allow to define beginning and ending characters of a date/time stamp that will be showed in the program window. When outputting data to a log file the program uses [individual characters](#)^[24] for each configuration.

View mode - allows to select the standard or define the custom format of the date/time stamp.

Font - this group allows to define the color and font of date/time stamp.

Add data direction sign to a stamp - if this option is activated then the program will append TX or RX to the end of the stamp.

Add data source ID to a stamp - if this option is activated then the program will data append data source ID at the beginning of the stamp. For example, COM1.

4.7.3 Protocol and errors handling

While the program execute, she generates many messages about errors and events. All these messages are being registered in a protocol file. This can be start or stop of the program, some messages from plug-in modules etc. On this tab you can define the kind of messages, which you want to put a protocol file (fig. 6.3.1). Here you can set maximum protocol file size and a formatting mode. Usually, the protocol file is in a program folder and has the name of the program with the 'log' extension.

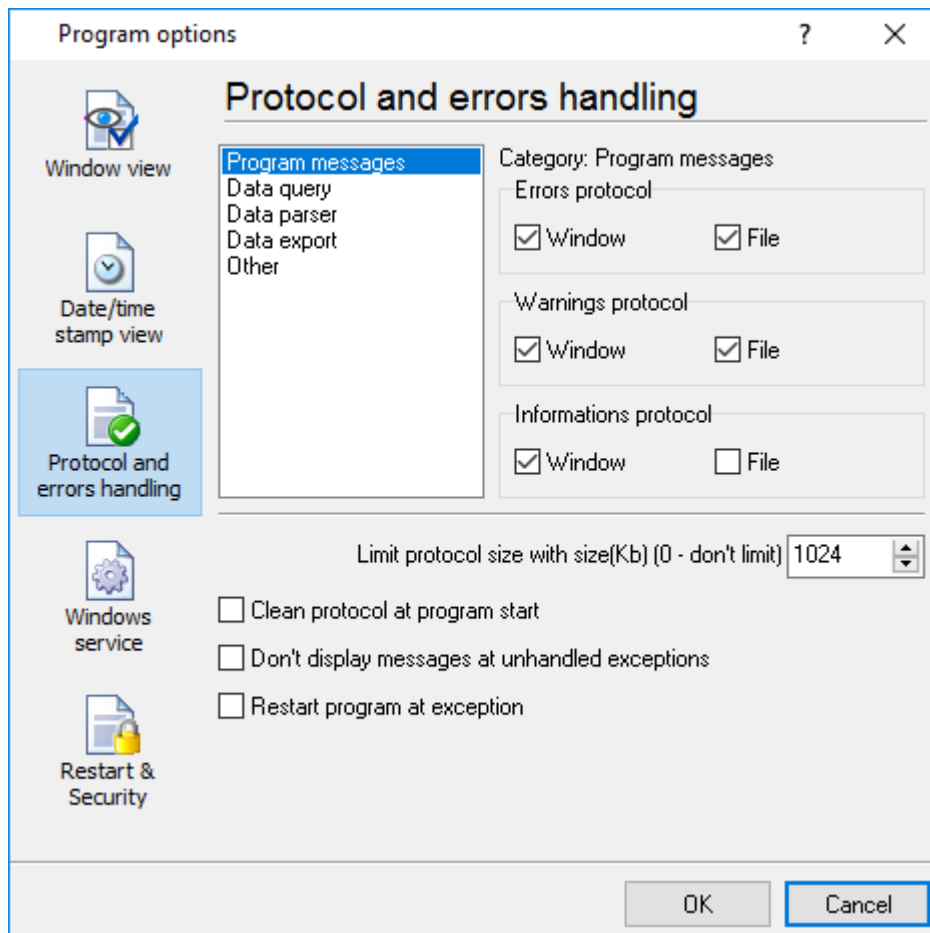


Fig. 6.3.1 Protocol settings

Advanced OPC Data Logger works with three types of messages:

- **Information messages** - this type of messages informs you on operations which are fulfilled in the current time;
- **Warnings** - warns you of possible failures or possible errors. Interference of the user is not required, but check is required;
- **Errors** - the program has detected an error which elimination needs involvement of the user.

There is the possibility to log following events:

- **Program messages** - messages about start or stop of the program, etc.;

- **Data query** - messages which are generated in a data query module;
- **Data parser** - messages which are generated in a data parser module;
- **Data export** - messages which are generated in a data export module;
- **Other** - messages that can not be associated with types above.

You can write each type of messages to a protocol file or/and to the list in the main window. Please, specify necessary options for each message type at "Window" and "File" fields.

If you don't want to allow to grow a protocol file size to an unlimited size, then you can enable the "Clean protocol at program start" or limit protocol file size in the "Size" field.

Some exceptional messages can occur while the program execute. In most cases these messages crash the program and the most safe way is to restart the program. Please, specify the "Restart program at exception" option and the program will be restarted automatically.

If you want look all program messages, then you can disable the "Don't display messages at unhandled exceptions" check box and the program will open the exception message window with detailed information.

4.7.4 Service mode on Windows 2000+

4.7.4.1 Configuration

Windows 2000+ services use will let you:

- control service on local and remote computers, including remote computers with Windows 2000+ system;
- setup actions on emergency service restore in case of failure, for example auto service or computer restart (only on computers with Windows 2000 or later);
- create for services other names and descriptions, to find them easier (only on computers with system Windows 2000 or later);
- run service before user login (password input);
- service can be setup on automatic start after operation system load.

Note 1: you must be logged in as an administrator in order to change the configuration or control the service in any way (start, stop, pause, continue).

Note 2: On Windows Vista and later you should start the program with elevated administrator privileges.

If you want to use the program as a service application, then, please, go to the "Options -> Program options -> Windows service" tab (fig. 6.4.1), then enable the "Use program as a service" check box. Later, please, specify the startup type of the service. There can be following variants:

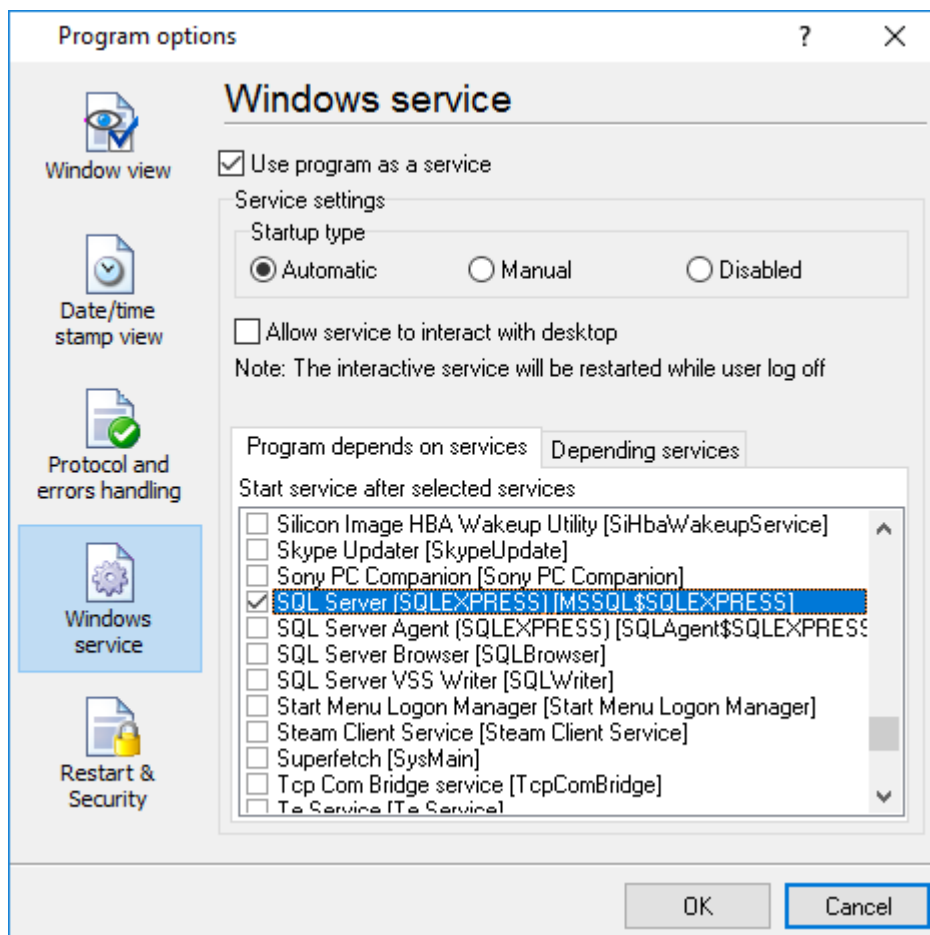


Fig. 6.4.1 Service settings

1. **Automatic** - service will be started automatically at every Windows start, before user login;
2. **Manual** - you can start the service application in the "Services" window in the Control panel (fig. 6.4.2);
3. **Disabled** - service can't be started.

If you want to change program settings while service mode, then enable the "Allow service to interact with desktop" option. In this case, the program will put the icon to the SysTray (fig. 6.4.2). But then your interactive service will be restarted while user log off.

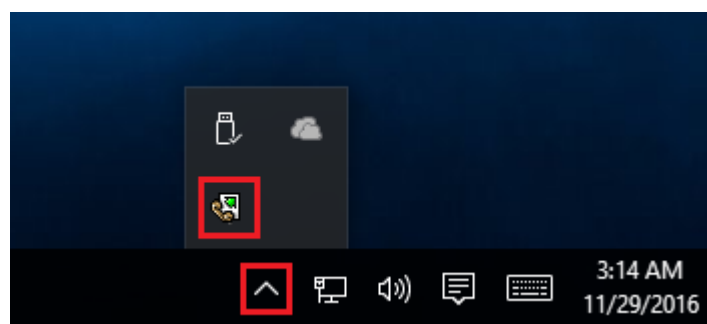


Fig. 6.4.2 Service icon in Systray

If you use data bases or special drivers, before service run, these applications must be run. You can specify what services should be started before Advanced OPC Data Logger in the "Program depends on services" window (fig. 6.4.3).

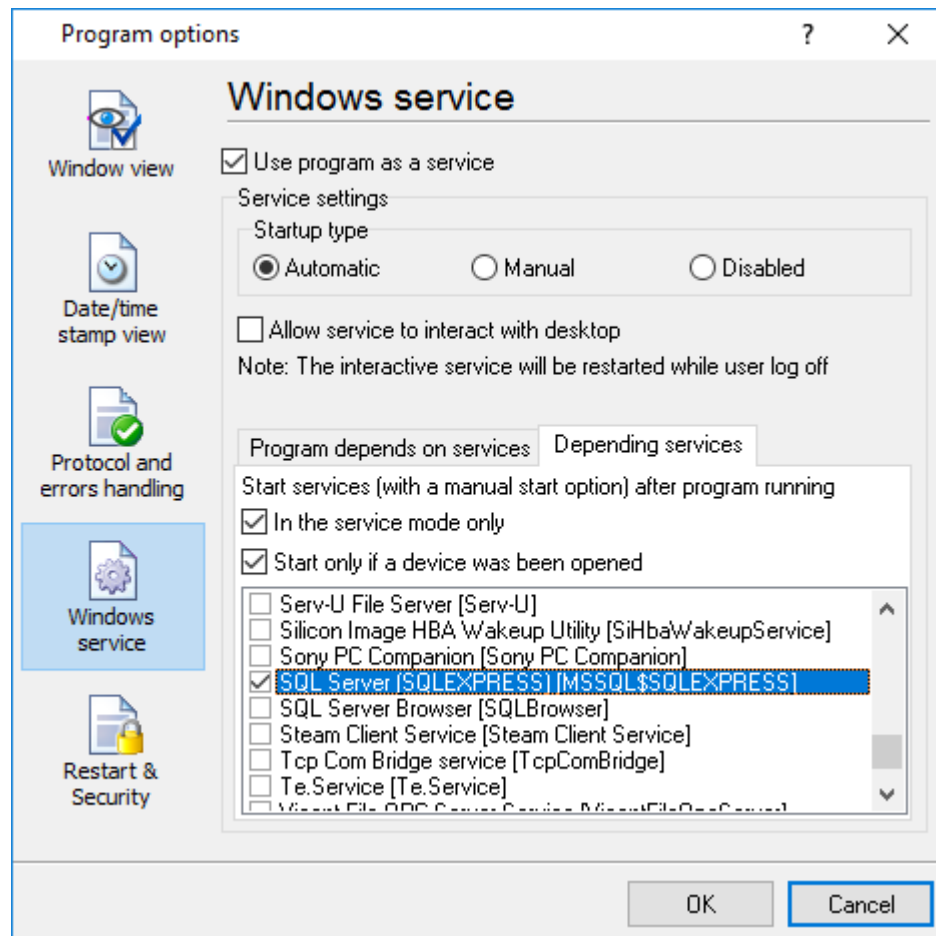


Fig. 6.4.3 Service settings #2

In some case you need to start Advanced OPC Data Logger before starting other services. In this case you should:

- Switch a start mode of a target service to "Manual";
- Start Advanced OPC Data Logger;
- Set on the target service at the "Services depend on ASDL" tab;
- Select mode when you need start these service;
- Restart Advanced OPC Data Logger.

After you installed the service mode of the program, restart a computer or run the service manually from the "Services" window in the Control panel (fig. 6.4.4)

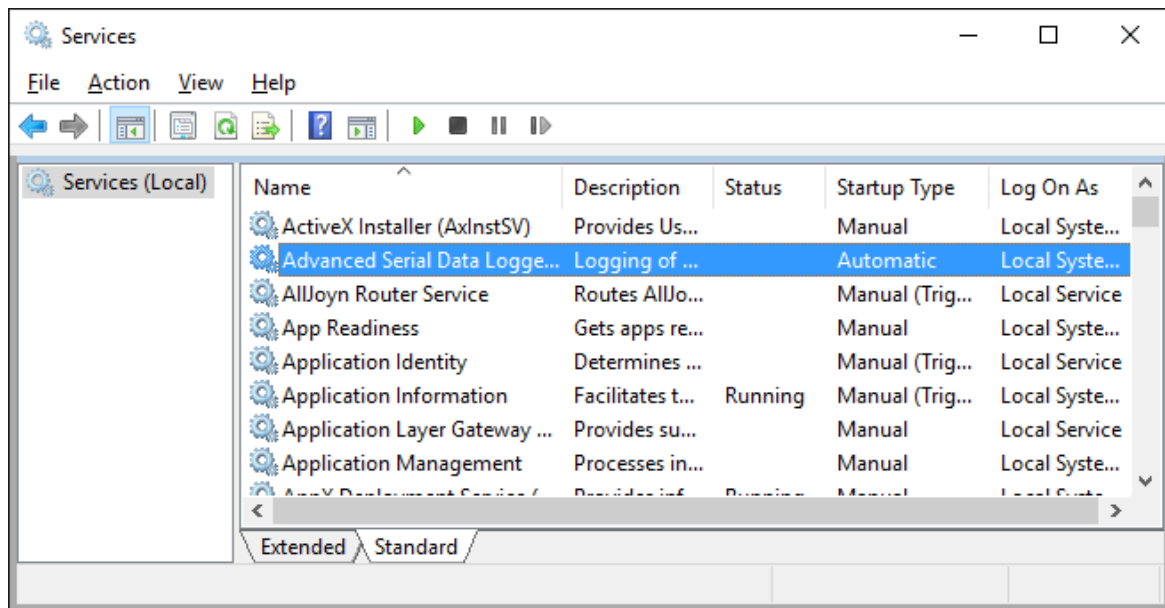


Fig. 6.4.4 Manual service run (in Windows 2000)

After start of the service, the service processes names will be displayed in a process list: `opcloggersrv.exe` and `opclogger.exe` (fig. 6.4.5). The '`opcloggersrv.exe`' application makes interface between the service manager and the Advanced OPC Data Logger software. Unlike `svany.exe` utility, our service stops safely.

The screenshot shows the Windows Task Manager Performance tab. At the top, system resource usage is displayed: CPU at 37%, Memory at 47%, Disk at 94%, and Network at 0%. Below this, the 'Processes' tab is active, showing a list of running applications and background processes. The 'Advanced Serial Data Logger - L...' process is highlighted in blue.

Name	CPU	Memory	Disk	Network
Apps (1)				
Task Manager	12.2%	9.0 MB	0 MB/s	0 Mbps
Background processes (39)				
Advanced Serial Data Logger - L...	0%	8.4 MB	0 MB/s	0 Mbps
Advanced Serial Data Logger - L...	0%	0.6 MB	0 MB/s	0 Mbps
Application Frame Host	0%	2.0 MB	0 MB/s	0 Mbps
COM Surrogate	0%	2.5 MB	0 MB/s	0 Mbps
Cortana	0%	70.6 MB	0 MB/s	0 Mbps
Device Census	0%	1.2 MB	0.1 MB/s	0 Mbps
Host Process for Windows Tasks	0%	0.7 MB	0 MB/s	0 Mbps
Host Process for Windows Tasks	0%	4.8 MB	0 MB/s	0 Mbps

Fig. 6.4.5 Process list

If you want to configure the program as a service, then you must be logged with administrator rights. The service application can be controlled, stopped or removed with help of a command line string. Run `opcloggersrv.exe` with following parameters:

- `/?` - short help;
- `/I` - install service for start in manual mode;
- `/A` - install service for start in automatic mode;
- `/D` - install service in off state;
- `/R` - remove service from computer.

4.7.4.2 Windows Vista+ notes

One of the ways Vista's security was improved was by separating system services and user applications into separate 'sessions'. Keeping the system services isolated helps to better secure them, but also makes any interactive interface unavailable to the user. That's where the Interactive Services Detection service comes in. When a service needs to interact with the user, Interactive Services Detection presents a dialog that will switch the user to the session where the service is

running so they can interact with the service. For an excellent, detailed description of this, see next paragraph.

Many sites recommend disabling this service, but doing so will result in you not being able to interact with any services that require your attention. This service is run manually by default, so there is little point to disabling it unless you don't want to be bothered by important information from the software you may be trying to run.

- **Display Name:** Interactive Services Detection
- **Service Name:** UI0Detect
- **Process Name:** UI0Detect.exe
- **Description:** Enables user notification of user input for interactive services, which enables access to dialogs created by interactive services when they appear. If this service is stopped, notifications of new interactive service dialogs will no longer function and there may no longer be access to interactive service dialogs. If this service is disabled, both notifications of and access to new interactive service dialogs will no longer function.
- **Path to Executable:** %windir%\system32\UI0Detect.exe
- **Default Startup:**
 - * Home Basic: Manual
 - * Home Premium: Manual
 - * Business: Manual
 - * Enterprise: Manual
 - * Ultimate: Manual

4.7.5 Restart & Security

Sometimes the program should be restarted. For example, if you've changed the program settings remotely and want to reload program automatically with the new settings. To do that, specify the time for restarting the program on the "Restart & Security" tab in program options "Options->Program options". Just specify the time of day, when the program should be being restarted.

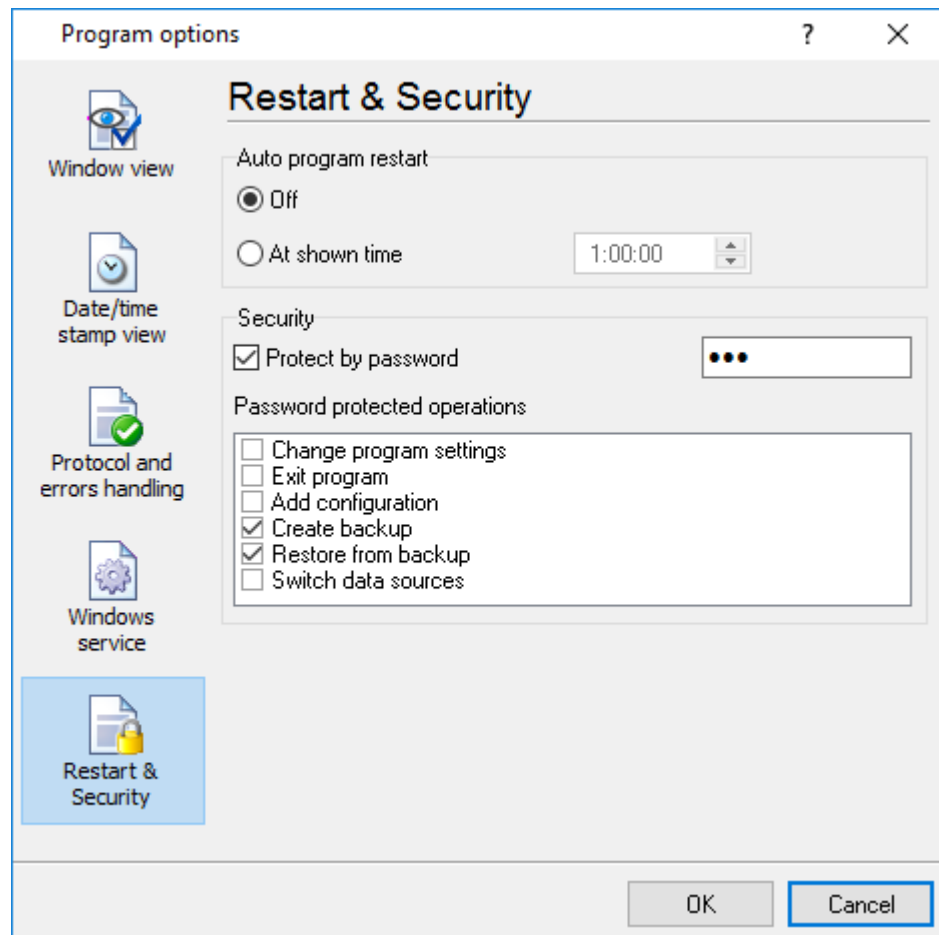


Fig. 6.5.1 Program restart settings

On this tab you can also protect some actions with the program by a password. To do that, activate the "Protect by password" option, define a password and select protectable actions.

5 Having problems?

5.1 Program doesn't run or work

It is necessary to make sure in proper time installation on your computer, so as if you put clock after program installation, protection from use after trial period works.

Also program won't work, if you started SoftIce application debug environment or some other. In any other case, please, inform our developers about your problems, our address support@aggsoft.com.