



# *OPC Scada Viewer*

Watch It!

PRINTED MANUAL

# OPC Scada Viewer

© 1999-2010 AGG Software

All rights reserved. No parts of this work may be reproduced in any form or by any means - graphic, electronic, or mechanical, including photocopying, recording, taping, or information storage and retrieval systems - without the written permission of the publisher.

Products that are referred to in this document may be either trademarks and/or registered trademarks of the respective owners. The publisher and the author make no claim to these trademarks.

While every precaution has been taken in the preparation of this document, the publisher and the author assume no responsibility for errors or omissions, or for damages resulting from the use of information contained in this document or from the use of programs and source code that may accompany it. In no event shall the publisher and the author be liable for any loss of profit or any other commercial damage caused or alleged to have been caused directly or indirectly by this document.

Printed: 04.01.10

## **Publisher**

*AGG Software*

## **Production**

© 1999-2010 AGG Software

*<http://www.aggsoft.com>*

---

# Table of Contents

<b>Part 1 About</b>	<b>1</b>
1 About .....	1
2 Glossary .....	2
<b>Part 2 License, Registration and technical support</b>	<b>3</b>
1 License .....	3
2 Limitations .....	4
3 How to register .....	4
4 Support .....	5
<b>Part 3 Installation</b>	<b>5</b>
1 System requirements .....	5
2 Installation process .....	5
<b>Part 4 Using the program</b>	<b>6</b>
1 Introduction .....	6
2 Interface .....	7
Introduction .....	7
File menu .....	8
View menu .....	8
Edit menu .....	9
Visualization block .....	11
Options menu .....	19
3 Using the program .....	21

# 1 About

## 1.1 About

The family of the OPC software technologies is a unified interface for controlling automation objects and technological processes. Most gauges, monitoring and control devices nowadays have OPC servers that can be used to obtain the current data. OPC Scada Viewer supports the main and most widely used OPC DA1 and DA2 standards that allow you to exchange data with programmable logic controllers, human-machine interfaces, computer numerical controlled devices and other devices in real time.

OPC Scada Viewer allows you to easily and very visually display data received via the OPC interface. Data is displayed in real time, which allows you to use the program for permanent control and monitoring in various systems. OPC Scada Viewer offers a lot of indicators for displaying the values of OPC tags, from simple analog pointer indicators to charts and diagrams. It is possible to customize every indicator separately for your needs.

### OPC Scada Viewer main features:

- Retrieving data from one or several OPC servers simultaneously;
- Displaying the value of an OPC tags with the help of a wide range of indicators;
- Different indicators for different types of OPC tags (logical values, strings, integers and fractions);
- Customizable visualization parameters for each indicator;
- Creating several tabs with different sets of indicators;
- Using any image as the background image for indicators;
- Visual and sound warnings when an OPC tag exceeds the specified limits;
- Automatically controlling a connection to the OPC server and keeping it alive;
- Supporting all Windows version starting from Windows 95.

The program is very easy to use! The configuration process is completely visual and has full context help. You can completely customize the application.

### Typical use

A good example of using the program is replacing a large and cumbersome SCADA in a system where it is necessary to only control and monitor and where there is no need to send any commands back.

### Sample applications

- Data log systems;
- Remote monitoring systems;
- Alarm and warning systems.

Company home page: <http://www.aggsoft.com/>

Software home page: <http://www.aggsoft.com/opc-scada-viewer.htm>

## 1.2 Glossary

**Bit** - Binary digit in the binary numbering system. Its value can be 0 or 1. In an 8-bit character scheme, it takes 8 bits to make a byte (character) of data.

**Bytes** - A collection of eight bits that represent a character, letter or punctuation mark.

**Cable** - Transmission medium of copper wire or optical fiber wrapped in a protective cover.

**Client/Server** - A networking system in which one or more file servers (Server) provide services; such as network management, application and centralized data storage for workstations (Clients).

**DA** – data access.

**Internet** - A global network of networks used to exchange information using the TCP/IP protocol. It allows for electronic mail and the accessing and retrieval of information from remote sources.

**IP, Internet Protocol** - The Internet Protocol, usually referred to as the TCP/IP protocol stack, allows computers residing on different networks to connect across gateways on wide-area networks. Each node on an IP network is assigned an IP address, typically expressed as 'xx.xx.xx.xx'.

**IP address (Internet Protocol address)** - The address of a computer attached to a TCP/IP network. Every client and server station must have a unique IP address. Client workstations have either a permanent address or one that is dynamically assigned to them each dial-up session. IP addresses are written as four sets of numbers separated by periods; for example, 198.63.211.24.

**LAN (Local Area Network)** - A network connecting computers in a relatively small area such as a building.

**OPC (OLE for Process Control)** – a set of universally accepted specifications providing a universal data exchange mechanism in control and management systems.

**OPC Alarms and Events** - the OPC interface for access to alarm and event data.

**OPC Data Access** - the OPC interface for access to real-time data.

**OPC DA** - see OPC Data Access.

**OPC Historical Data Access** - the OPC interface for access to archived data.

**OPC HDA** - see OPC Historical Data Access.

**PC** - abbreviation for a Personal Computer.

**TCP/IP, Transport Control Protocol / Internet Protocol** - TCP and IP are communications protocols, that is, structured languages in which data is communicated between one process and another, and between one network and another. TCP/IP is implemented in a multi-level layered structure. TCP/IP is the 'glue' that ties together the many heterogeneous networks that make up the Internet.

## 2 License, Registration and technical support

### 2.1 License

Copyright © 1999-2010 AGG Software.  
All Rights Reserved

#### SOFTWARE LICENSE

##### Trial Limited Version

The trial limited version of this software may be used for evaluation purposes at the user's own risk for a trial period. At the end of the trial period, the user must either purchase a license to continue using the software, or remove it from his/her system.

The trial limited version may be freely distributed, provided the distribution package is not modified. No person or company may charge a fee for the distribution of OPC Scada Viewer without written permission from the copyright holder.

##### Licensed Version

On payment of the appropriate license fee, the user is granted a non-exclusive license to use OPC Scada Viewer on one computer (i.e. a single CPU), for any legal purpose, at a time. The registered software may not be rented or leased, but may be permanently transferred, if the person receiving it agrees to terms of this license. If the software is an update, the transfer must include the update and all previous versions.

Registered customer are entitled to free updates during one year from the date of purchase. It means that during one year you can download and install the latest registered versions of OPC Scada Viewer from our site. If you don't want to purchase an updates, you can use the program forever; it will never expire, but you won't be able to use the latest version. If you purchased the software more than one year ago, you are no longer entitled to free upgrade and technical support; however, you can purchase an updates to the latest version at a special, greatly discounted price, and this updates will allow you to have free updates and technical support for another year. The type of update license must match the type of your existing license.

Whilst every care has been taken in the construction and testing of this software, it is supplied subject to the condition that the user undertakes to evaluate the suitability of the control for his/her purposes. AGG Software makes no representation of the software's suitability for any purpose, and the user agrees that AGG Software has no responsibility for any loss or damage occasioned by the use of this software.

**TO THE MAXIMUM EXTENT PERMITTED BY APPLICABLE LAW, THE SOFTWARE AND DOCUMENTATION ARE PROVIDED "AS IS" AND AGG SOFTWARE DISCLAIMS ALL OTHER WARRANTIES AND CONDITIONS, EITHER EXPRESS OR IMPLIED, INCLUDING, BUT NOT LIMITED TO, IMPLIED WARRANTIES OF MERCHANTABILITY, FITNESS FOR A PARTICULAR PURPOSE, CONFORMANCE WITH DESCRIPTION, TITLE AND NON-INFRINGEMENT OF THIRD PARTY RIGHTS.**

**TO THE MAXIMUM EXTENT PERMITTED BY APPLICABLE LAW, IN NO EVENT SHALL AGG SOFTWARE BE LIABLE FOR ANY INDIRECT, INCIDENTAL, CONSEQUENTIAL, SPECIAL OR EXEMPLARY DAMAGES OR LOST PROFITS WHATSOEVER (INCLUDING, WITHOUT LIMITATION, DAMAGES FOR LOSS OF BUSINESS PROFITS, BUSINESS INTERRUPTION, LOSS OF BUSINESS INFORMATION, OR ANY OTHER PECUNIARY LOSS) ARISING OUT OF THE USE OR INABILITY TO USE THE SOFTWARE PRODUCT, EVEN IF AGG SOFTWARE HAS BEEN ADVISED OF THE POSSIBILITY OF SUCH DAMAGES. IN ANY CASE, AGG SOFTWARE'S CUMULATIVE AND ENTIRE LIABILITY TO YOU OR ANY OTHER PARTY FOR ANY LOSS OR DAMAGES RESULTING FROM ANY CLAIMS, DEMANDS OR ACTIONS ARISING OUT OF OR RELATING TO THIS AGREEMENT SHALL NOT EXCEED THE PURCHASE PRICE PAID FOR THIS LICENSE.**

Should any term of these terms and conditions be declared void or unenforceable by any court of competent jurisdiction, such declaration shall have no effect on the remaining terms hereof.

If you do not agree to these conditions you should not install this software.

## 2.2 Limitations

Program is distributed on shareware terms. This means limited and unavailable secondary program possibilities, which become valuable or available after program registration. To register the program read [here](#)<sup>[4]</sup>.

In trial version of our program are the following limits:

- Trial period is limited by 21 days. After that time program won't work until it is registered.
- Continuous program work time is limited. After set period a message will be displayed and program stops its work;

## 2.3 How to register

The program is distributed on shareware terms. This signifies limited or unavailable many features of the program, getting of full value or available after program registration.

If you'd like to be a registered user, to get information about the release of new versions, to use technical support and, at last, to get access to disabled functions of the program, register your copy. For registration, please, read [license agreement](#)<sup>[3]</sup>.

If you want to buy a program through the Internet visit the [registration page](#) of our site. On this page you can get the newest information about the registration process, and also find an order link. After you've have the form of order registration. Enter your personal information and choose the most convenient payment method for you. Further, you'll get notification and follow the notes in it.

More information about services, registration documents, payment means you can get on our [registration page](#) of our site.

Registered users are entitled to FREE upgrades for the major version, they purchased. That means, that in case you bought registration key for version 2.00, you will receive upgrades for versions 2.xx

for FREE . If a new authorization code is required it will be issued upon request at no charge to users who have registered for the current major version.

## 2.4 Support

Technical questions	<a href="mailto:support@aggsoft.com">support@aggsoft.com</a>
Common questions	<a href="mailto:info@aggsoft.com">info@aggsoft.com</a>
Sales questions	<a href="mailto:sales@aggsoft.com">sales@aggsoft.com</a>

## 3 Installation

### 3.1 System requirements

One of the following operation systems are necessary to run the program:

- Windows 95 (needed to install the last comctrl.dll update, please, visit download section of our site);
- Windows 95 OSR2;
- Windows 98;
- Windows Me.

If you'll use our software on the following OS, then you need administrator privileges for registration and installation:

- Windows NT4 (SP4 and above).
- Windows 2000 Professional;
- Windows 2000 Server;
- Windows XP x86 and x64;
- Windows 2003 Server x86 and x64;
- Windows Vista (all editions) x86 and x64.

You'll also need installed Internet Explorer 5.0 or later to look help on the program.

### 3.2 Installation process

If any beta-version was installed on your computer, remove it.

Quit of the working OPC Scada Viewer on installation time.

Run an installation file.

By default, OPC Scada Viewer will be installed to the directory "/Programs Files/OPC Scada Viewer" of your system disk, but you can change this path.

In the standard distributive of OPC Scada Viewer are no additional modules files, which you can download from our [site](#).

## 4 Using the program

### 4.1 Introduction

#### Main features

- Viewing data from one or several OPC simultaneously;
- Displaying the value of an OPC tags with the help of various indicators;
- Different indicators for different types of OPC tags (logical values, strings, integers and fractions);
- Customizable visualization parameters for each image.
- Creating several pages with different sets of indicators.

The main window of the program is displayed on the screen after the program is started (fig.1). The image below shows the features of the program and explains what this or that part of the window is for.

#### Interface

1. Menu bar - the main menu of the program described in the "[Menu](#)" section;
2. Toolbar - this bar contains buttons for the most frequently used features;
3. Tabs where you can put together several indicators as a group. You can use the "[Edit - New Tab](#)" menu item to add a new tab;
4. The background image that may contain a technological process. You have to prepare the background image in another program;
5. Indicator - it shows the current value of the OPC tag in this or that form. You can find how to create and configure indicators in the "[Visualization block](#)" section;
6. The log bar of the program where you can see messages about current operations;
7. Status bar - it shows the current time, the status of the program or the current operation.

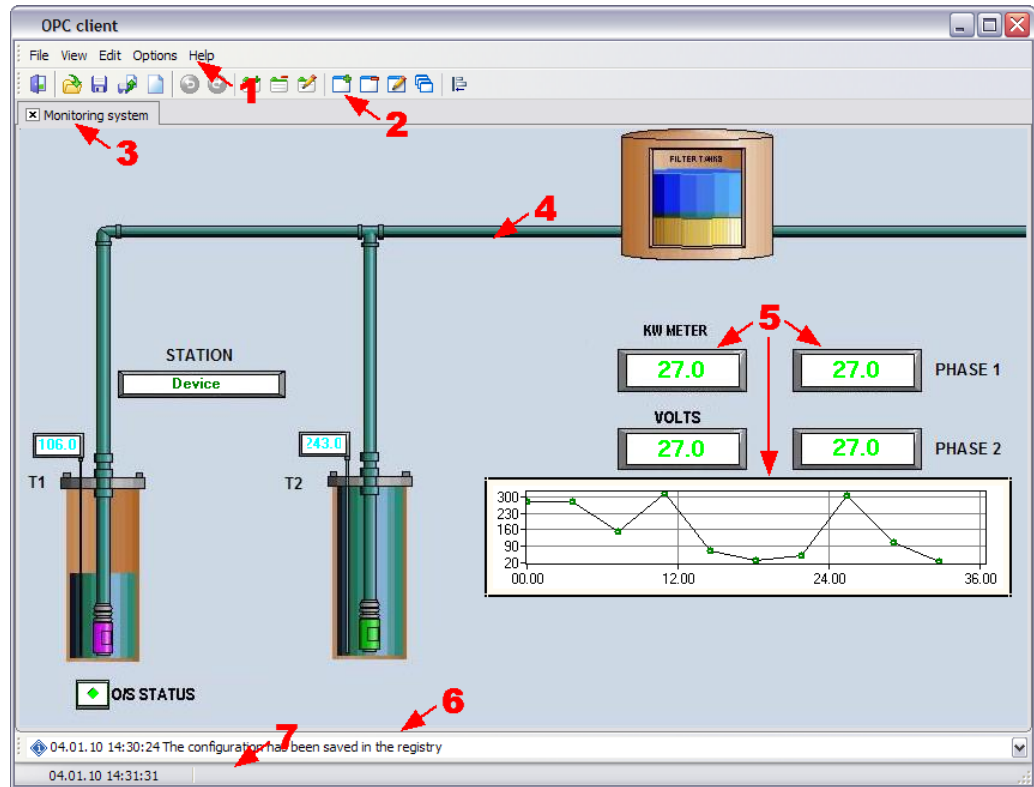


Fig.1 Main window

Most menu items and toolbar buttons have a tooltip. For example, if you move the mouse pointer over a toolbar button, you will see a tooltip (fig.2).

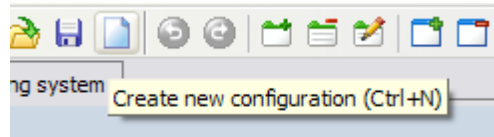


Fig.2 Interface item tooltip

## First steps

To configure the program, you should:

1. [Add a new tab](#)<sup>[9]</sup>;
2. Add one or several [indicators](#)<sup>[10]</sup> on the tab;
3. Configure the parameters of each [indicator](#)<sup>[11]</sup>.

## 4.2 Interface

### 4.2.1 Introduction

The main menu is located on the menu bar you can move anywhere on the screen. The menu consists of the following items: File, View, Edit, Options, Help. Each menu is described in the corresponding section below. You can open some menu items using keyboard shortcuts or toolbar buttons. By default, the toolbar is located below the menu bar and can also be moved anywhere on

the screen.


Some most frequently used menu items are available on the context menu you can open with a right click on an object.

Information about keyboard shortcuts for each menu item is given in the corresponding section. A keyboard shortcut given as "Ctrl+N" means that you have to press and hold down the Ctrl key simultaneously press the N key.

## 4.2.2 File menu

### Open


*Keyboard shortcut: Ctrl+O*

Toolbar button: 

Open the project file that was saved before to a file with the ".xml" extension. All tabs with visualization blocks are closed once it is loaded.

### Save


*Keyboard shortcut: Ctrl+S*

Toolbar button: 

Save the parameters of tabs and visualization blocks on them to a file with the ".xml" extension.

### New configuration


*Keyboard shortcut: Ctrl+N*

Toolbar button: 

Delete all tabs and visualization blocks on them and get the program ready for a new project.

### Exit

*Keyboard shortcut: Alt+F4*

Toolbar button: 

Close the program. When you exit the program, all parameters of the current configuration are saved in the registry and it will be loaded next time you start the program.

This menu item also contains the list of recently opened files to make it comfortable for you to switch between different projects.


## 4.2.3 View menu

You can use this menu to select which interface items should be shown and which ones should be hidden. In particular, you can show or hide the main menu, the toolbar or the log bar.

## 4.2.4 Edit menu

### Undo


Keyboard shortcut: *Ctrl+Z*

Toolbar button: 

Undo the last operation of moving or deleting visualization blocks and deleting tabs. The program remembers 100 last operations that you can later undo. After you load a configuration from a file, the list of operations you can undo is cleared.

### Redo


Keyboard shortcut: *Ctrl+R*

Toolbar button: 

Redo the last undone operation of moving or deleting visualization blocks and deleting tabs.

### New Tab

Keyboard shortcut: *Ctrl+T*

Toolbar button: 

The command adds a new tab you can put visualization blocks on. Once you select this item, you will see the Tab Parameters dialog box (fig.1).

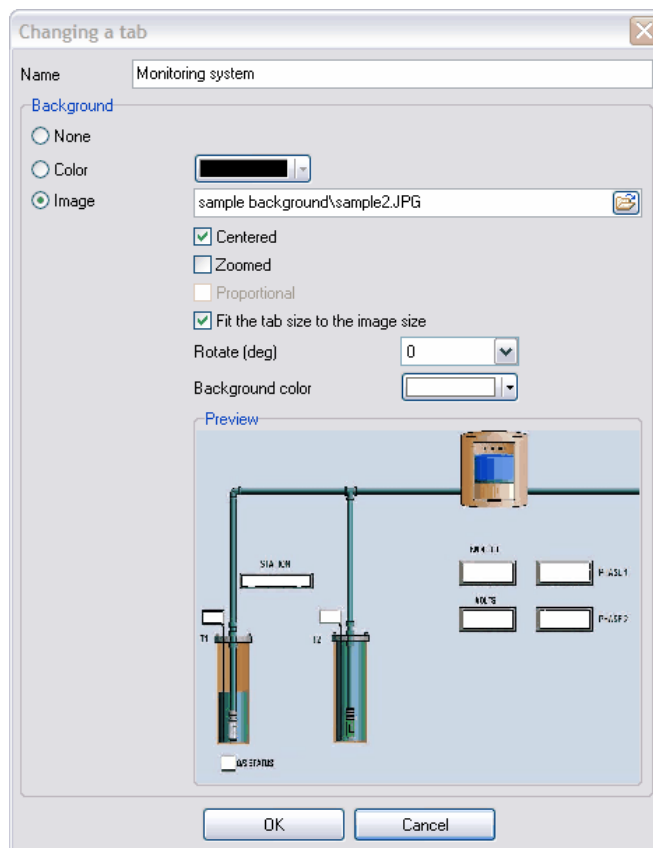


Fig.1. Tab Parameters dialog box

You can specify the name that will be displayed on the title of the tab and also select the background type:


1. **None** - the tab will have no background image and will use the default background color;
2. **Color** - the tab will have no background image and will use the specified background color;
3. **Image** - the specified image will be used as a background image over which visualization blocks will be placed. Our program has no built-in tools for drawing graphical elements displaying a technological process. However, you can do it in any other graphics editor.

You can use images of the following formats as a background image: BMP, JPG, PNG and GIF.

If you use a background image, you can specify the following options:


- **Center** - the image will be placed in the center of the tab;
- **Fit** - the image will be zoomed to fit the tab size;
- **Keep proportions** - this option becomes available when the "Fit" option is enabled. If the "Keep proportions" option is disabled, the background image will be distorted in order to cover the entire area of the tab without keeping the proportions. If the "Keep proportions" option is enabled, the image will be zoomed with the proportions kept, but it is possible that there will be margins visible at the sides of the image in this case;
- **Fit the tab size to the image size** - if this option is enabled, the image will always occupy the entire area of the tab and the program window will be automatically resized to fit the image size. Also, you will not be able to resize the window of the program;
- **Rotate** - the option allows you to rotate the background image to the specified number of degrees;
- **Background color** - if you keep proportions while zooming the image to fit the tab size, the areas of the tab that are not covered by the image will be of the specified color.

## Delete Tab

Toolbar button: 

This command becomes available after you create one or several tabs using the "New Tab" command. You can use this command to delete the current tab with all its visualization blocks. If you select this command, the program will ask you to confirm the operation before it deletes the tab.


## Edit Tab

Toolbar button: 

This command becomes available after you create one or several tabs using the "New Tab" command. The command allows you to open the Tab Parameters dialog box (fig.1).


## New Block

*Keyboard shortcut: Ctrl+N*

Toolbar button: 


This command becomes available after you create one or several tabs using the "New Tab" command. The command allows you to add a visualization block, which is an indicator, to display the values of an OPC tag (OPC variable). You can find out how to add a block in the "[Visualization block](#)<sup>[11]</sup>" section.

## Delete Block

Toolbar button: 

This command becomes available if you select a visualization block on the tab and allows you to delete the selected block. If you select this command, the program will ask you to confirm the operation before it deletes the block.


### **Edit Block**

Toolbar button: 

This command becomes available if you select a visualization block on the tab and allows you to edit the parameters of the block. While editing the visualization block parameters, you will see the dialog box similar to the one described in the "[Visualization block](#)" section. You can also double-click a visualization block to edit its parameters.

### **Copy Block**

*Keyboard shortcut: Ctrl+Shift+C*

Toolbar button: 

This command becomes available if you select a visualization block on the tab and allows you to copy the selected block. If you select this command, the selected block is automatically copied. Its parameters are identical to the original ones, except for the title. After you copy the block, you can edit the parameters of the copy the way you need it. This feature makes it easier to create several blocks of the same type.

## **4.2.5 Visualization block**

After you select the [New Block command](#), the mouse pointer will look like "+" (a cross) that you can use to mark the borders of the new block. To do it, you should hold down the left mouse button and drag the rectangle to make it the necessary size. You can move the block over the tab using either the mouse or the arrow keys on the keyboard. You can use the keyboard to move the block as accurately as possible.

After you finish marking the borders of the visualization block, you will see the Visualization Block Parameters dialog box (fig.1). First, you should select the OPC tag the indicator will be displayed for. Depending on the tag data type, the list of available indicator types will be formed.

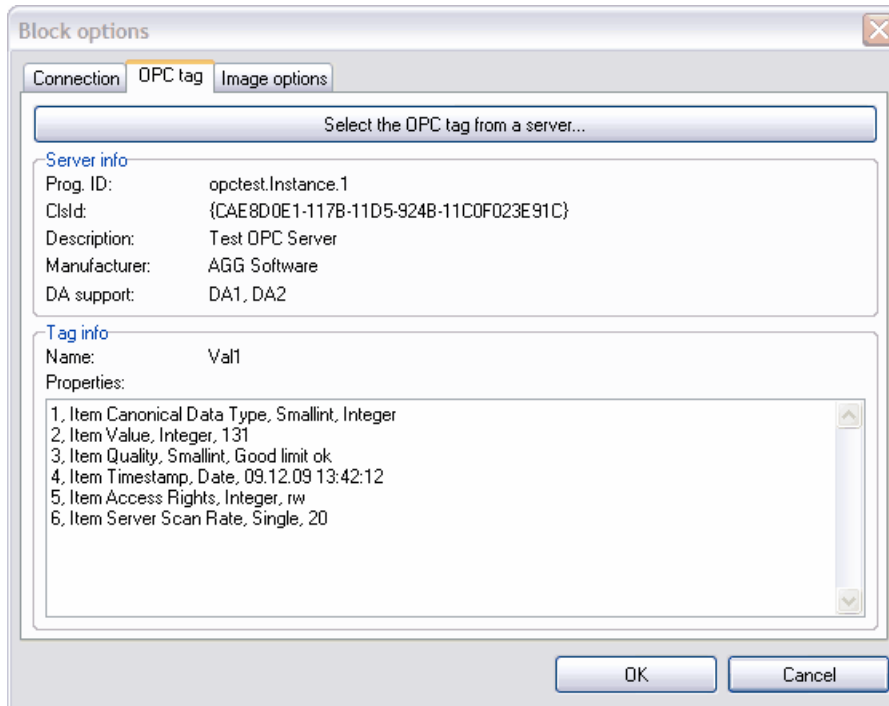
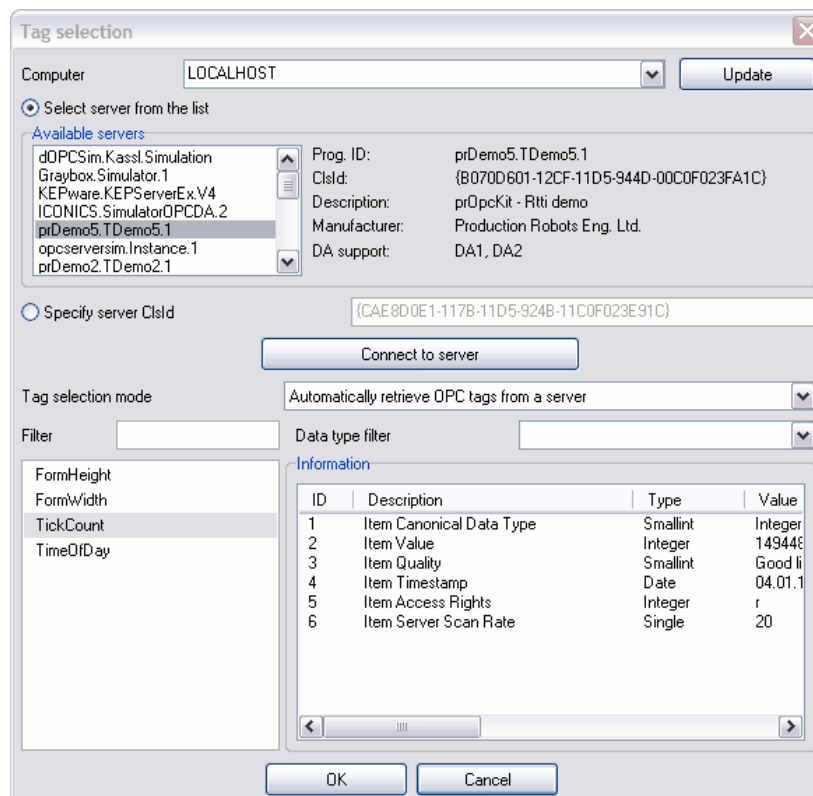


Fig.1. OPC tag selection

To select a tag, you should switch to the "OPC tag" tab and click the "Select a tag from the server" button. After that you will see the OPC Tag Selection dialog box (fig.2).



**Fig.2. Server and tag selection**

**Computer** - you can specify the name or the IP address of the remote computer. If you need to connect to the server on the local computer, specify LOCALHOST as the computer name. After you enter the computer name, click the "Update" button to get the list of available OPC servers. If the program cannot retrieve the list of servers, the following reasons are possible:

- The program was run by a user who has no permissions to connect to remote computer;
- OPC Core Components Redistributable from [www.opcfoundation.org](http://www.opcfoundation.org) are not installed on the local and remote computers

**Servers** - the list contains the list of available OPC servers on the specified computer.

**Info** - the group shows brief information about the selected OPC server.

- **Server** - the field shows the program ID (program name).
- **Description** - the fields shows the brief description of the server.
- **DA support** - the fields shows the supported DA.
- **Vendor** - the field shows the name of the vendor.

**Connect** - the button connects the module to the server and tag (if there are any on the server) appear in the "Tags" list after that. It is also possible to connect to the server with a double click on the server selected in the "Servers" list.

**Tag selection mode** - the list allows you to select one of the modes for selecting tags. Two modes are available:

1. Automatically retrieve tag names from the server - the program automatically retrieves the list of tags and their parameters from the server. Not all servers support this feature;
2. Manual mode - you have to specify the names of tags manually in this mode. You should use this method if the server does not allow OPC clients to retrieve the list of available tags.

### Automatic mode

**Filter** - it allows you to select only tags meeting the specified condition (by name or by data type) from those available on the server. This feature is convenient when there are a lot of tags on the server.

**Tags** - the list contains tags available on the selected server.

Info - the group shows information about the selected tag.

- **ID** - the column shows the tag identifier;
- **Description** - the column shows the brief description of the tag;
- **Type** - the column shows the tag type.
- **Value** - the column shows the tag value.

### Manual mode

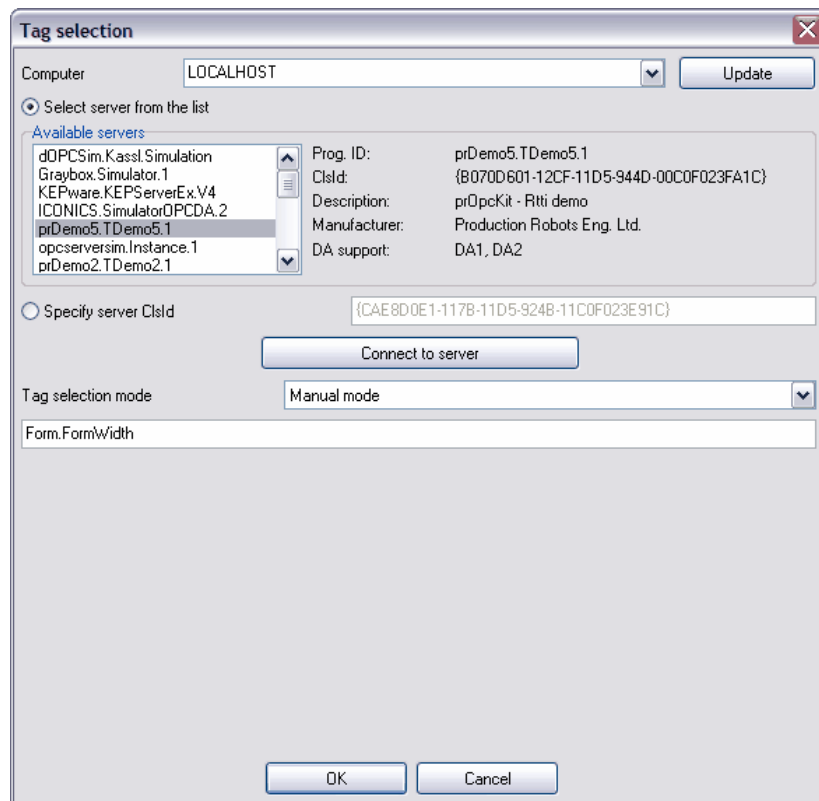


Fig. 3. Tag properties in the manual mode.

**Tag** - you have to specify the tag name, including the full path to it if there is any.

### Server connection parameters

After you select a tag in the manual or automatic mode, click the "OK" button and the information about the selected tag will appear in the Visualization Block Parameters dialog box (fig.1).

After that you should check the connection to the OPC server. To do it, switch to the "Connection" tab (fig.4)

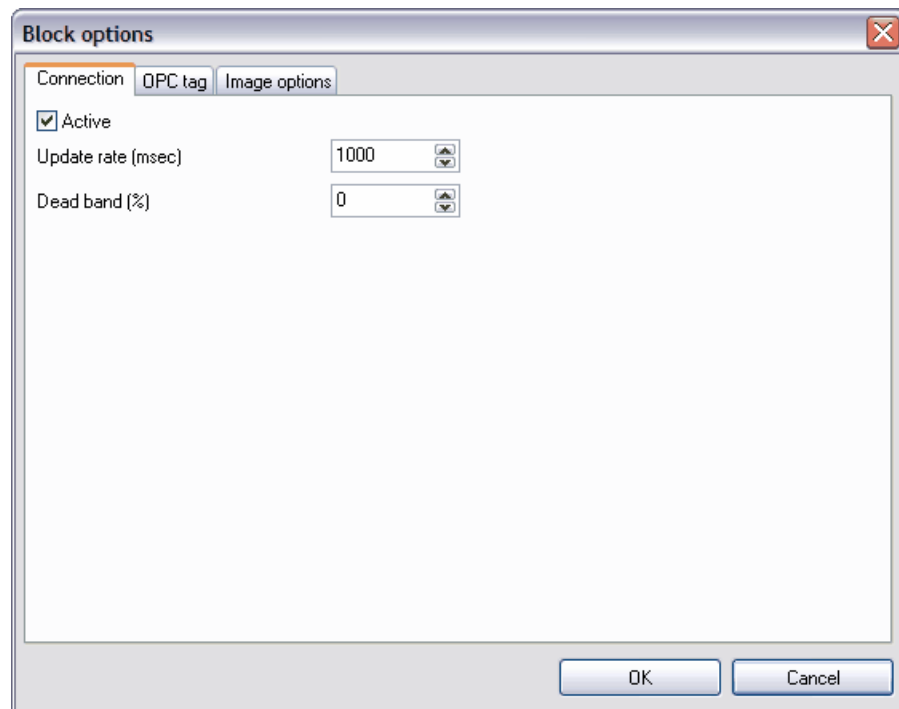


Fig. 4. Server connection parameters.

**Active** - if this option is enabled, the value of the tag will be retrieved from the OPC server.

**Update every** - the program will retrieve the values from the OPC server at the specified period.

**Dead band (%)** - the field contains the value of the dead band in percent. If the value of the tag changes within the dead band, the program will consider it unchanged and the value of the tag will not be shown. The default is 0 percent.

### Display parameters

After you select the tag, you should configure the display parameters for this tag. Depending on the tag data type, certain indicators will be available. To configure the display parameters, you should select the "Display Parameters" tab (fig.5).

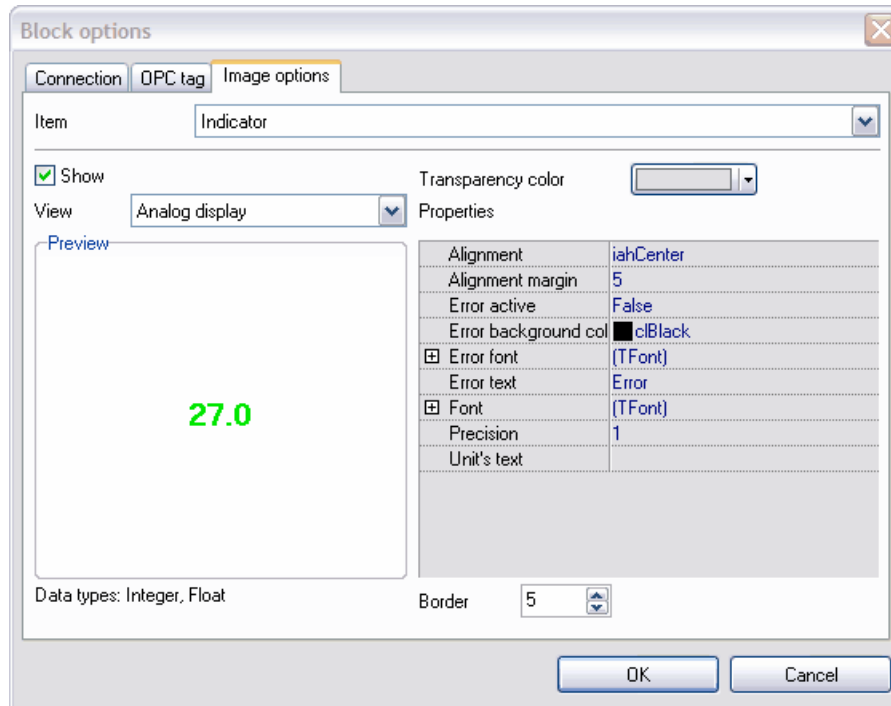


Fig. 5. Display parameters.

Every visualization block has several elements (fig.6). You can configure every element in the visualization block after you select the corresponding item from the "Element" drop-down list. You can show or hide each of the elements.

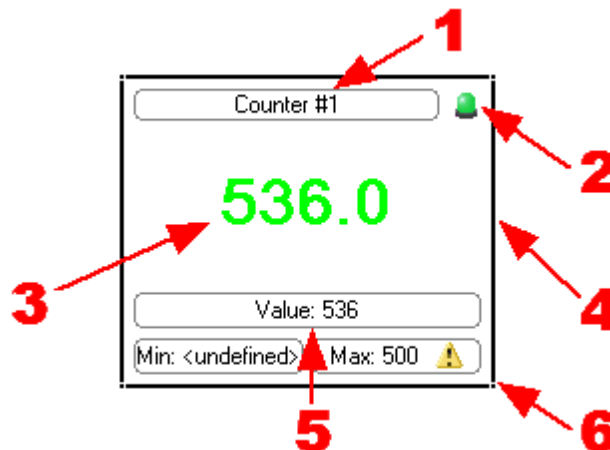


Fig. 6. Visualization block.

You can use the display parameters to specify the exact position of the visualization block and its size. To do it, you should select "Window" from the "Element" list (fig.7).

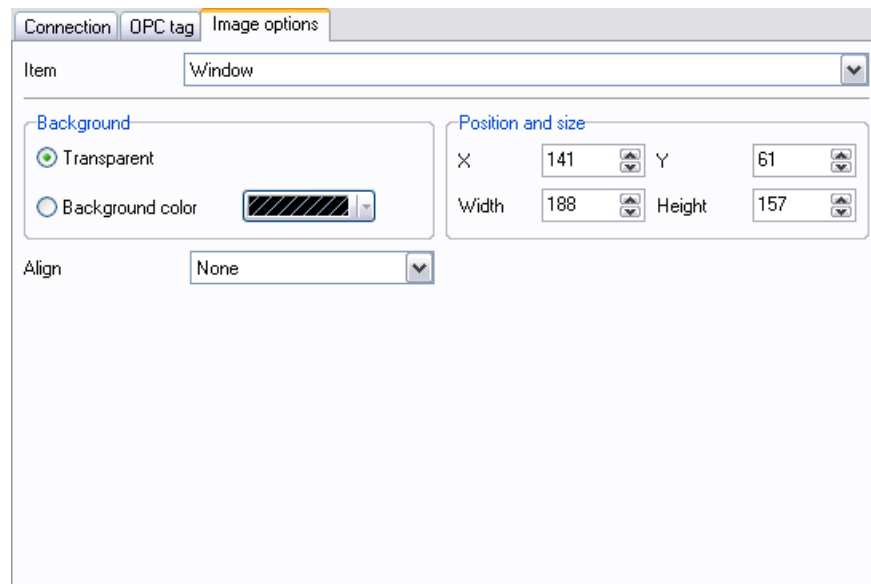


Fig. 7. Visualization block window parameters.

You can also specify the background color for the selected block and its alignment:

1. None - the block will be placed according to the user-defined position. The block size does not change;
2. Left, Right, Top, Bottom - the block will be placed along one of the specified sides. Besides, the block will be resized to fit the tab size. For example, if you select "Left", the block will always placed along the left size of the tab and the height of the block will correspond to the height of the tab;
3. Client - the block will occupy the entire area of the tab.

### Visualization block element description

1. **Title** - the program allows you to specify any text as the title of a block and to format it;
2. **Status indicator** - it shows the status of the connection to the OPC server. The green indicator shows that the connection to the server is active, while the red one shows that the connection has been broken;
3. **Indicator** - the value of the tag can be displayed with the help of various indicators. The program offers more than 20 types of various indicators. Each of them has its own set of display parameters that are displayed as a tree in the fig.5. You can preview changes in this tree of parameters in the preview window to the right from the tree of parameters. Data types the selected indicator can be used for are shown under the preview window;
4. **Frame** - the frame allows you to visually limit the block size. When the frame is enabled, you can also resize the block with the help of the mouse;
5. **Current OPC tag value** - some indicators are graphical ones it is difficult to tell the precise value of the tag from. This element allows you to display the precise value in addition to the value on the indicator;
6. **Minimum and maximum values for the OPC tag** - this parameter allows you to specify one or several conditions (fig.8) that will serve as a limit for the acceptable values of the tag. If the value exceeds the specified limit, the program will show a warning.

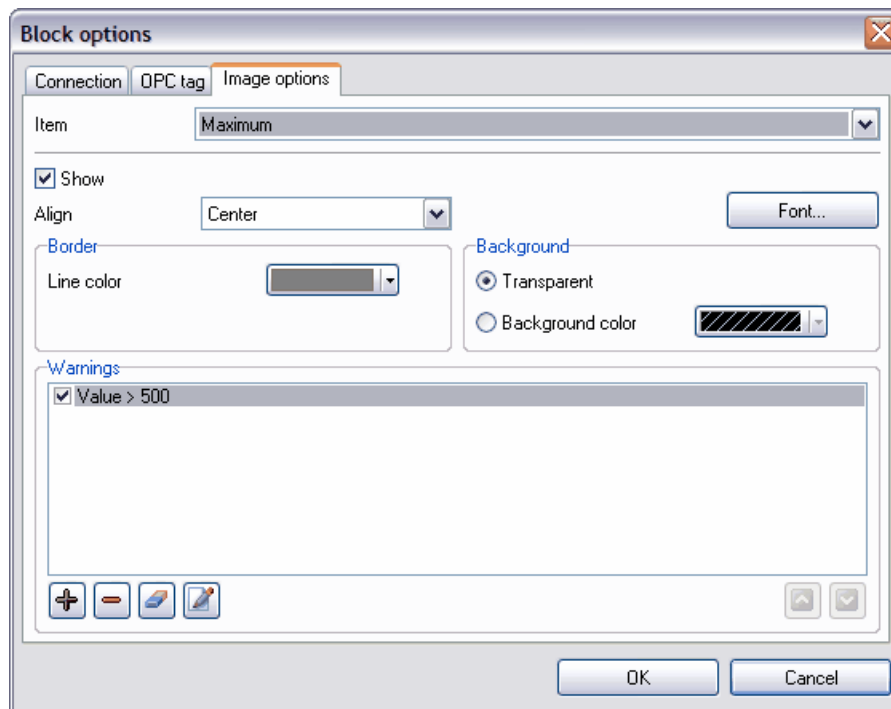


Fig. 8. Element parameters.

You can do the following for every element in a visualization block (fig.9):

- Show or hide the element with the help of the "Show" option;
- Specify the type, size and color of the font using the standard dialog box opened with a click on the "Font" button;
- Specify the alignment inside this element using the "Alignment" drop-down list;
- Specify the frame color;
- Specify the background color.

You can specify the list of conditions for the "Value", "Minimum" and "Maximum" elements (fig.8). If they are met, the program will display warnings and play the specified sound. To add a warning, select the corresponding element in the list and click the "Plus" button. After that you will see the dialog box where you should specify the necessary parameters (fig.9). Other buttons next to it are used for the following operations (left to right):

1. delete the selected warning;
2. delete all warnings;
3. edit the selected warning;
4. move the selected warning one position up;
5. move the selected warning one position down.

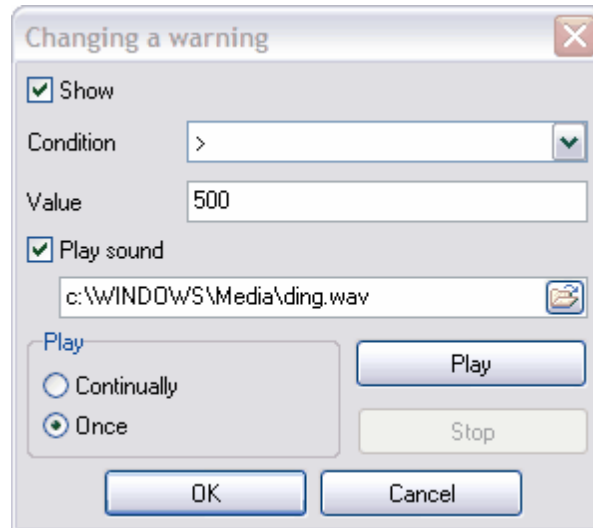


Fig. 9. Warning parameters.

You can configure the following parameters in the Warning Parameters dialog box:

1. The condition that will trigger it. While specifying the conditions, keep in mind that some conditions cannot be used for some data types. For example, string values can be checked only if they are equal;
2. The sound to play when this condition is met. Note that the sound can be played only when the condition is met for the first time or each time the tag changes and meets the condition.

Click the "OK" button to save the warning parameters. The warning will appear in the list after that.

To save the visualization block parameters, click the "OK" button in the Visualization Block Parameters dialog box. All changes will be applied after that.

## 4.2.6 Options menu

### Options

This menu item allows you to open the Options dialog box (fig.1).

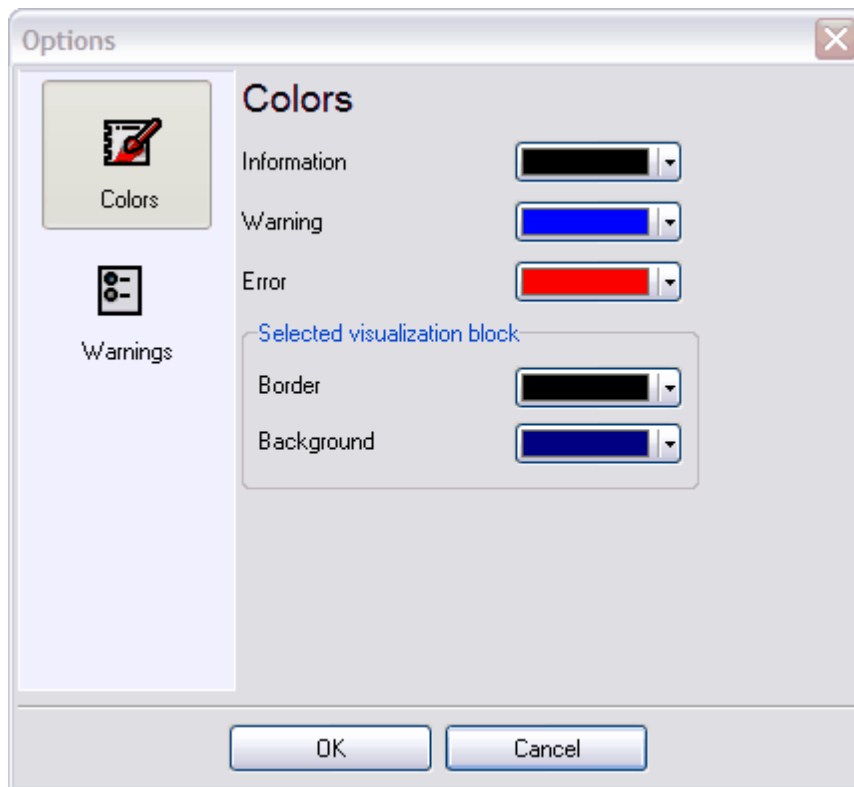


Fig.1. Options dialog box

Use the "Colors" tab to specify the colors for various elements of the program and for the notification window. Use the "Confirmations" tab to specify whether the program will ask for confirmation when you delete tabs and visualization blocks.

## Clear Log

The command allows you to clear the program log of all messages. The data is removed only from the program window. The log file the program creates during its work is not deleted.

## Forbid Configuration Changes

This option allows you to allow and forbid changes in the configuration. A warning message will be displayed in case of an attempt to change the parameters of tabs and visualization blocks, their size and position.

## Forbid Changes in Block Positions and Sizes

If this option is enabled, you will not be able to accidentally move or resize a visualization block. It is still possible to edit the parameters of blocks.

## 4.3 Using the program

To start working with the program, you should make several simple steps.

### 1. Adding a tab

Select the "Edit" - "New Tab" menu item. Use the new dialog box to specify the tab parameters (fig.1) and click the "OK" button. A new tab will be added in the program (fig.2).

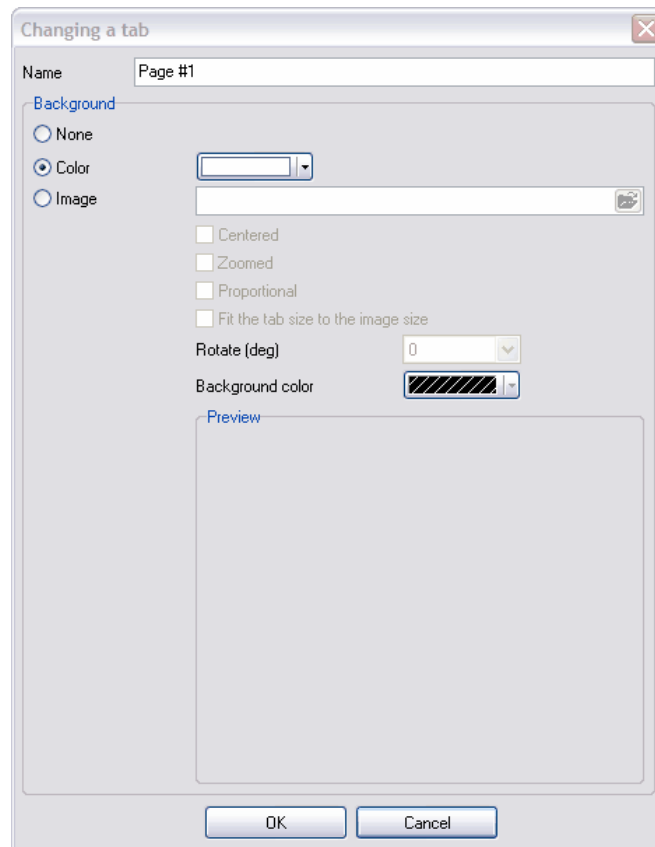


Fig.1. Adding a new tab

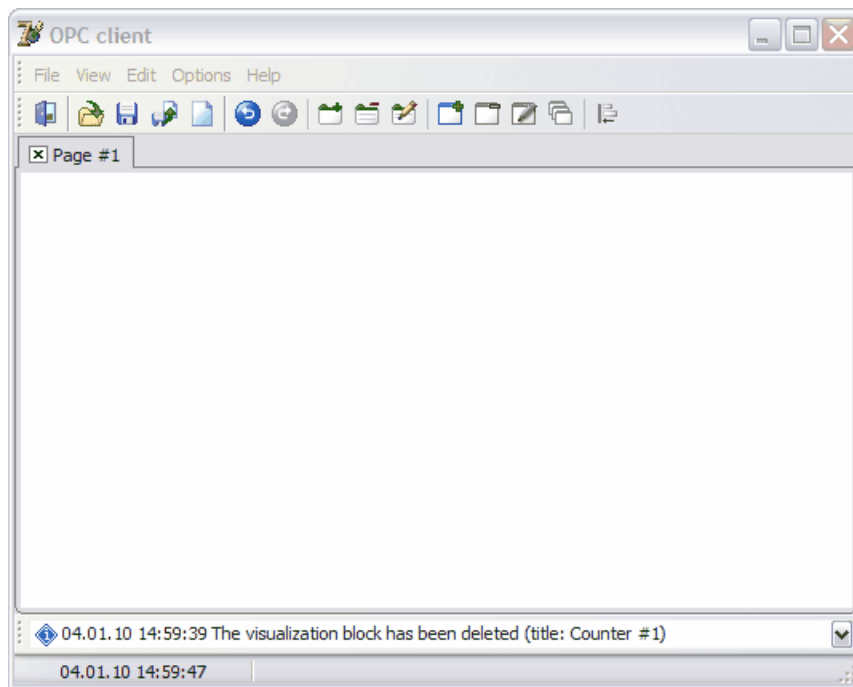


Fig.2. New tab

## 2. Adding a visualization block

Select the "Edit" - "New Block" menu item. Move the mouse pointer over the unoccupied area of the new tab (fig.3) till you see the mouse pointer turns into the cross. Hold down the left mouse button and specify the borders of the visualization block

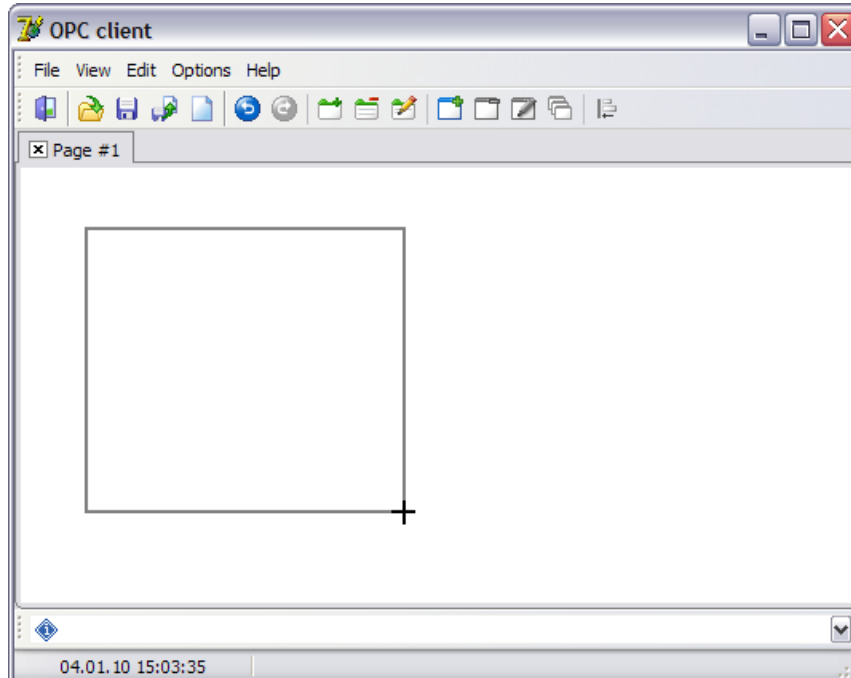


Fig.3. Creating a new visualization block

### 3. Selecting an OPC tag

When you release the left mouse button, the Visualization Block Parameters dialog box will be opened (fig.4). Switch to the "OPC tag" tab in this dialog box. Click the "Select a tag from the server" button on this tab.

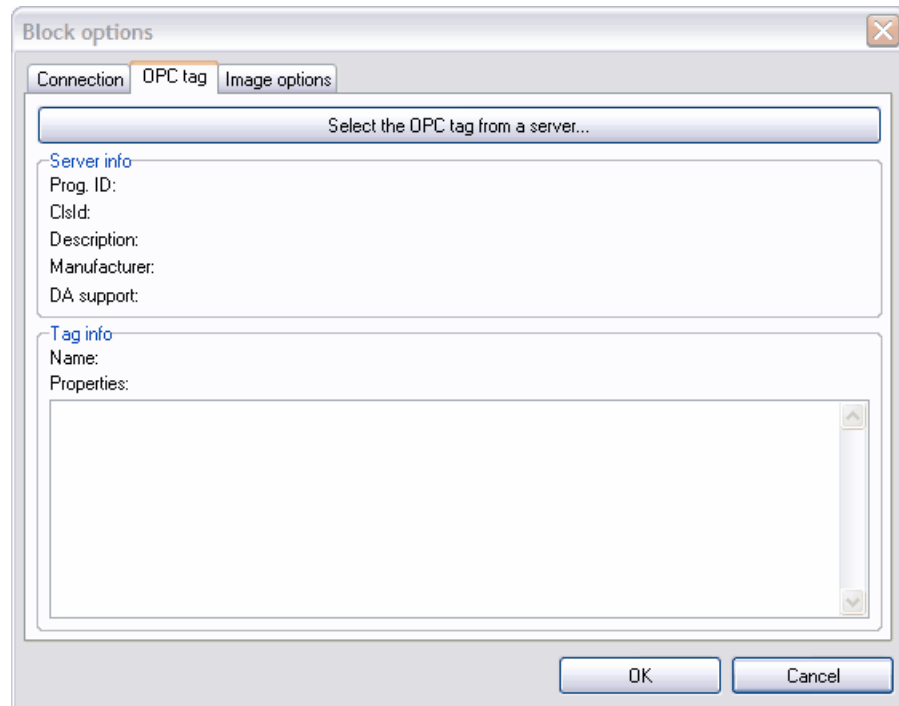
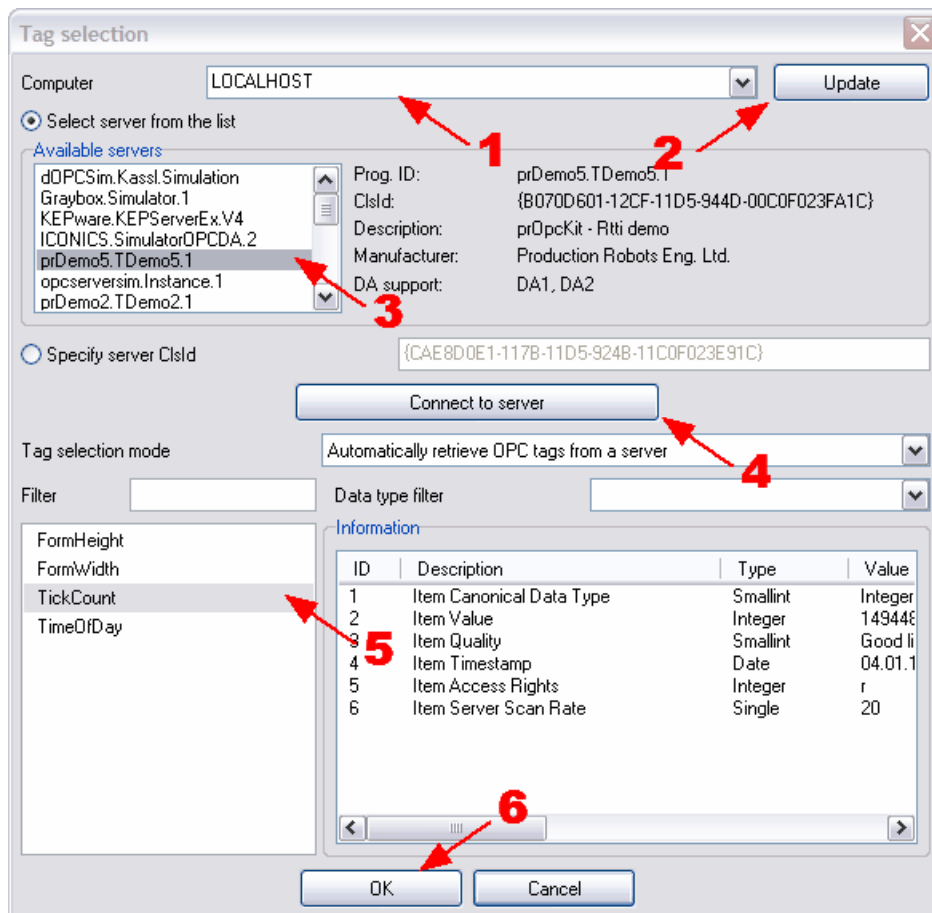


Fig.4. OPC tag parameters

1. Use another dialog box (fig.5) to enter the computer name where the OPC server is running. If the server is located on the same computer where the program is running, leave the field with the computer name empty;
2. Click the "Update" button;
3. Select the server from the list;
4. Click the "Connect to the server" button;
5. Select the tag from the list;
6. Click the "OK" button.



**Fig.5. Selecting an OPC tag**

After you click "OK", the information about the tag must appear on the "OPC tag" tab in the Visualization Block Parameters dialog box (fig.6).

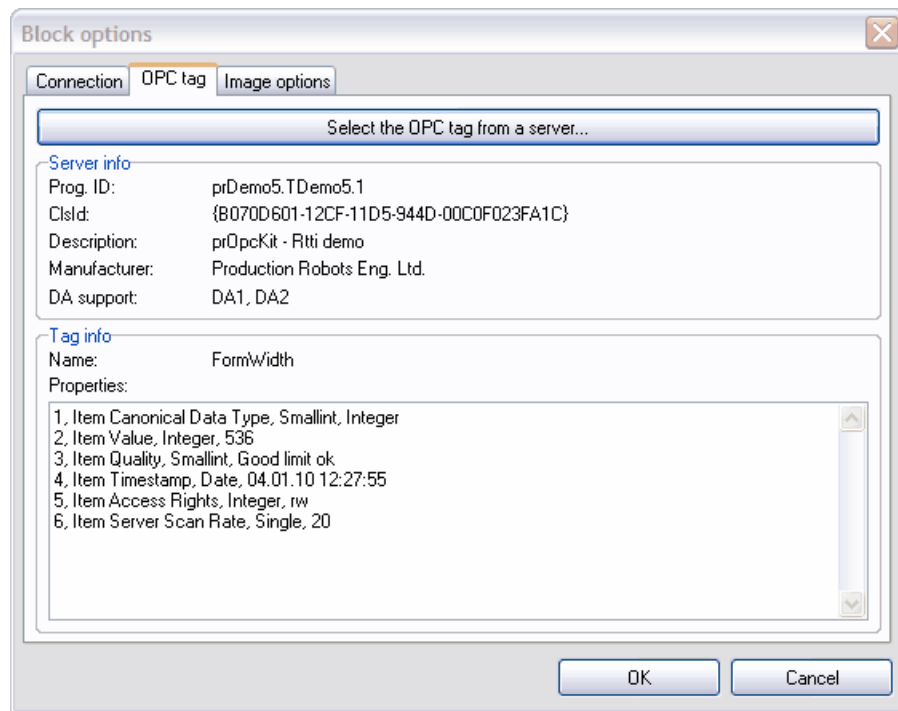


Fig.6. Information about the selected tag

#### 4. Activating a connection

Switch to the "Connection" tab and make sure that the "Active" option is enabled.

#### 5. Configuring the display parameters

Switch to the "Display Parameters" tab. You can configure a lot of parameters on this tab. At least, you should select and configure the indicator for the selected tag (fig.7). To do it:

1. Select "Indicator" from the "Element" list;
2. Enable the "Show" option;
3. Select the indicator type;
4. The appearance of the indicator will be shown in the preview window;
5. Use the parameter tree to configure the indicator parameters, if necessary;
6. Click the "OK" button to save all changes.

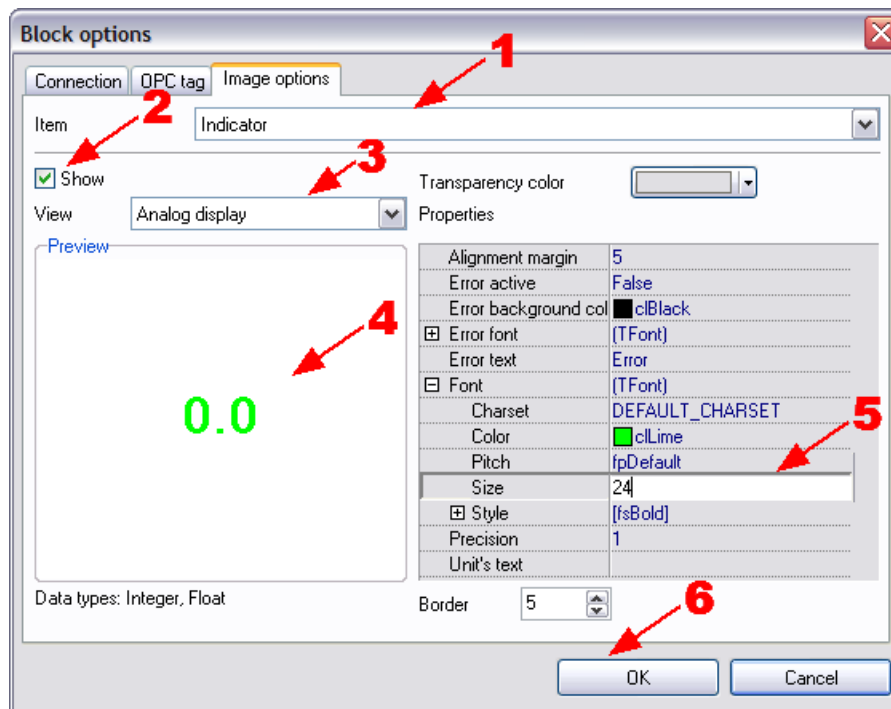


Fig.7. Indicator parameters

After you save changes, the corresponding block will appear on the tab (fig.8).

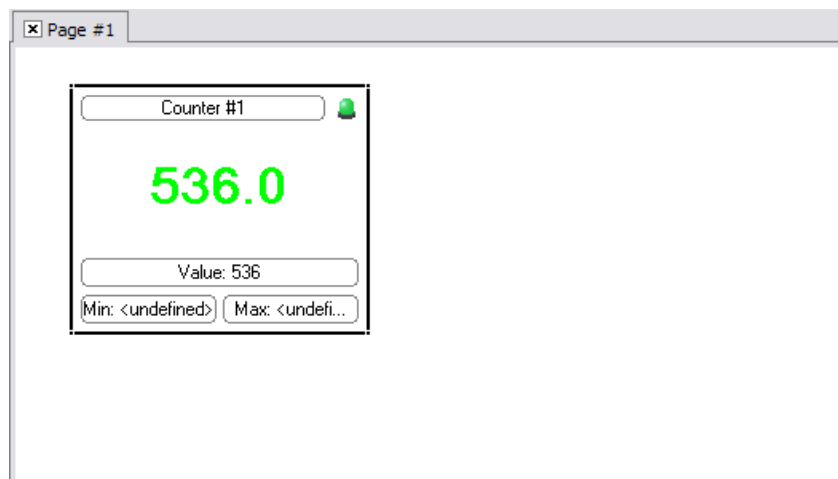


Fig.8. Working visualization block

This way you can add an unlimited number of blocks and get the operating monitoring window, as shown in fig.1 in the "[Introduction](#)" section.