

**The PDF/RTF logging plugin  
PRINTED MANUAL**

# PDF/RTF logging plugin

© 1999-2016 AGG Software

All rights reserved. No parts of this work may be reproduced in any form or by any means - graphic, electronic, or mechanical, including photocopying, recording, taping, or information storage and retrieval systems - without the written permission of the publisher.

Products that are referred to in this document may be either trademarks and/or registered trademarks of the respective owners. The publisher and the author make no claim to these trademarks.

While every precaution has been taken in the preparation of this document, the publisher and the author assume no responsibility for errors or omissions, or for damages resulting from the use of information contained in this document or from the use of programs and source code that may accompany it. In no event shall the publisher and the author be liable for any loss of profit or any other commercial damage caused or alleged to have been caused directly or indirectly by this document.

Printed: 28.11.2016

## **Publisher**

*AGG Software*

## **Production**

© 1999-2016 AGG Software

*<http://www.aggsoft.com>*

---

# Table of Contents

<b>Part 1 Introduction</b>	<b>1</b>
<b>Part 2 System requirements</b>	<b>1</b>
<b>Part 3 Installing PDF/RTF logging</b>	<b>2</b>
<b>Part 4 Glossary</b>	<b>3</b>
<b>Part 5 Setup</b>	<b>3</b>

## 1 Introduction

PDF logging or RTF logging plugin modules allow you to capture data flow from a serial printer to a Adobe PDF or a Microsoft Word RTF document. Modules create ready-to-use files, so you may re-print these files later, copy to another computer or create a backup copy.

Most printers are using ESC/P codes in their output. The EPSON created the ESC/P printer control language, the industry standard for simple, sophisticated, efficient operation of dot-matrix printers was born. With the scalable fonts, high-resolution color raster graphics, and advanced page handling available with ESC/P 2, EPSON has narrowed the gap between dot-matrix and page printers. Features previously found only on laser printers are now available at affordable dot-matrix printer prices.

Our modules support most ESC/P commands and allow to create PDF/RTF documents with different font types and graphics.

## 2 System requirements

The following requirements must be met for "PDF/RTF logging" to be installed:

**Operating system:** Windows 2000 SP4 and above, including both x86 and x64 workstations and servers. A latest service pack for the corresponding OS is required.

**Free disk space:** Not less than 5 MB of free disk space is recommended.

**Special access requirements:** You should log on as a user with Administrator rights in order to install this module.

The main application (core) must be installed, for example, Advanced Serial Data Logger.

### Notes for Microsoft Vista and above:

Since our software saves data to the registry and installs to the Program Files folder, the following requirements must be met:

1. You need Administrator rights to run and install our software
2. The shortcut icon of our software will be located on the desktop;
3. Windows Vista will ask for your confirmation to continue the installation.

NOTE: You can configure the user account only once in order not to see the above dialog box any more. Search Google for the solution of this problem.

### 3 Installing PDF/RTF logging

1. Close the main application (for example, Advanced Serial Data Logger) if it is running;
2. Copy the program to your hard drive;
3. Run the module installation file with a double click on the file name in Windows Explorer;
4. Follow the instructions of the installation software. Usually, it is enough just to click the "Next" button several times;
5. Start the main application. The name of the module will appear on the "Modules" tab of the "Settings" window if it is successfully installed.

If the module is compatible with the program, its name and version will be displayed in the module list. You can see examples of installed modules on fig.1-2. Some types of modules require additional configuration. To do it, just select a module from the list and click the "Setup" button next to the list. The configuration of the module is described below.

You can see some types of modules on the "Log file" tab. To configure such a module, you should select it from the "File type" list and click the "Advanced" button.

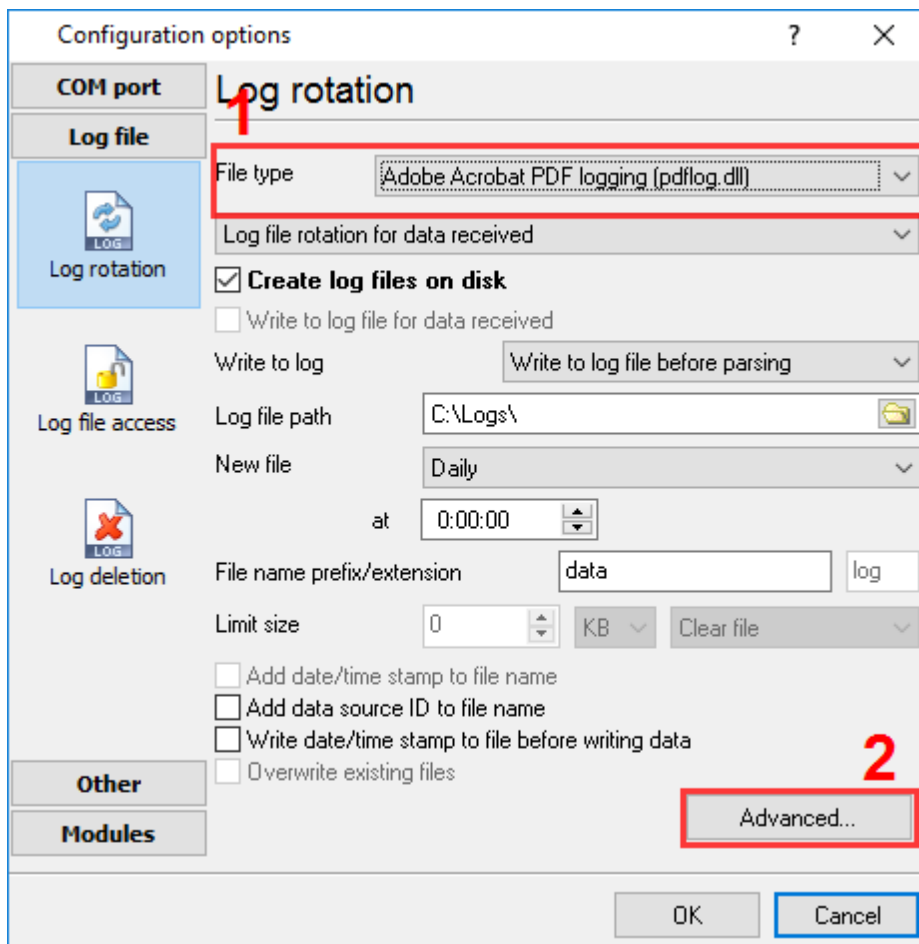


Fig.1. Example of installed module

## 4 Glossary

**Plug-in** - module

**Main program** – the program shell that uses this module. For example: Advanced Serial Data Logger

**Parser** – the module that processes the data flow singling out data packets from it and variables from data packets. These variables are used in data export modules after that.

**Core** - see "Main program".

## 5 Setup

### How to enable

This plugin can work in the following products only:

- Serial Printer Logger
- Data Logger Suite
- Advanced OPC Data Logger

If you want to enable this data logging plugin you should open the "Log rotation" settings and select the necessary file type (fig. 1). If you will click the "Advanced" button then you may adjust the document settings below.

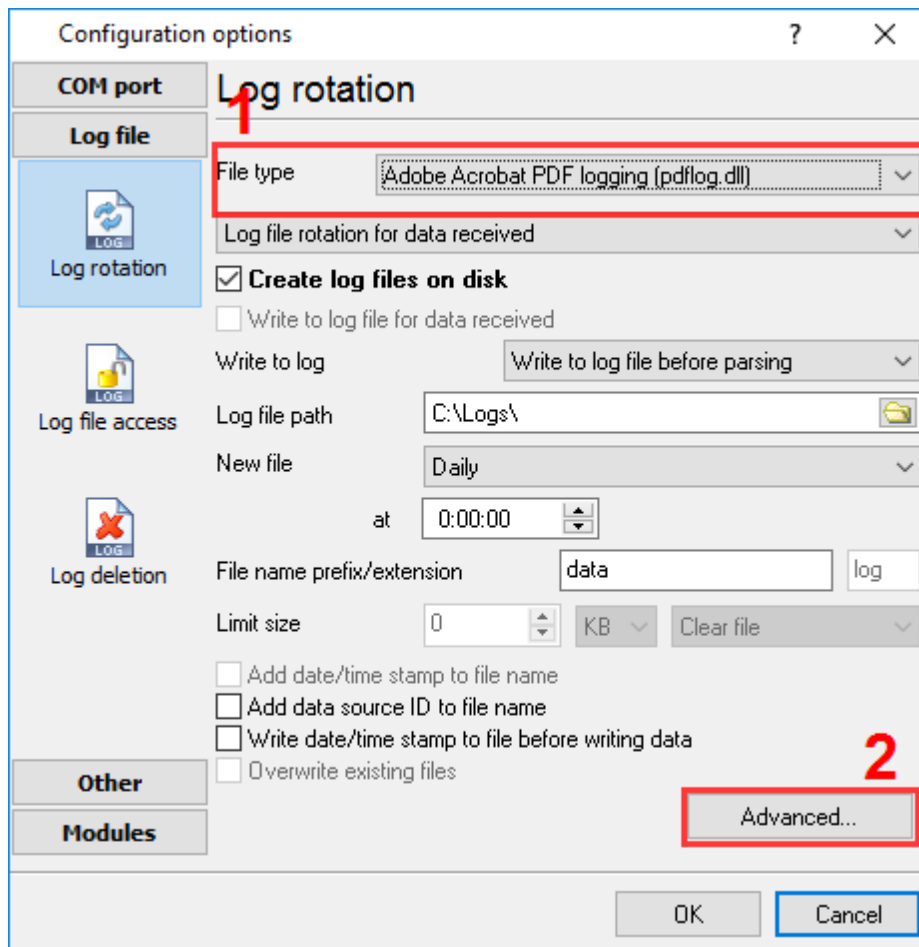


Fig.1 Enabling module

## Document settings

The module allows you to configure the following settings (fig.2):

- **Decode ESC/P control codes** - If you'll activate this option, then our module will extract information about a font type and graphics from a data flow. Therefore some options in the dialog window will be disabled.
- **LQ mode** - some printers support LQ mode. This mode allows you to select print quality (draft or LQ). In the LQ mode graphics have more density, so if you've found that graphics in a document isn't decoded properly, then try to enable/disable this options.
- **Paper settings** - select paper size in your document
- **Font type** - please, select a font type that you want to use in a document. Some printer fonts don't exist on a PC, so you should select a font that most compatible with your printer font. In most cases Courier is a best choice. If you want to use another font, then we recommend to use fonts with fixed size of characters like Fixedsys, Courier.
- **Font size** - of you've selected to decode ESC/P codes, then this option is disabled, because ESC/P controls font size, otherwise your may define size here.
- **Font charset** - if you're printing documents with non-latin characters, then please, select your charset here.
- **Bold, Italic** - allows you to specify a font type if you've not selected to decode ESC/P codes.
- **Wrap words** - allows you to split very long strings to two or more rows in a document.

- **Tab indent** - the module will replace a <TAB> ASCII code with this number of spaces. This option is available if you've selected to decode ESC/P codes.

Fig.2 Module settings

## Timeouts

Timeouts allows you to avoid data loss, damage and garbage.

- **Close file (ms)** - allows to close the document after this period. If the module didn't receive any bytes at this interval, then module writes data from an internal buffer to a file and closes a document. Next time the module opens document again and restores a last outputting position. Therefore this timeout allows you to increase a module performance, because decreases a number of "Open/Close" operations. If you'll specify zero in this field, then the module will not use this timeout.
- **Close file button** - allows to close file manually.
- **Reset state (ms)** - the module resets its state after this timeout. It allows you to restore an initial state of the module if a connection with a printer was broken while print a document. After this timeout the module restores default values of font style, size, graphics mode etc. If you'll specify zero in this field, then the module will not use this timeout.
- **Reset button** - allows to reset module state manually.
- **Initialize button** - this button resets the module state and additionally resets a last outputting



position.