

**"Send keystrokes" module
PRINTED MANUAL**

"Send keystrokes" module

© 1999-2008 AGG Software

All rights reserved. No parts of this work may be reproduced in any form or by any means - graphic, electronic, or mechanical, including photocopying, recording, taping, or information storage and retrieval systems - without the written permission of the publisher.

Products that are referred to in this document may be either trademarks and/or registered trademarks of the respective owners. The publisher and the author make no claim to these trademarks.

While every precaution has been taken in the preparation of this document, the publisher and the author assume no responsibility for errors or omissions, or for damages resulting from the use of information contained in this document or from the use of programs and source code that may accompany it. In no event shall the publisher and the author be liable for any loss of profit or any other commercial damage caused or alleged to have been caused directly or indirectly by this document.

Printed: 28.01.2008

Publisher

AGG Software

Production

© 1999-2008 AGG Software
<http://www.aggsoft.com>

Table of Contents

| | |
|--|----------|
| Part 1 Introduction | 1 |
| Part 2 System requirements | 1 |
| Part 3 Installing Send keystrokes | 2 |
| Part 4 Glossary | 5 |
| Part 5 Data export parameters setup | 6 |
| 1 Element's parameters | 7 |
| 2 Adding elements | 8 |
| 3 Removing an element | 8 |
| 4 Window capture | 8 |
| 5 Changes discard | 9 |
| 6 Saving changes | 9 |
| 7 Transmit test | 9 |
| Part 6 Troubles? | 9 |
| 1 Possible problems | 9 |

1 Introduction

Data export module "Send keystrokes" for our data loggers (for example Advanced Serial Data Logger) is used for exporting parsed variables to edit fields, belonging to other Windows applications windows. The module transmits received data to other Windows applications windows using Windows messages transmit system (keystrokes). With the help of this publication module, entry fields of the pointed by you applications will be filled automatically by data, received from your port or device.

Present module has the following peculiarities:

- Can be done simultaneous transmit of several variables, defined on configuration stage. At the same time for every variable can be set it's own transmit parameters, and also value of one variable can be transmitted to several windows;
- Setup ease. At configuration stage to define a window, to which value must be transmitted select the necessary window and entry field in this window and click the mouse, holding key Ctrl;
- All settings are saved at closing and restored automatically at the next program start.
- At closing the window to which data are transmitted, module saves its parameters and at the next opening data transmit is restored.
- Beside data transmit values, key combinations pointed by you can be also transmitted to entry fields, that lets automatically execute command, defined for present application.

2 System requirements

The following requirements must be met for "Send keystrokes" to be installed:

Operating system:

- Windows 95;
- Windows 95 OSR2;
- Windows 98;
- Windows Me;
- Windows NT4;
- Windows 2000;
- Windows XP (all editions) (both x86 and x64);
- Windows 2003 Server (both x86 and x64);
- Windows Vista (both x86 and x64).

Free disk space: Not less than 5 MB of free disk space is recommended.

Special access requirements: You should log on as a user with Administrator rights in order to install this module.

The main application (core) must be installed, for example, Advanced Serial Data Logger.

Notes for Microsoft Vista:

Since our software saves data to the registry and installs to the Program Files folder, the

following requirements must be met:

1. You need Administrator rights to run and install our software
2. The shortcut icon of our software will be located on the desktop;
3. Windows Vista will ask for your confirmation to continue the installation.

NOTE: You can configure the user account only once in order not to see the above dialog box any more. Search Google for the solution of this problem.

3 Installing Send keystrokes

1. Close the main application (for example, Advanced Serial Data Logger) if it is running;
2. Copy the program to your hard drive;
3. Run the module installation file with a double click on the file name in Windows Explorer;
4. Follow the instructions of the installation software. Usually, it is enough just to click the "Next" button several times;
5. Start the main application. The name of the module will appear on the "Modules" tab of the "Settings" window if it is successfully installed.

If the module is compatible with the program, its name and version will be displayed in the module list. You can see examples of installed modules on fig.1-2. Some types of modules require additional configuration. To do it, just select a module from the list and click the ["Setup"](#) button next to the list. The configuration of the module is described below.

You can see some types of modules on the "Log file" tab. To configure such a module, you should select it from the "File type" list and click the "Advanced" button.

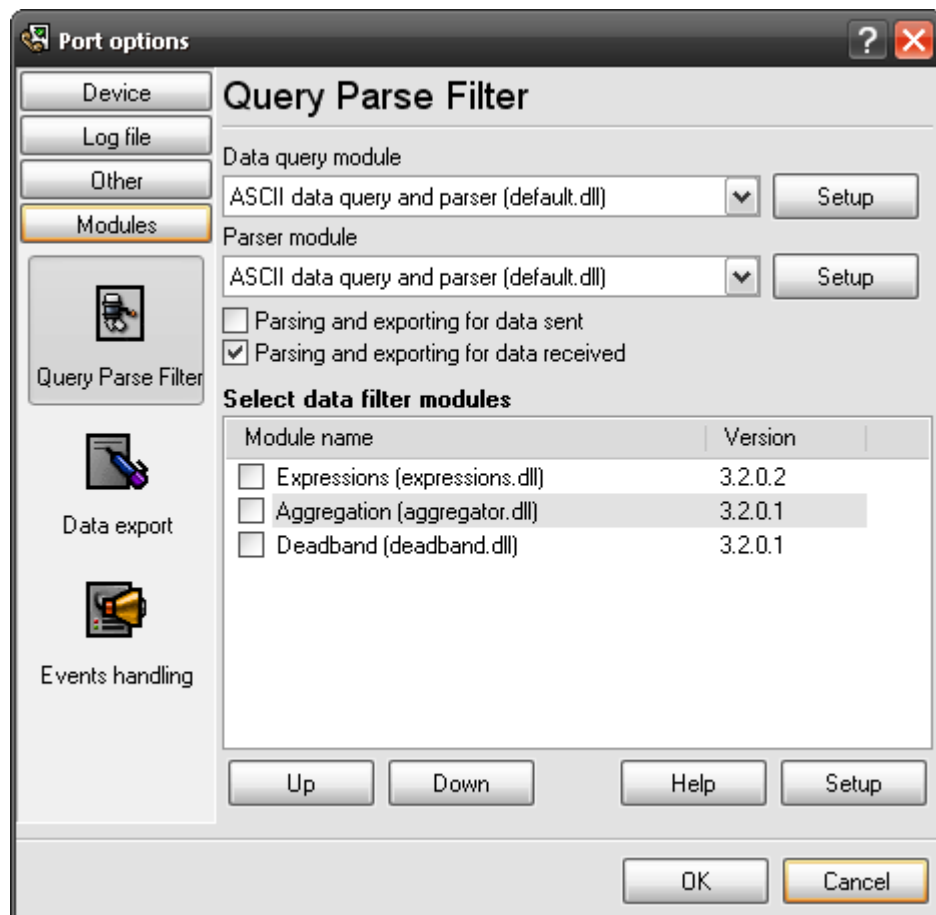


Fig.1. Examples of installed modules

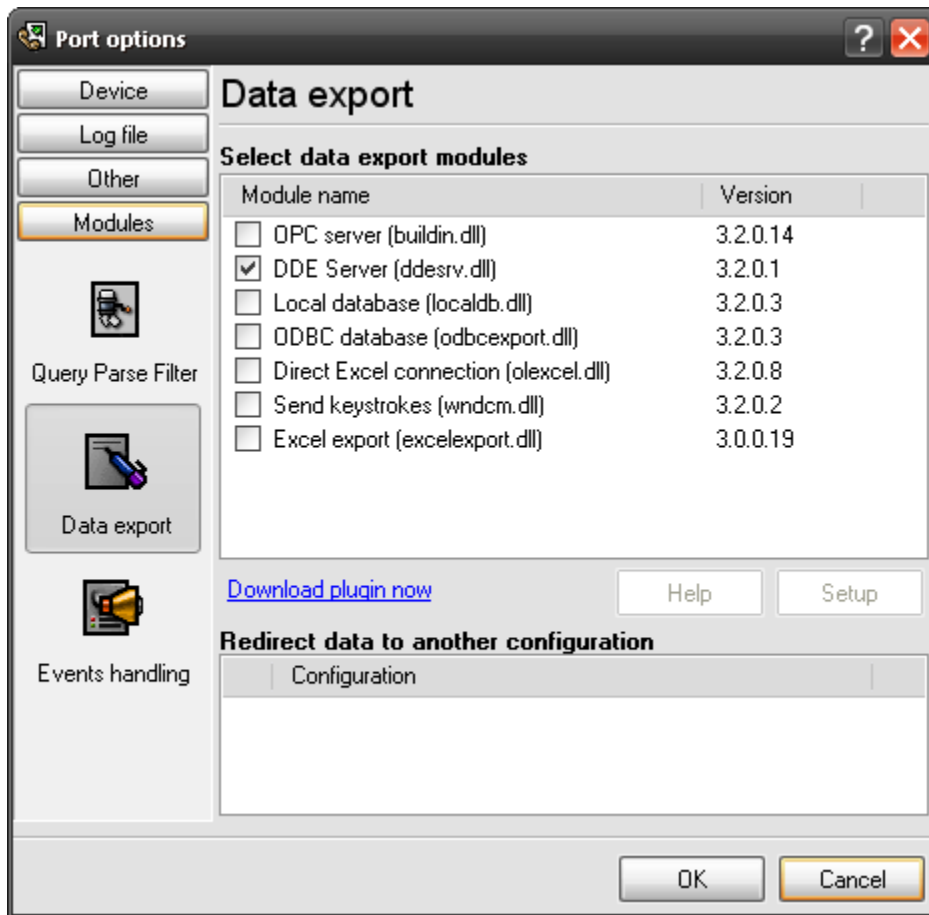


Fig.2. Examples of installed modules

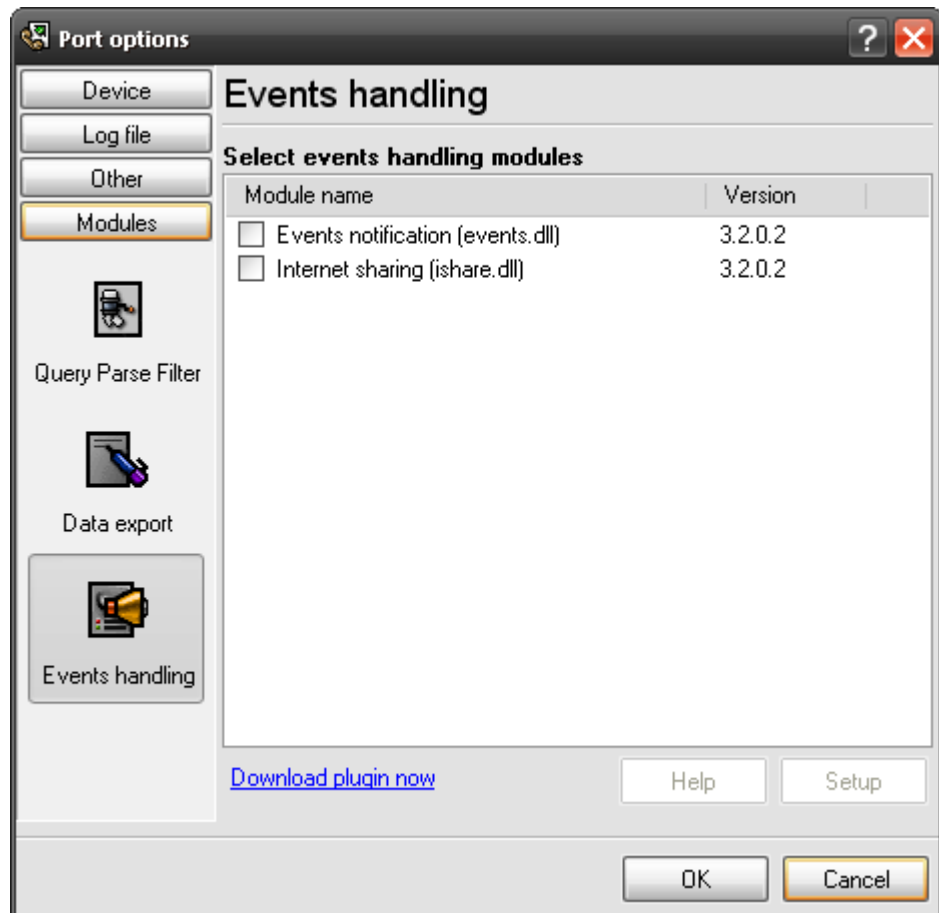


Fig.3. Examples of installed modules

4 Glossary

Plug-in - module

Main program – the program shell that uses this module. For example: Advanced Serial Data Logger

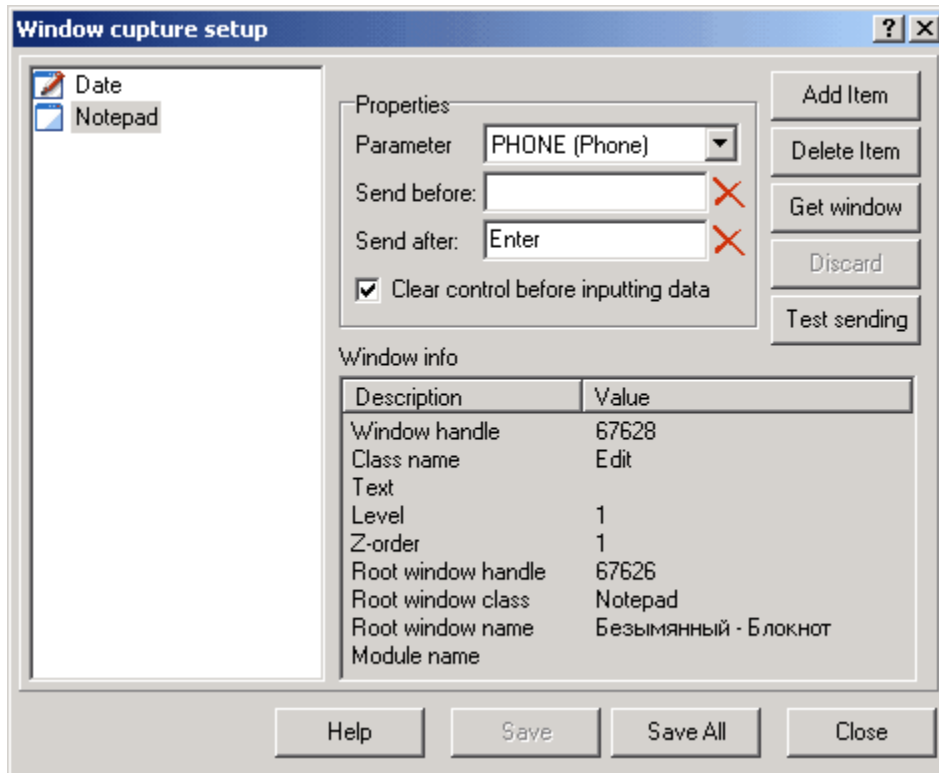
Parser – the module that processes the data flow singling out data packets from it and variables from data packets. These variables are used in data export modules after that.

Core - see "Main program".

5 Data export parameters setup

Data transmit parameters setting is executed with the help of setting window, which is called from the main program .

Transmit parameters setup window



In the left window part is placed setup elements list. At selecting element from the list in the right window part, its corresponding settings are viewed.

- In the field <Parameter name> is pointed parameter name, transmitted by the main program.
- Field <Send before> contains key combination, which will be sent to the window before values transmit.
- Field <Send after> contains key combination, which will be sent to the window after values transmit.
- <Clear control before inputting data> defines if it is necessary to clear window before values transmit
- The list <Window info> contains information about window, to which value will be transmitted.

To change some setup value, input new value to the corresponding field.

To rename element, click right mouse button and select item <Rename item> from context menu.

Adding element

To add a new element press button <Add item>, input element's name. Then input all the necessary setup values for the new element. After you have shown all data save changes,

pressing button <Save>

Window capture

For every element must be defined a window, where to parameter values will be sent. To define a window for an element press button Get window, find the necessary window and click it, holding key Ctrl

Remove an element

To remove an element from the list, mark out the necessary element in the list and press button <Delete item>

Discard changes

If you have made any changes in the element setup, in the list this element will be viewed with icon in the form of a window with pencil. To discard changes for the selected element, press button <Discard>.



Save changes

If you have made any changes in element setup or added a new element, to save changes select the necessary element from the list and press button <Save>. Pressing button <Save all> will be saved all changes for all elements.

Transmit test

After window was defined (with the help of button<Get window>) you can make data transmit test for this window. For that press button <Test sending>. To the selected window will be sent a string "Test data from Advanced Serial Data Logger" and key set given in the field <Send before>and <Send after>

Load from file and save settings to file

Input by you parameters and data transmit settings can be saved to file. For that press button  which is placed under parameters list, and show file name for saving in the displayed window. To load parameters from the earlier saved file, press button  placed under parameters list and select the necessary file in the displayed window.


5.1 Element's parameters


Every element contains parameters set, with the help of which module defines data transmitted by the main program, which window to send.

At setup show the following parameters:

- In the field <**Parameter name**> parameter name is shown, transmitted by the main program.
- At data transmit module will search on this name parameter in the transmitted parameters list and transmit its value to the corresponding window.
- Field <**Send before**> contains key combination, which will be sent to the window before

values transmit. To input data to this field you can in two modes, adding and editing. To

switch between modes press button 

- In add mode pressed key combinations are added to the string end, in edit mode the selected combination is changed to the new one or selected combination is removed, if you press key del or back space. To clean the field press button 
- Field <**Send after**> contains key combination, which will be sent to the field after values transmit. Input and editing in the present field is executed the same way as in the field <Send before>.
- <**Clear control before inputting data**> defines if it is necessary to clean window before values transmit
- The list <**Window info**> contains information about window, to which value will be transmitted. To define the necessary window press button <Get window>.

5.2 Adding elements

Button <**Add item**> is for adding a new element. Pressing this button in element's navigation list will be displayed new string with entry field. Input element's name and press Enter.

Note: New element's name must be unique. If you input repeated name message with offer to input another name will be displayed.

After you have added a new element you must:

- Input parameter name, with which the present element in the field <Parameter name> will be connected
- Select the window, to which values of the shown parameter will be transmitted, pressing button <Get window>.

5.3 Removing an element

Button <**Delete item**> serves to remove the selected element. To remove element from the list, select the necessary element in the list , and press button <Delete item>.

5.4 Window capture

For every element must be defined a window, to which parameter values will be sent. To define window for an element press button <**Get window**>. Then select the necessary window on desktop, select editing element in it (moving mouse over this element it will be marked out by red rectangle) and click the mouse, holding key Ctrl. Information about selected window will be viewed in the list <Window info>.

5.5 Changes discard

Button <**Discard**> lets make discard of the changes for the element. If you have made some changes in the element's settings, in the elements list this element will be viewed with icon in the form of a window with pencil. To discard changes select the necessary element from the list and press button <Discard>.

5.6 Saving changes

At pressing button <**Save**> changes for the selected element will be saved.
At pressing button <**Save all**> changes for all elements will be saved.

5.7 Transmit test

Button <Send keys> is for selected window test data transmit. After the window have been defined (with the help of <Get window> button), You can make data transmit test for this window. For that press button <Test sending>. To the selected window will be sent the string "Test data from Advanced Serial Data Logger" and key set shown in the field <Send keys>.

6 Troubles?

6.1 Possible problems

No data for publication/exporting – no data is passed for exporting. Solution: configure the parser, make sure that one or more variables are declared in the parser.

Error on binding variable with name %s [%s] – the error usually occurs if data does not correspond to the specified format. For example, the date and time format does not correspond to the data.

Unable to disconnect from the database [%s] and **Unable to connect to a database [%s]** – it is impossible to connect/disconnect to/from the database. You should check the parameters of the database connection. The analysis of the additional information will help you locate the error.

Database access error [%s]. Stop operations with the database? – the message appears if an error occurs during an attempt to execute an SQL query if the second variant of reacting to errors is selected. The message implies a "Yes" or "No" answer. The analysis of the additional information will help you locate the error.

Unable to verify your SQL script [%s] – the message appears when an attempt to analyze your SQL query fails. Check if the syntax of your SQL query is correct.

Tested successfully – the message appears if your database connection is successfully tested. It requires no additional actions.

Database isn't used – the message appears if the module is temporarily disabled (the "Temporarily disabled" check box is selected) or the database name field is empty. Check the connection parameters.

Database isn't selected - the message appears if the database type is not selected. Check the connection parameters.

Database: %s – %s contains the database name. The message appears if the database connection is successful. Usually, you see it when you call the module for the first time. It requires no additional actions.

Invalid data block length (columns=%d,length=%d) – an internal application error. It means that the data sent by the parser is in an invalid format. Perhaps, you are using the module incompatible with the version of the Advanced Serial Data Logger kernel. Update the versions of both the kernel and the module.

The time of connection is not due yet (%d,%d) – the message appears during an attempt to connect to the database after the connection to it has been lost and the "Reconnect after" option is enabled. No additional actions are required.

Invalid procedure call. Bad arguments –an attempt to call the module using invalid parameters. Perhaps, you are using the module incompatible with the version of the Advanced Serial Data Logger kernel. Update the versions of both the kernel and the module.

Writing to the database is complete - the message appears if your queue of SQL queries is successfully executed. It requires no additional actions.

Writing to the database is complete with errors – the message appears if the executing your queue of SQL queries was interrupted by an error. It requires no additional actions.

Your SQL is empty. Please, specify some SQL text first – the message appears if you do not enter the text for your SQL query. Check if the options on the "SQL queue" tab are configured correctly.

Invalid temporary path – the path to the temporary file specified by you does not exist. Enter a new path in the "Temporary folder" field on the "Errors handling" tab.

%s, %d – will be replaced by additional information.