

COM Port Stress Test

COM Port Stress Test

©2006-2025 AGG Software

All rights reserved. No parts of this work may be reproduced in any form or by any means - graphic, electronic, or mechanical, including photocopying, recording, taping, or information storage and retrieval systems - without the written permission of the publisher.

Products that are referred to in this document may be either trademarks and/or registered trademarks of the respective owners. The publisher and the author make no claim to these trademarks.

While every precaution has been taken in the preparation of this document, the publisher and the author assume no responsibility for errors or omissions, or for damages resulting from the use of information contained in this document or from the use of programs and source code that may accompany it. In no event shall the publisher and the author be liable for any loss of profit or any other commercial damage caused or alleged to have been caused directly or indirectly by this document.

Printed: March 2025

Publisher

AGG Software

Production

©2006-2025 AGG Software

<http://www.aggsoft.com>

Table of Contents

Part 1 Introduction	1
Part 2 License	1
Part 3 System requirements	2
Part 4 Installation	3
Part 5 Usage	3

1 Introduction

COM Port Stress Test is a tool for testing a COM or RS232 port (device), that generates a serial stream of data with random communication settings. Stress test put a greater emphasis on robustness and error handling under a heavy load, than on what would be considered correct behavior under normal circumstances in your application. The goals of such tests may be to ensure the application doesn't crash in conditions of random data flow.

COM Port Stress Test may help developers or experts test their hardware, software and applications with extreme conditions. This program can generate a very fast data flow, randomly change baudrate, flow control or RTS and DTR state.

Our software creates a load on a serial port by simulating the activity of a serial port software and tests two ports at the same time, so you may test null-modem cables.

Key features:

- supports COM, RS232, RS485 (with converter) ports;
- supports virtual serial port, usb serial ports;
- can test two ports at the same time;
- can read/write a data stream from/to a COM port;
- can change communication parameters randomly;
- can change RTS or DTR randomly;
- configurable a write buffer size;
- configurable a load value;
- displays in/out speed and bytes count.

2 License

Copyright © AGG Software.
All Rights Reserved

SOFTWARE LICENSE

FREE EDITION Version

The free edition version of this software may be used for your purposes at the user's own risk for an unlimited period. The free edition version may be freely distributed, provided the distribution package is not modified. No person or company may charge a fee for the distribution of COM Port Stress Test without written permission from the copyright holder.

Whilst every care has been taken in the construction and testing of this software, it is supplied subject to the condition that the user undertakes to evaluate the suitability of the control for his/her purposes. AGG Software makes no representation of the software's

suitability for any purpose, and the user agrees that AGG Software has no responsibility for any loss or damage occasioned by the use of this software.

TO THE MAXIMUM EXTENT PERMITTED BY APPLICABLE LAW, THE SOFTWARE AND DOCUMENTATION ARE PROVIDED "AS IS" AND AGG SOFTWARE DISCLAIMS ALL OTHER WARRANTIES AND CONDITIONS, EITHER EXPRESS OR IMPLIED, INCLUDING, BUT NOT LIMITED TO, IMPLIED WARRANTIES OF MERCHANTABILITY, FITNESS FOR A PARTICULAR PURPOSE, CONFORMANCE WITH DESCRIPTION, TITLE AND NON-INFRINGEMENT OF THIRD PARTY RIGHTS.

TO THE MAXIMUM EXTENT PERMITTED BY APPLICABLE LAW, IN NO EVENT SHALL AGG SOFTWARE BE LIABLE FOR ANY INDIRECT, INCIDENTAL, CONSEQUENTIAL, SPECIAL OR EXEMPLARY DAMAGES OR LOST PROFITS WHATSOEVER (INCLUDING, WITHOUT LIMITATION, DAMAGES FOR LOSS OF BUSINESS PROFITS, BUSINESS INTERRUPTION, LOSS OF BUSINESS INFORMATION, OR ANY OTHER PECUNIARY LOSS) ARISING OUT OF THE USE OR INABILITY TO USE THE SOFTWARE PRODUCT, EVEN IF AGG SOFTWARE HAS BEEN ADVISED OF THE POSSIBILITY OF SUCH DAMAGES. IN ANY CASE, AGG SOFTWARE'S CUMULATIVE AND ENTIRE LIABILITY TO YOU OR ANY OTHER PARTY FOR ANY LOSS OR DAMAGES RESULTING FROM ANY CLAIMS, DEMANDS OR ACTIONS ARISING OUT OF OR RELATING TO THIS AGREEMENT SHALL NOT EXCEED THE PURCHASE PRICE PAID FOR THIS LICENSE.

Should any term of these terms and conditions be declared void or unenforceable by any court of competent jurisdiction, such declaration shall have no effect on the remaining terms hereof.

If you do not agree to these conditions you should not install this software.

3 System requirements

To run the program one of the following operation systems is needed:

Windows 95 and higher OS (both x86 and x64, including Servers).

Free disk space: Recommended at least 5 MB of extra disk space.

Special login requirements: You must be logged on as a user with Administrator privileges to run our software. It is necessary for access certain registry keys and write special filter driver registry entries.

Vista notes:

1. You need administrator privileges to run our software;
2. The desktop icon of our setup will contain a shield;
3. Windows Vista will ask your permission to continue.

Note: You may disable **User Account Control** manager and you'll never see the dialog above. Please, search Google for an solution.

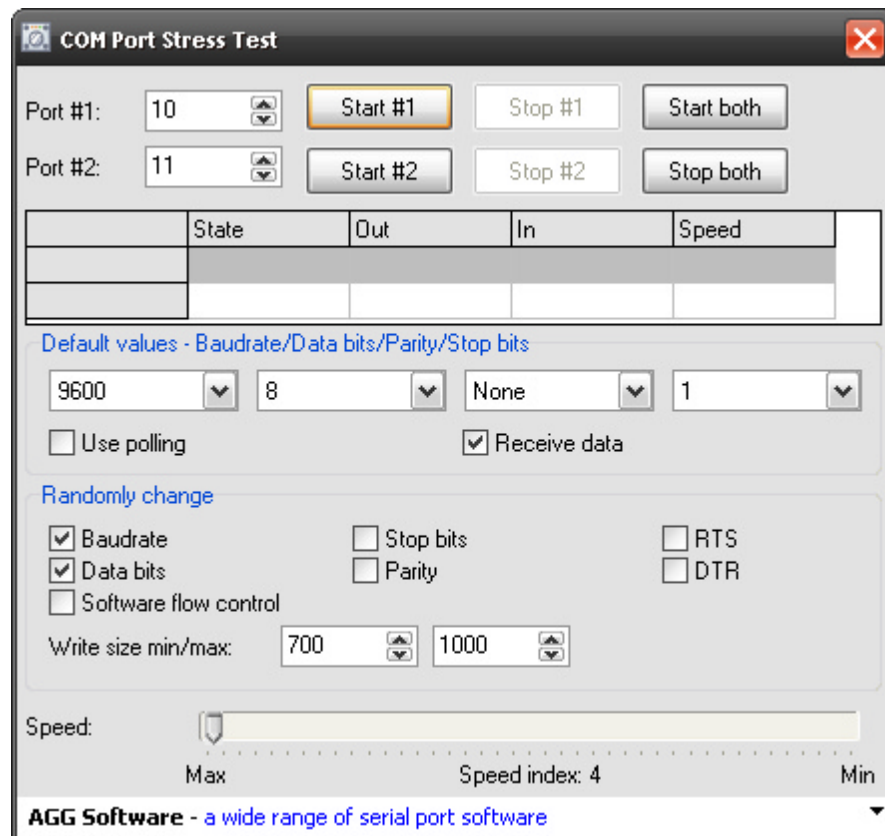
4 Installation

1. Download the latest version at: <https://www.aggsoft.com/download/>
2. Double click it using any file manager or Windows Explorer in order to start installation process.
3. Follow the prompts given: select the destination path, choose shortcuts you wish to be created and finish the installation.
4. Navigate either to the Start Menu and locate COM Port Stress Test in Programs submenu or double-click the icon created on the desktop.

5 Usage

Device

When you launch the application, you will see the following:



The program interface is very simple:

1. Select a communication port: serial port;
2. Configure default parameters for the serial port;
3. Click the "Start" button.

If you want to test two port at the same time, then repeat steps 1,3 for second serial port.

The **serial port** requires following communication parameters:

1. Port number;
2. Communication parameters: baudrate, data bits, parity, stop bits;
3. Use polling - if you'll activate this option, then the program will poll the serial port periodically, otherwise the program will use a serial port event word;
4. Receive data - the program will receive data from the serial port.

Test conditions

The "Randomly change" group allows to specify test conditions. If you'll activate one or more options in this group, then program will randomly change the corresponding communication parameter while testing a serial port.

Write size - this fields allows to define a size of the write buffer. The program will allocate a buffer with this size and write to a serial port in one write operation.

Speed - you can configure a data transfer speed with help of this track bar.

	State	Out	In	Speed
COM10	9600,8,N,1	940	1726	46,41 KB/s
COM11	9600,8,N,1	781	1656	44,91 KB/s

Default values - Baudrate/Data bits/Parity/Stop bits

9600 8 None 1

☐ Use polling ☒ Receive data

Randomly change

☐ Baudrate ☐ Stop bits ☐ RTS
☐ Data bits ☐ Parity ☐ DTR
☐ Software flow control

Write size min/max: 700 1000

Speed: Max Speed index: 4 Min

AGG Software - a wide range of serial port software