



**The File import plugin  
PRINTED MANUAL**

# File import plugin

©2006-2016 AGG Software

All rights reserved. No parts of this work may be reproduced in any form or by any means - graphic, electronic, or mechanical, including photocopying, recording, taping, or information storage and retrieval systems - without the written permission of the publisher.

Products that are referred to in this document may be either trademarks and/or registered trademarks of the respective owners. The publisher and the author make no claim to these trademarks.

While every precaution has been taken in the preparation of this document, the publisher and the author assume no responsibility for errors or omissions, or for damages resulting from the use of information contained in this document or from the use of programs and source code that may accompany it. In no event shall the publisher and the author be liable for any loss of profit or any other commercial damage caused or alleged to have been caused directly or indirectly by this document.

Printed: 28.11.2016

## **Publisher**

*AGG Software*

## **Production**

©2006-2016 AGG Software

*<http://www.aggsoft.com>*

---

# Table of Contents

<b>Part 1 Introduction</b>	<b>1</b>
<b>Part 2 System requirements</b>	<b>1</b>
<b>Part 3 Installing File import</b>	<b>1</b>
<b>Part 4 Glossary</b>	<b>2</b>
<b>Part 5 Setup</b>	<b>2</b>

## 1 Introduction

The File import module for our loggers adds a menu item to the File menu in the application's main window. You can use that menu item to start the importing of data from an earlier-created log file, regardless of which data transfer interface is used by the logger.

## 2 System requirements

The following requirements must be met for "File import" to be installed:

**Operating system:** Windows 2000 SP4 and above, including both x86 and x64 workstations and servers. A latest service pack for the corresponding OS is required.

**Free disk space:** Not less than 5 MB of free disk space is recommended.

**Special access requirements:** You should log on as a user with Administrator rights in order to install this module.

The main application (core) must be installed, for example, Advanced Serial Data Logger.

### Notes for Microsoft Vista and above:

Since our software saves data to the registry and installs to the Program Files folder, the following requirements must be met:

1. You need Administrator rights to run and install our software
2. The shortcut icon of our software will be located on the desktop;
3. Windows Vista will ask for your confirmation to continue the installation.

NOTE: You can configure the user account only once in order not to see the above dialog box any more. Search Google for the solution of this problem.

## 3 Installing File import

1. Close the main application (for example, Advanced Serial Data Logger) if it is running;
2. Copy the program to your hard drive;
3. Run the module installation file with a double click on the file name in Windows Explorer;
4. Follow the instructions of the installation software. Usually, it is enough just to click the "Next" button several times;
5. Start the main application. The name of the module will appear on the "Modules" tab of the "Settings" window if it is successfully installed.

If the module is compatible with the program, its name and version will be displayed in the module list. You can see examples of installed modules on fig.1-2. Some types of modules require additional configuration. To do it, just select a module from the list and click the "Setup" button next to the list. The configuration of the module is described below.

You can see some types of modules on the "Log file" tab. To configure such a module, you should select it from the "File type" list and click the "Advanced" button.

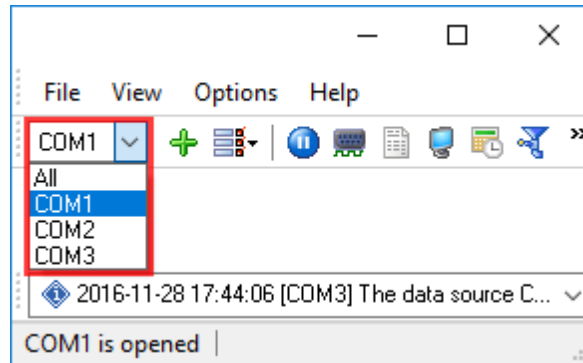


Fig.1. Example of installed module

## 4 Glossary

**Plug-in** - module

**Main program** – the program shell that uses this module. For example: Advanced Serial Data Logger

**Parser** – the module that processes the data flow singling out data packets from it and variables from data packets. These variables are used in data export modules after that.

**Core** - see "Main program".

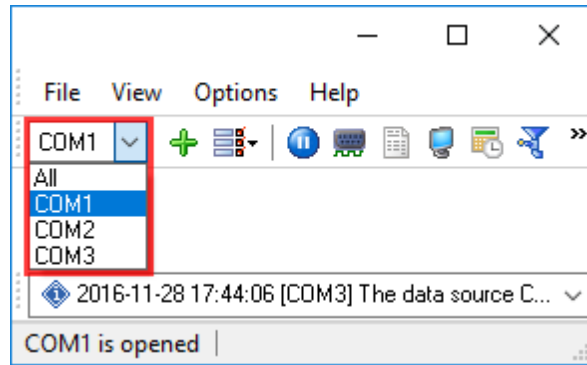
## 5 Setup

This module doesn't have a separate dialog box for the settings. The data from the log file are processed according to the current configuration.

**Please note** that the module doesn't check whether the data from that log file were imported before. For example, duplicate entries may appear in the database if the configuration enables the application to export data to the database.

### Using the application

1. Select the necessary configuration in the application's main window (Figure 1).
2. Suspend the receiving of new data from that data source.
3. If the selected configuration enables data logging, temporarily turn off the logging via the settings. Otherwise the imported data will be written to the log file, which may cause duplicate entries.



**Figure 1: Configurations (data sources)**

4. Click "File -> Import log file with data" in the menu.
5. When the dialog box appears, select one or more log files.
6. Click the "OK" button and start the importing process.
7. Wait for the process to complete. The data importing progress will be displayed in the application's main window.