



**The Send keystrokes plugin
PRINTED MANUAL**

Send keystrokes plugin

© 1999-2020 AGG Software

All rights reserved. No parts of this work may be reproduced in any form or by any means - graphic, electronic, or mechanical, including photocopying, recording, taping, or information storage and retrieval systems - without the written permission of the publisher.

Products that are referred to in this document may be either trademarks and/or registered trademarks of the respective owners. The publisher and the author make no claim to these trademarks.

While every precaution has been taken in the preparation of this document, the publisher and the author assume no responsibility for errors or omissions, or for damages resulting from the use of information contained in this document or from the use of programs and source code that may accompany it. In no event shall the publisher and the author be liable for any loss of profit or any other commercial damage caused or alleged to have been caused directly or indirectly by this document.

Printed: 8/6/2020

Publisher

AGG Software

Production

© 1999-2020 AGG Software

<http://www.aggsoft.com>

Table of Contents

Part 1 Introduction	1
Part 2 System requirements	1
Part 3 Installing Send keystrokes	1
Part 4 Glossary	2
Part 5 User Manual	3
Part 6 Troubles?	5
1 Possible problems	5

1 Introduction

The data export module "Send keystrokes" for our data logger allows you to send parsed data as keystrokes to other Windows applications.

The plugin has the following features:

- It can send values of several parser variables at the same time. You may define individual sending parameters for each the variable;
- You may define additional key sequences before and after each variable;
- You may easily select a target window by pointing it by a cursor;
- You may choose to always send data to the topmost window and a selected edit field.

2 System requirements

The following requirements must be met for "Send keystrokes" to be installed:

Operating system: Windows 2000 SP4 and above, including both x86 and x64 workstations and servers. A latest service pack for the corresponding OS is required.

Free disk space: Not less than 5 MB of free disk space is recommended.

Special access requirements: You should log on as a user with Administrator rights in order to install this module.

The main application (core) must be installed, for example, Advanced Serial Data Logger.

Notes for Microsoft Vista and above:

Since our software saves data to the registry and installs to the Program Files folder, the following requirements must be met:

1. You need Administrator rights to run and install our software
2. The shortcut icon of our software will be located on the desktop;
3. Windows Vista will ask for your confirmation to continue the installation.

NOTE: You can configure the user account only once in order not to see the above dialog box any more. Search Google for the solution of this problem.

3 Installing Send keystrokes

1. Close the main application (for example, Advanced Serial Data Logger) if it is running;
2. Copy the program to your hard drive;
3. Run the module installation file with a double click on the file name in Windows Explorer;
4. Follow the instructions of the installation software. Usually, it is enough just to click the "Next" button several times;

5. Start the main application. The name of the module will appear on the "Modules" tab of the "Settings" window if it is successfully installed.

If the module is compatible with the program, its name and version will be displayed in the module list. You can see examples of installed modules on fig.1-2. Some types of modules require additional configuration. To do it, just select a module from the list and click the "Setup" button next to the list. The configuration of the module is described below.

You can see some types of modules on the "Log file" tab. To configure such a module, you should select it from the "File type" list and click the "Advanced" button.

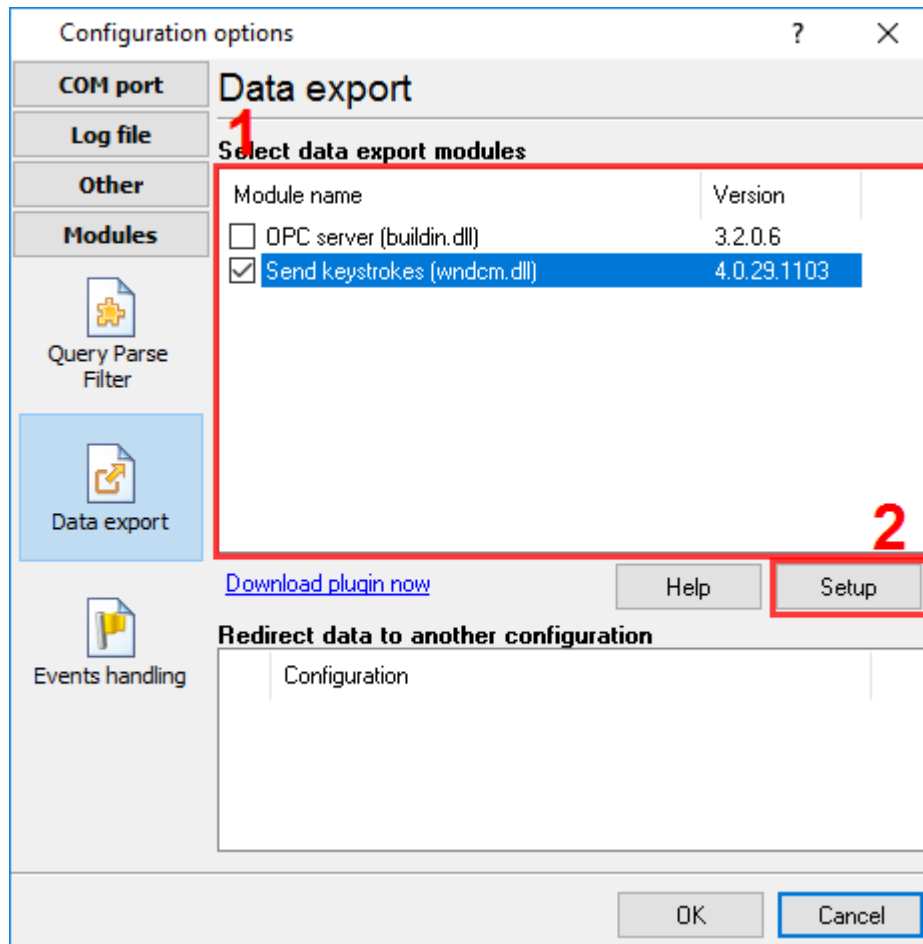


Fig.1. Example of installed module

4 Glossary

Main program – the main executable of the application. For example: Advanced Serial Data Logger and asdlog.exe. It allows creating several configuration. Each configuration may use many plugins.

Plug-in - the additional plugin module for the main program. The plugin module extend the functionality of the main program.

Parser – the plugin module that processes the data flow, singling out data packets from it, and then variables from data packets. These variables are used in data export modules after that.

Core - see "Main program".

5 User Manual

The plugin configuration is simple (fig. 1). You should define one or more items in the list on the left side.

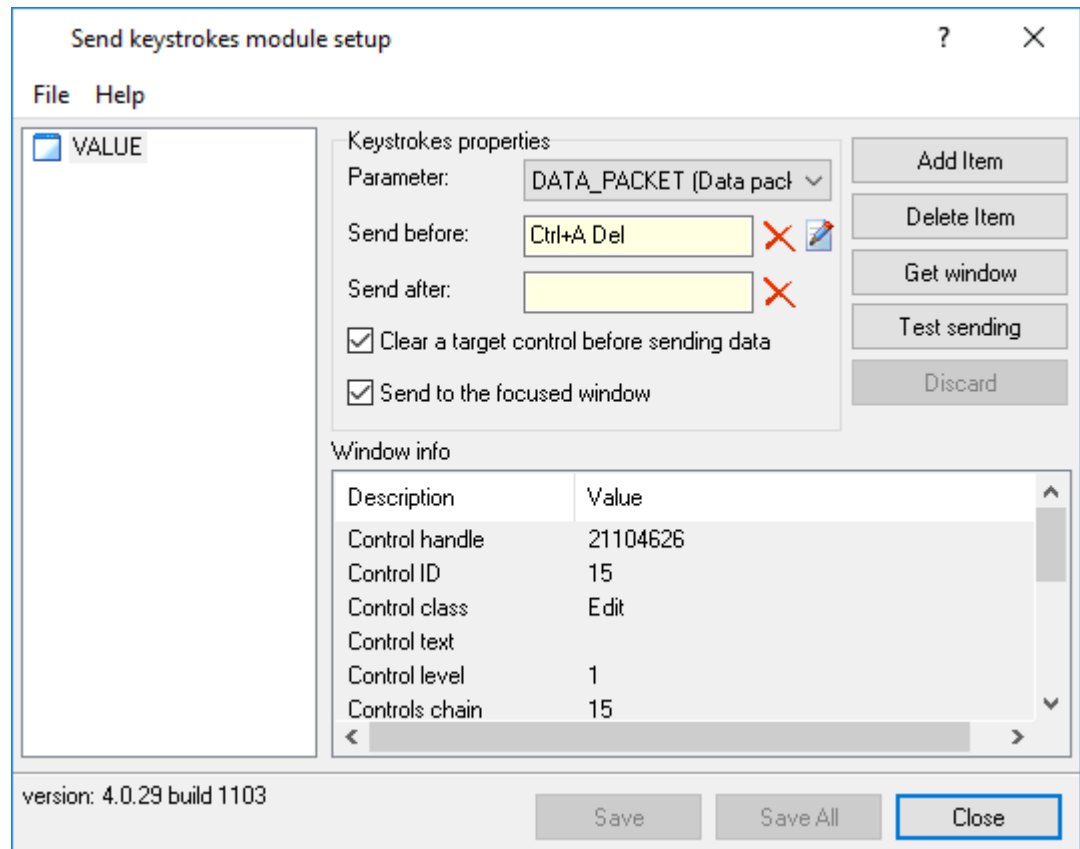


Fig.1 Configuration window

Adding an item

Click the "Add item" button, and specify any name in the list. Then you should specify the following configuration parameters.

- **Parameter name** - you may select the parser variable here. The plugin interprets the content of that variable as a string of characters and converts it to keystrokes.
- **Send before** - you may define any key sequence that the plugin sends before the main content.
- **Send after** - optional trailing key sequence.
- **Clear a target control before sending data** - if you select this option, the plugin clears all text in the target edit control.

- **Send to the focused window** - if you select this option, the plugin ignores the target window chosen, and always sends data to the topmost and focused window and edit field.
- **Window info** - contains information about the selected target window. This info appears after clicking the "Get windows" button and selecting any opened window on your desktop.

When editing is done, click the "Save" button.

To rename the added item, click the right mouse button, and select "Rename item" from the popup menu.

Capturing a target window

You may need to select a target window for your key sequences. You should choose an item from the list and click the "Get window" button. When you move the mouse cursor over your desktop, the plugin draws a red frame around windows that can be selected. Then you should press the "Ctrl" key and click over the window. The information about the window will be added to the "Window info" list.

Removing an item

To remove an item from the list, you should select it and click the "Delete item" button.

Discarding changes

If you did unwanted changes, you might cancel it using the "Discard" button.

Saving changes

You should click the "Save" button before closing the configuration window. Otherwise, you will lose all the new settings.

Test sending

After the window was captured with the help of the "Get window" button, you may test sending by clicking the "Test sending" button. The plugin tries to send the "Test data" string to the configured target window.

Loading and saving settings to a file

The "File" menu allows you to save your configuration to a text file and restore it on another computer, or create a backup of the current configuration.

6 Troubles?

6.1 Possible problems

No data for publication/exporting – no data is passed for exporting. Solution: configure the parser, make sure that one or more variables are declared in the parser.

Error on binding variable with name %s [%s] – the error usually occurs if data does not correspond to the specified format. For example, the date and time format does not correspond to the data.

Unable to disconnect from the database [%s] and **Unable to connect to a database [%s]** – it is impossible to connect/disconnect to/from the database. You should check the parameters of the database connection. The analysis of the additional information will help you locate the error.

Database access error [%s]. Stop operations with the database? – the message appears if an error occurs during an attempt to execute an SQL query if the second variant of reacting to errors is selected. The message implies a "Yes" or "No" answer. The analysis of the additional information will help you locate the error.

Unable to verify your SQL script [%s] – the message appears when an attempt to analyze your SQL query fails. Check if the syntax of your SQL query is correct.

Tested successfully – the message appears if your database connection is successfully tested. It requires no additional actions.

Database isn't used – the message appears if the module is temporarily disabled (the "Temporarily disabled" check box is selected) or the database name field is empty. Check the connection parameters.

Database isn't selected - the message appears if the database type is not selected. Check the connection parameters.

Database: %s – %s contains the database name. The message appears if the database connection is successful. Usually, you see it when you call the module for the first time. It requires no additional actions.

Invalid data block length (columns=%d,length=%d) – an internal application error. It means that the data sent by the parser is in an invalid format. Perhaps, you are using the module incompatible with the version of the Advanced Serial Data Logger kernel. Update the versions of both the kernel and the module.

The time of connection is not due yet (%d,%d) – the message appears during an attempt to connect to the database after the connection to it has been lost and the "Reconnect after" option is enabled. No additional actions are required.

Invalid procedure call. Bad arguments – an attempt to call the module using invalid parameters. Perhaps, you are using the module incompatible with the version of the Advanced Serial Data Logger kernel. Update the versions of both the kernel and the module.

Writing to the database is complete - the message appears if your queue of SQL queries is successfully executed. It requires no additional actions.

Writing to the database is complete with errors – the message appears if the executing your queue of SQL queries was interrupted by an error. It requires no additional actions.

Your SQL is empty. Please, specify some SQL text first – the message appears if you do not enter the text for your SQL query. Check if the options on the "SQL queue" tab are configured correctly.

Invalid temporary path – the path to the temporary file specified by you does not exist. Enter a new path in the "Temporary folder" field on the "Errors handling" tab.

%s, %d – will be replaced by additional information.